

Multisensor Series

Detailed Coverage in Multiple Directions From a Single Install Point



Overview

Verkada's Multisensor Series offers detailed, expansive coverage in multiple directions from a single install point, minimizing installation overhead and port usage. These hybrid cloud cameras offer independently adjustable image sensors and feature durable aluminum housings for protection against tampering and weather extremes. The Multisensor Series has standard features like onboard storage and processing for reduced bandwidth consumption, encryption at rest and in transit for enhanced data protection, and redundant cloud backup and unlimited cloud-based archiving of footage.

Verkada offers two types of multisensor cameras: two-camera multisensors and four-camera multisensors. Two-camera multisensors are optimal for bidirectional monitoring of key hallways, warehouse aisles, and wide entryways, delivering undistorted 180° coverage while minimizing blind spots directly beneath the camera. Four-camera multisensors provide complete 360° coverage, perfect for hallway intersections, open floor spaces, and exterior building corners.

Multisensor cameras offer either 5MP or 4K image resolution and utilize powerful IR LEDs for clear picture quality in a wide variety of lighting conditions. Each image sensor leverages an advanced varifocal lens with motorized zoom for optimal viewing and detailed people and vehicle capture at a distance. 5MP models deliver clear overview coverage and are ideal for large areas that see moderate traffic or for deployments at scale. 4K models offer highly-detailed coverage and optimal analytics performance at longer distances, ideal for high-traffic areas, key entrances and exits, or wide areas with valuable assets.

All models feature powerful onboard Amabarella processors, enabling Verkada's advanced people and vehicle analytics. Organizations can quickly filter for people and vehicles based on a variety of attributes like clothing color, gender appearance, and facial matches, as well as vehicle type and color. Verkada's [AI-powered search](#) can also be used to find relevant footage and establish alerts based on freeform text prompts.

Multisensor cameras streamline the process of deploying enterprise-grade coverage at scale, offering a wide field of view while only requiring a single cable run and switch port. Each device is constructed with easy and efficient installation top-of-mind. They are powered by power over ethernet (PoE) and require no additional setup, downloads, or configuration.

Key features

Enterprise-grade performance

- High-resolution progressive CMOS image sensors with up to 4K resolution
- Dedicated system-on-a-chip for an enhanced streaming experience
- Advanced edge processing for motion, people, vehicle, and AI analytics

Hybrid cloud architecture

- Onboard storage and processing for reduced bandwidth consumption and coverage at scale
- 30 - 365 days (256GB - 8TB) of onboard storage
- Redundant cloud backup and unlimited cloud-based archiving of footage

Plug-and-play installation

- No additional setup, downloads, or configuration required
- Automatic firmware updates
- LED install status light indicator
- Easily enable audio and advanced analytics

Verkada Hybrid Cloud Benefits Overview



No NVR or DVRs

Enterprise-grade onboard storage saves up to 365 days of continuous video¹

Easy to scale

Bandwidth friendly and supports thousands of globally-distributed sites

Centralized management

Modern platform enables secure remote access on any supported browser or device

The Reliability of Onboard Storage, With the Accessibility and Scalability of the Cloud

Lightweight, hassle-free installation

- No NVRs, DVRs, or servers—just a PoE connection
- Cameras come online and configure in minutes without 3rd party plugins, thick clients, or downloads
- No additional software or complexities like port forwarding

Easy to use

- Intuitive UI for streamlined investigations and quick incident resolution
- Provision user accounts to access footage and features without additional training
- Find, download, and share footage from any supported browser or device

Predictable total cost of ownership

- Hardware includes a 10-year warranty²
- New software features are pushed over-the-air, without any additional cost

Scalable across sites

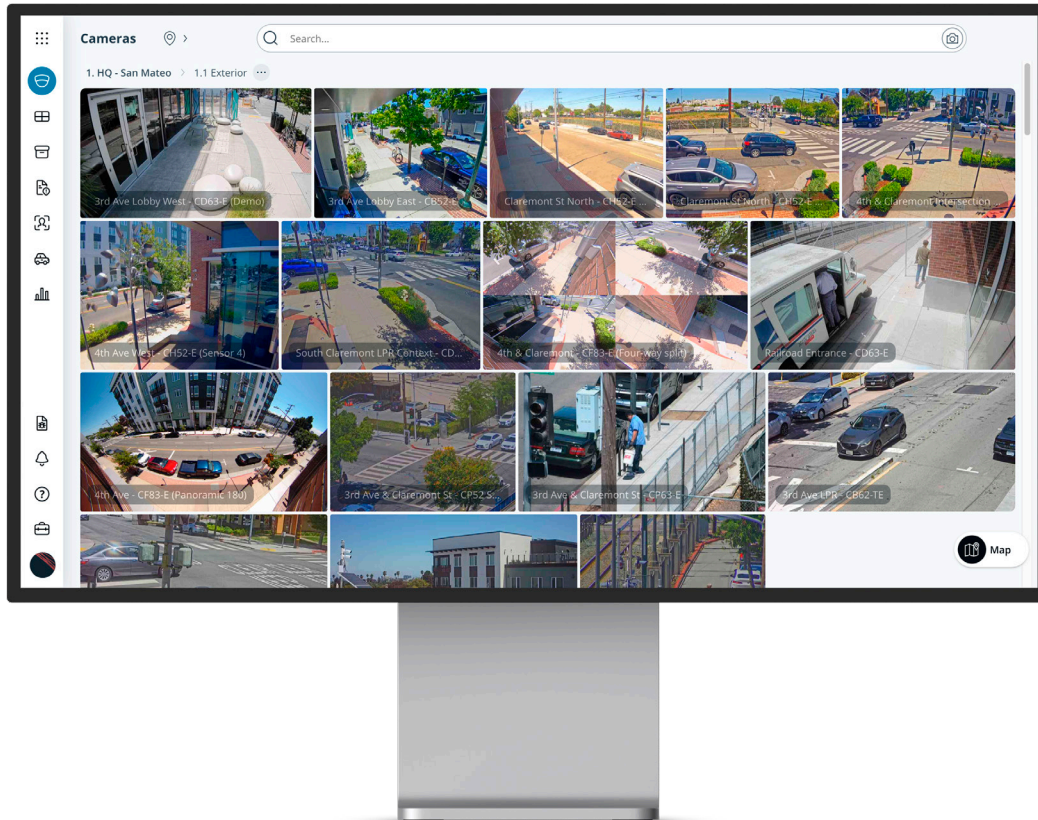
- Onboard storage and processing for reduced bandwidth consumption
- Cloud-based management platform centralizes globally-distributed devices
- Automatic firmware updates keep systems secure, eliminating the need for ongoing maintenance

1. All our cameras record in "adaptive quality," capturing both standard and high quality streams. Standard quality (SQ) video is stored up to the amount of retention specified by the customer. The amount of high quality video stored on the camera will depend on the amount of motion detected by the camera over time. To learn more, visit our website: <https://docs.verkada.com/docs/adaptive-quality-recording-whitepaper.pdf>

2. The CD22, CD22-E, and all PTZ cameras come with a 5-year warranty.



Verkada Command: Centralized, Cloud-Based Management for Distributed Deployments



Command, Verkada's cloud-based management software, centralizes management of Verkada devices across globally-distributed sites. Within Command, users can provision new cameras, create and organize sites, manage device settings, access live and historical footage, manage users, and leverage advanced analytics.

Manage from anywhere

- Remotely access footage and manage devices from any supported browser or device
- Leverage the Command mobile app for visibility on the go

Quickly detect and respond to threats

- Stay informed with customizable, intelligent alerts
- Filter people using attribute search and create person of interest (POI) profiles for specific subjects
- Search and filter to find vehicles and license plates of interest

Scale with simplicity

- Add more devices and sites without complicating the user experience
- Leverage granular roles and permissions to manage users at scale
- SAML-based integration with single sign-on (SSO) solutions

Streamline incident management

- Accelerate investigations with intelligent people, face, and vehicle detection
- Consolidate relevant footage to easily review and share with internal and external stakeholders

Keep data secure

- [Enterprise-controlled encryption](#) provides robust data protection, security, and control
- Stay secure with data encrypted in transit and at rest¹
- Receive automatic firmware updates to stay a step ahead of emerging threats

Archive and share over the cloud

- Command licenses include unlimited cloud archiving and 30-days of cloud backup
- Easily export any footage in MP4 format and allow recipients to verify its authenticity
- Share live links and historical footage with first responders

1. Data on device is encrypted at rest using AES-128. Data in the cloud is encrypted at rest using AES-256. Data in transit to the cloud is encrypted using TLS 1.2 or greater.



Multisensor model comparison

✓ Supported

X Not Supported

	CY53-E >	CY63-E >	CH52-E >	CH53-E >	CH63-E >
Hardware Capability Highlights					
Resolution	2 x 5MP	2 x 4K	4 x 5MP	4 x 5MP	4 x 4K
IR Range	30m / 98ft	30m / 98ft	30m / 98ft	30m / 98ft	30m / 98ft
Optical Zoom	✓	✓	✓	✓	✓
Audio Support	✓	✓	X	✓	✓
Rating	IK10 & IP66/67	IK10 & IP66/67	IK10 & IP66	IK10 & IP66/67	IK10 & IP66/67
Days of Onboard Retention	30 - 365	30 - 120	30 - 365	30 - 365	30 - 120
Software Capability Highlights					
People Detection (Motion search, trajectory analysis)	✓	✓	✓	✓	✓
People Analytics (People search, attribute search, face search)	✓	✓	✓	✓	✓
Vehicle Detection (Motion search, trajectory analysis)	✓	✓	✓	✓	✓
Vehicle Analytics (Vehicle search, attribute search)	✓	✓	✓	✓	✓
AI-powered search	✓	✓	✓	✓	✓
AI-powered alerts	✓	✓	✓	✓	✓
Occupancy Trends	✓	✓	✓	✓	✓
Encryption At Rest & In Transit ¹	✓	✓	✓	✓	✓
Enterprise Controlled Encryption	✓	✓	✓	✓	✓
Warranty & Pricing					
Warranty	10 years	10 years	10 years	10 years	10 years
Starting Price (MSRP)	\$2,199	\$2,799	\$3,599	\$3,399	\$4,199

1. Data on device is encrypted at rest using AES-128. Data in the cloud is encrypted at rest using AES-256. Data in transit to the cloud is encrypted using TLS 1.2 or greater.



Ordering Information

Two-Camera Multisensor Series pricing

Model Number	MP ¹	WDR	Lens	IR Range	Onboard Storage	Maximum SQ Onboard Retention ¹	People/ Vehicle Analytics	Cost (MSRP) ^{USD}
CY53-512E-HW	2 x 5MP	✓	Zoom	30m / 98ft	512GB	30 Days	✓	\$2,199
CY53-1TBE-HW	2 x 5MP	✓	Zoom	30m / 98ft	1TB	60 Days	✓	\$2,999
CY53-1P5TBE-HW	2 x 5MP	✓	Zoom	30m / 98ft	1.5TB	90 Days	✓	\$3,799
CY53-2TBE-HW	2 x 5MP	✓	Zoom	30m / 98ft	2TB	120 Days	✓	\$4,599
CY53-4TBE-HW	2 x 5MP	✓	Zoom	30m / 98ft	4TB	365 Days	✓	\$7,199
CY63-1TBE-HW	2 x 4K	✓	Zoom	30m / 98ft	1TB	30 Days	✓	\$2,799
CY63-2TBE-HW	2 x 4K	✓	Zoom	30m / 98ft	2TB	60 Days	✓	\$4,099
CY63-3TBE-HW	2 x 4K	✓	Zoom	30m / 98ft	3TB	90 Days	✓	\$5,399
CY63-4TBE-HW	2 x 4K	✓	Zoom	30m / 98ft	4TB	120 Days	✓	\$6,699

1. All our cameras record in "adaptive quality," capturing both standard and high quality streams. Standard quality (SQ) video is stored up to the amount of retention specified by the customer. The amount of high quality video stored on the camera will depend on the amount of motion detected by the camera over time. To learn more, visit our website: <https://docs.verkada.com/docs/adaptive-quality-recording-whitepaper.pdf>



Ordering Information

Four-Camera Multisensor Series pricing²

Model Number	MP ¹	WDR	Lens	IR Range	Onboard Storage	Maximum SQ Onboard Retention ¹	People/ Vehicle Analytics	Cost (MSRP) ^{USD}
CH52-1TBE-HW	4 x 5MP	✓	Zoom	30m / 98ft	1TB	30 Days	✓	\$3,599
CH52-2TBE-HW	4 x 5MP	✓	Zoom	30m / 98ft	2TB	60 Days	✓	\$4,899
CH52-4TBE-HW	4 x 5MP	✓	Zoom	30m / 98ft	4TB	120 Days	✓	\$7,499
CH52-8TBE-HW	4 x 5MP	✓	Zoom	30m / 98ft	8TB	365 Days	✓	\$12,699
CH53-1TBE-HW	4 x 5MP	✓	Zoom	30m / 98ft	1TB	30 Days	✓	\$3,399
CH53-2TBE-HW	4 x 5MP	✓	Zoom	30m / 98ft	2TB	60 Days	✓	\$4,699
CH53-3TBE-HW	4 x 5MP	✓	Zoom	30m / 98ft	3TB	90 Days	✓	\$5,999
CH53-4TBE-HW	4 x 5MP	✓	Zoom	30m / 98ft	4TB	120 Days	✓	\$7,299
CH53-8TBE-HW	4 x 5MP	✓	Zoom	30m / 98ft	8TB	365 Days	✓	\$12,499
CH63-2TBE-HW	4 x 4K	✓	Zoom	30m / 98ft	2TB	30 Days	✓	\$4,199
CH63-4TBE-HW	4 x 4K	✓	Zoom	30m / 98ft	4TB	60 Days	✓	\$6,799
CH63-6TBE-HW	4 x 4K	✓	Zoom	30m / 98ft	6TB	90 Days	✓	\$9,399
CH63-8TBE-HW	4 x 4K	✓	Zoom	30m / 98ft	8TB	120 Days	✓	\$12,099

1. All our cameras record in "adaptive quality," capturing both standard and high quality streams. Standard quality (SQ) video is stored up to the amount of retention specified by the customer. The amount of high quality video stored on the camera will depend on the amount of motion detected by the camera over time. To learn more, visit our website: <https://docs.verkada.com/docs/adaptive-quality-recording-whitepaper.pdf>

2. Certain cameras are also available in FIPS-validated models. See <https://docs.verkada.com/docs/FIPS-validated-series.pdf> for details.



Ordering Information

Video Security Cloud License pricing (New/Capacity Increase)

Model Number	Description	Cost (MSRP) USD
LIC-CAM-MLT2-1Y-CAP	1-Year Two-Camera Multisensor License, Capacity Increase	\$349
LIC-CAM-MLT2-3Y-CAP	3-Year Two-Camera Multisensor License, Capacity Increase	\$999
LIC-CAM-MLT2-5Y-CAP	5-Year Two-Camera Multisensor License, Capacity Increase	\$1,599
LIC-CAM-MLT2-10Y-CAP	10-Year Two-Camera Multisensor License, Capacity Increase	\$3,199
LIC-CAM-MLT4-1Y-CAP	1-Year Four-Camera Multisensor License, Capacity Increase	\$599
LIC-CAM-MLT4-3Y-CAP	3-Year Four-Camera Multisensor License, Capacity Increase	\$1,649
LIC-CAM-MLT4-5Y-CAP	5-Year Four-Camera Multisensor License, Capacity Increase	\$2,699
LIC-CAM-MLT4-10Y-CAP	10-Year Four-Camera Multisensor License, Capacity Increase	\$5,399

Video Security Cloud License pricing (Renewal)

Model Number	Description	Cost (MSRP) USD
LIC-CAM-MLT2-1Y-RNW	1-Year Two-Camera Multisensor License, Renewal	\$349
LIC-CAM-MLT2-3Y-RNW	3-Year Two-Camera Multisensor License, Renewal	\$999
LIC-CAM-MLT2-5Y-RNW	5-Year Two-Camera Multisensor License, Renewal	\$1,599
LIC-CAM-MLT2-10Y-RNW	10-Year Two-Camera Multisensor License, Renewal	\$3,199
LIC-CAM-MLT4-1Y-RNW	1-Year Four-Camera Multisensor License, Renewal	\$599
LIC-CAM-MLT4-3Y-RNW	3-Year Four-Camera Multisensor License, Renewal	\$1,649
LIC-CAM-MLT4-5Y-RNW	5-Year Four-Camera Multisensor License, Renewal	\$2,699
LIC-CAM-MLT4-10Y-RNW	10-Year Four-Camera Multisensor License, Renewal	\$5,399



Ordering Information

Extended Cloud Storage pricing (New/Capacity Increase)

Model Number	Description	Cost (MSRP) USD
LIC-CLD-30-1Y-CAP	1-Year Cloud Storage License - 30 Day, Capacity Increase	\$99
LIC-CLD-30-3Y-CAP	3-Year Cloud Storage License - 30 Day, Capacity Increase	\$299
LIC-CLD-30-5Y-CAP	5-Year Cloud Storage License - 30 Day, Capacity Increase	\$499
LIC-CLD-30-10Y-CAP	10-Year Cloud Storage License - 30 Day, Capacity Increase	\$999

Extended Cloud Storage pricing (Renewal)

Model Number	Description	Cost (MSRP) USD
LIC-CLD-30-1Y-RNW	1-Year Cloud Storage License - 30 Day, Renewal	\$99
LIC-CLD-30-3Y-RNW	3-Year Cloud Storage License - 30 Day, Renewal	\$299
LIC-CLD-30-5Y-RNW	5-Year Cloud Storage License - 30 Day, Renewal	\$499
LIC-CLD-30-10Y-RNW	10-Year Cloud Storage License - 30 Day, Renewal	\$999



Ordering Information

Accessories pricing

Model Number	Description	Cost (MSRP) USD
ACC-MNT-ARM-1	Arm Mount	\$99
ACC-MNT-CORNER-1	Corner Mount	\$199
ACC-MNT-HPEND-1	Four-Camera Multisensor Pendant Cap Mount ³	\$139
ACC-MNT-PEND-1	Pendant Cap Mount ⁴	\$69
ACC-MNT-POLE-1	Pole Mount	\$209
ACC-MNT-XLARM-1	Large Arm Mount	\$159
ACC-MNT-YJBOX-1	Two-Camera Multisensor Junction Box Mount	\$149
ACC-MNT-YPEND-1	Two-Camera Multisensor Pendant Cap Mount	\$109
ACC-POE-90W-AU	90W PoE++ (802.3bt Type 4) Injector, GigE, Indoor, Australia Type I Plug	\$169
ACC-POE-90W-EU	90W PoE++ (802.3bt Type 4) Injector, GigE, Indoor, Europe Type F Plug	\$169
ACC-POE-90W-NA	90W PoE++ (802.3bt Type 4) Injector, GigE, Indoor, North America Type B Plug	\$169
ACC-POE-90W-UK	90W PoE++ (802.3bt Type 4) Injector, GigE, Indoor, United Kingdom Type G Plug	\$169
INJ-POE-PLUS	PoE Plus (802.3at) Injector, GigE	\$129

3. All The ACC-MNT-HPEND-1 should be used when deploying the CH53-E and CH63-E. This mount is not compatible with the CH52-E.

4. The ACC-MNT-PEND-1 should be used when deploying the CH52-E. This mount is not compatible with the CH53-E or CH63-E.



Ordering Information

Viewing Station pricing

Model Number	Description	Cost (MSRP) USD
VX52-HW	VX52 Viewing Station	\$499

Viewing Station License pricing (New/Capacity Increase)

Model Number	Description	Cost (MSRP) USD
LIC-VX-1Y-CAP	1-Year Viewing Station License, Capacity Increase	\$499
LIC-VX-3Y-CAP	3-Year Viewing Station License, Capacity Increase	\$1,299
LIC-VX-5Y-CAP	5-Year Viewing Station License, Capacity Increase	\$1,999
LIC-VX-10Y-CAP	10-Year Viewing Station License, Capacity Increase	\$3,999

Viewing Station License pricing (Renewal)

Model Number	Description	Cost (MSRP) USD
LIC-VX-1Y-RNW	1-Year Viewing Station License, Renewal	\$499
LIC-VX-3Y-RNW	3-Year Viewing Station License, Renewal	\$1,299
LIC-VX-5Y-RNW	5-Year Viewing Station License, Renewal	\$1,999
LIC-VX-10Y-RNW	10-Year Viewing Station License, Renewal	\$3,999