

## Government-Grade Camera Series



### Overview

Verkada's government-grade cameras include FIPS 140-validated encryption and are TAA and FY2019 NDAA compliant—essential compliance criteria for government-grade deployments. These models are ideal for use with Command for GovCloud, Verkada's FedRAMP® Moderate Authorized environment. These devices offer durable, vandal-resistant designs, advanced computer vision features, and require no additional setup, downloads or configuration.

Powerful onboard Ambarella processors enable Verkada's advanced people and vehicle analytics. Organizations can quickly search based on a variety of attributes like clothing color, gender appearance, and facial matches, as well as vehicle type, color, make, and model. Verkada's [AI-powered search](#) can also be used to search for specific footage and create alerts based on freeform text prompts. Government-grade bullet cameras also offer license plate recognition capabilities.

Government-grade cameras are compatible with the standard Verkada Command platform, as well as Command hosted in AWS GovCloud (exclusively available to US government organizations<sup>1</sup>). With Verkada's robust offering of government-grade cameras, organizations can benefit from a wide breadth of camera models and form factors designed for a variety of government environments.

### Key features

#### Government-grade security

- Meets the FIPS 140 standard, as validated by NIST
- TAA and FY2019 NDAA compliant

#### Enterprise-grade performance

- High-resolution progressive CMOS image sensors with up to 4K resolution
- Dedicated system-on-a-chip for an enhanced streaming experience
- Advanced edge processing for motion, people, vehicle, and AI analytics

#### Hybrid cloud architecture

- Onboard storage and processing for reduced bandwidth consumption and coverage at scale
- 30 - 365 days (256GB - 3TB) of onboard storage
- Redundant cloud backup and unlimited cloud-based archiving of footage

1. Federal, state, local, or tribal organizations, research institutions, federal contractors, and government contractors.

## Verkada hybrid cloud benefits Overview



### No NVR or DVRs

Enterprise-grade onboard storage saves up to 365 days of continuous video<sup>1</sup>

### Easy to scale

Bandwidth friendly and supports thousands of globally-distributed sites

### Centralized management

Modern platform enables secure remote access on any supported browser or device

## The reliability of onboard storage, with the accessibility and scalability of the cloud

### Lightweight, hassle-free installation

- No NVRs, DVRs, or servers—just a PoE connection
- Cameras come online and configure in minutes without 3rd party plugins, thick clients, or downloads
- No additional software or complexities like port forwarding

### Easy to use

- Intuitive UI for streamlined investigations and quick incident resolution
- Provision user accounts to access footage and features without additional training
- Find, download, and share footage from any supported browser or device

### Predictable total cost of ownership

- Hardware includes a 10-year warranty<sup>2</sup>
- New software features are pushed over-the-air, without any additional cost

### Scalable across sites

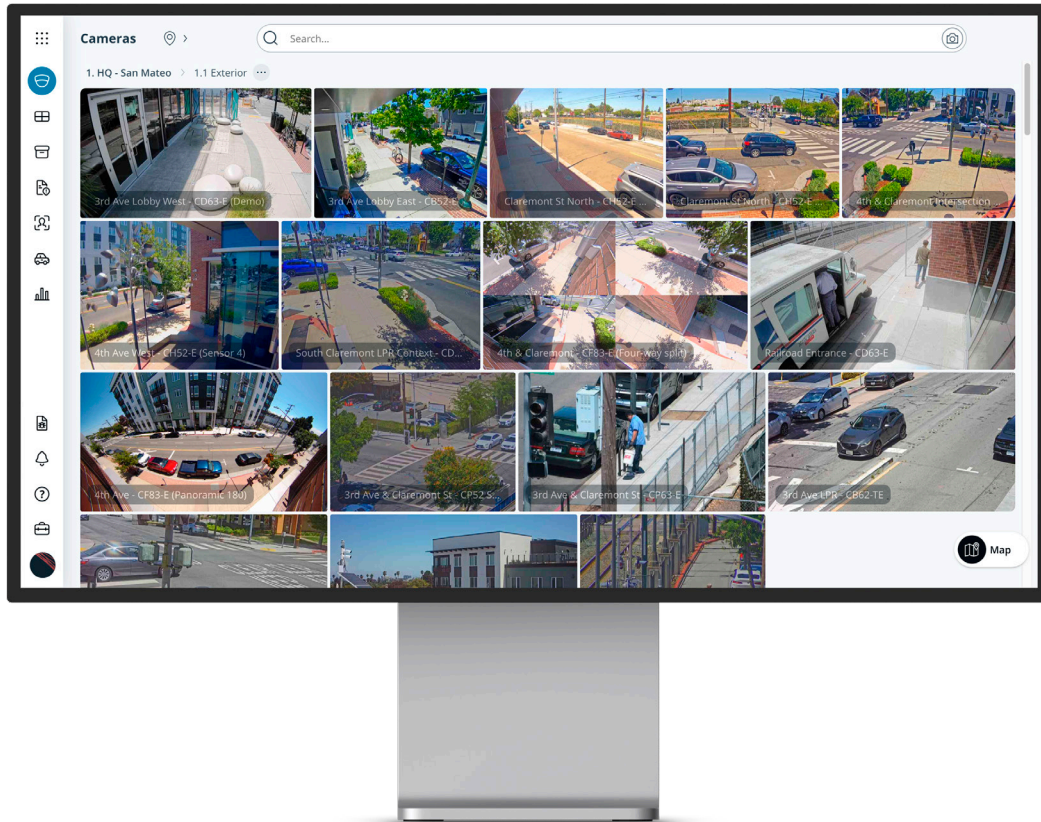
- Onboard storage and processing for reduced bandwidth consumption
- Cloud-based management platform centralizes globally-distributed devices
- Automatic firmware updates keep systems secure, eliminating the need for ongoing maintenance

1. All our cameras record in “adaptive quality,” capturing both standard and high quality streams. Standard quality (SQ) video is stored up to the amount of retention specified by the customer. The amount of high quality video stored on the camera will depend on the amount of motion detected by the camera over time. To learn more, visit our website: <https://docs.verkada.com/docs/adaptive-quality-recording-whitepaper.pdf>.

2. The CD22, CD22-E, and all PTZ cameras come with a 5-year warranty.



# Verkada Command: centralized, cloud-based management for distributed deployments



Command, Verkada’s cloud-based management software, centralizes management of Verkada devices across globally-distributed sites. Within Command, users can provision new cameras, create and organize sites, manage device settings, access live and historical footage, manage users, and leverage advanced analytics.

### Manage from anywhere

- Remotely access footage and manage devices from any supported browser or device
- Leverage the Command mobile app for visibility on the go

### Quickly detect and respond to threats

- Stay informed with customizable, intelligent alerts
- Filter people using attribute search and create person of interest (POI) profiles for specific subjects
- Search and filter to find vehicles and license plates of interest

### Scale with simplicity

- Add more devices and sites without complicating the user experience
- Leverage granular roles and permissions to manage users at scale
- SAML-based integration with single sign-on (SSO) solutions

### Streamline incident management

- Accelerate investigations with intelligent people, face, and vehicle detection
- Consolidate relevant footage to easily review and share with internal and external stakeholders

### Keep data secure

- [Enterprise-controlled encryption](#) provides robust data protection, security, and control
- Stay secure with data encrypted in transit and at rest<sup>1</sup>
- Receive automatic firmware updates to stay a step ahead of emerging threats

### Archive and share over the cloud

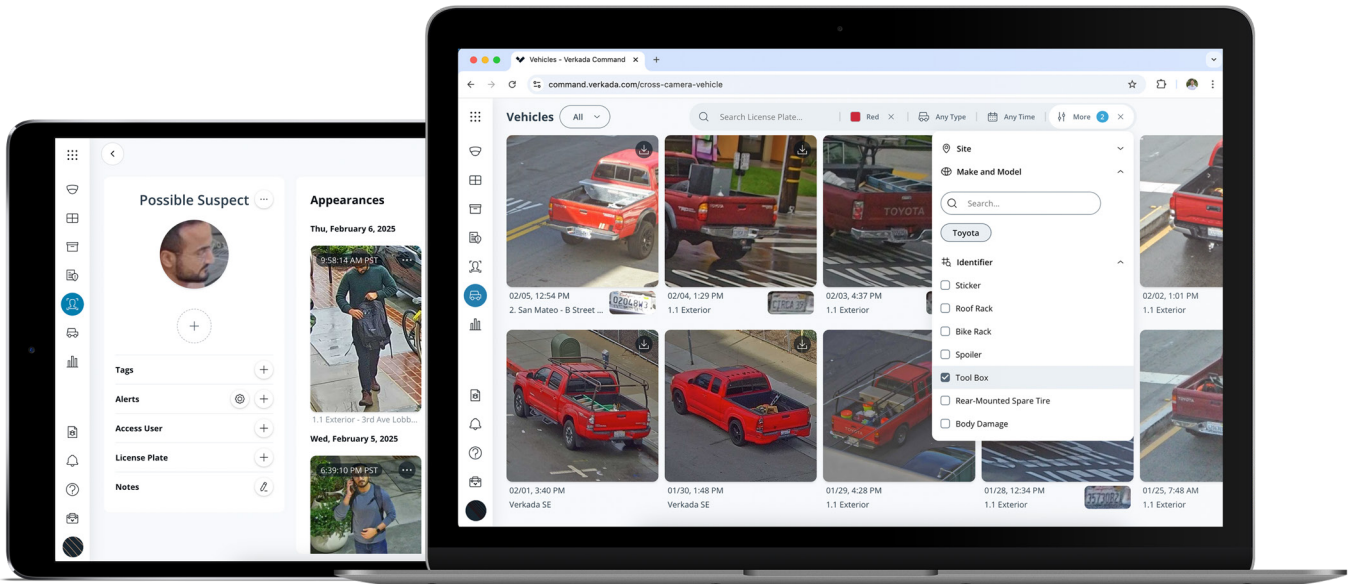
- Command licenses include unlimited cloud archiving and 30-days of cloud backup
- Easily export any footage in MP4 format and allow recipients to verify its authenticity
- Share live links and historical footage with first responders

1. Data on device is encrypted at rest using AES-128. Data in the cloud is encrypted at rest using AES-256. Data in transit to the cloud is encrypted using TLS 1.2 or greater.



## Verkada's People and Vehicle Analytics

# Simplify Investigations with Intelligent People, Face, and Vehicle Detection



People and Vehicle Analytics combine intelligent edge-based video processing with computer vision to give users high-quality, cloud-based images of all individuals and vehicles identified across one's fleet. Using these analytics, security teams can filter for highly-detailed and specific attributes of people or vehicles.

## Bring Intelligence to Investigations

### Face search

- Quickly surface all appearances of a possible suspect by searching across all cameras for facial matches in a privacy-sensitive way<sup>1</sup>

### Person and License Plate of Interest notifications

- Create a Person of Interest using an uploaded photo or existing face in Command
- Set up proactive SMS, email, or mobile app notifications for when a matching Person of Interest is detected across one's cameras
- Use a freeform search bar to find matching license plates of interest. Further filter for potential license plate matches by U.S. state<sup>2</sup>
- Link License Plates of Interest to a Person of Interest to create a comprehensive profile of suspects in question

### Person and vehicle history

- Browse through high-resolution snapshots of people and vehicles detected
- Click into a snapshot of a suspect and use [history player search](#) to find all other instances of the individual in question throughout one's fleet

### Attribute filters

- Search for people and vehicles using a detailed list of prescribed attribute filters
- Use the vehicle search page to filter footage by vehicle color, type, virtually any make and model, and unique identifiers like noticeable body damage
- Use the people search page to filter footage by clothing color, gender appearance, and the presence of hard hats, safety vests, and other PPE – ideal for ensuring workplace safety

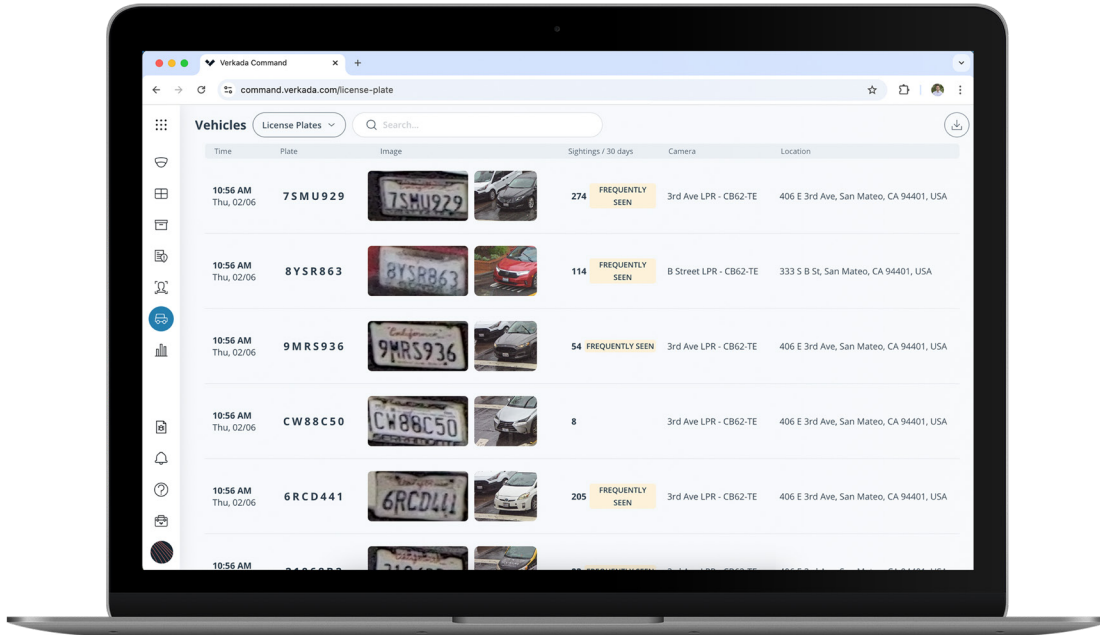
1. At Verkada, we intentionally do not train our People Analytics models to identify sensitive characteristics such as race, ethnicity, age, or other demographic information. We also set administrative guardrails around the use of People Analytics: it is disabled by default and after opting in, only users authorized by an Organization's admin may enable or view analytics on a given device.

2. License plate recognition is only supported on Verkada's bullet cameras.



## License Plate Recognition

# Enhanced Vehicle Insights with Verkada’s Powerful LPR Camera Solution



Verkada's License Plate Recognition (LPR) solution allows organizations to monitor license plates in real-time and streamline vehicle investigations. The solution uses Verkada's edge-based processing and computer vision technology to capture license plate images and provide users with a readable and searchable list of license plate numbers. These captures are connected to live or recorded video for added context.

## Automatic License Plate Detection

### Track fast-moving vehicles and broaden coverage

Capture license plate characters at speeds of up to 80 mph / 128 kph, cover up to three lanes of traffic and identify international or U.S. state-specific license plates – all with high precision and low latency<sup>1</sup>

### Conduct exhaustive vehicle investigations

Use LPR to reconstruct a map of a vehicles’ whereabouts and help security teams pinpoint vehicles of interest across expansive areas, like multiple city blocks

### Find license plates even with limited information

Verkada's LPR provides approximate license plate matches even if the inputted characters are incorrect or if the system is unable to detect all characters

### Receive custom License Plate of Interest Alerts

Send alerts via SMS, email, or mobile app to specific individuals or entire teams when designated license plates are detected across LPR-enabled cameras

1. For best results, install cameras as outlined in the [User Guide for License Plate Recognition](#).



## CD43-F

### Tech Specs

#### Camera features

<b>Image Sensor</b>	1/2.8" Progressive CMOS	<b>Shutter Speed</b>	1/30 sec. to 1/10,000 sec.
<b>Sensor Resolution<sup>1</sup></b>	5MP (2688 x 1944)	<b>Day/Night</b>	IR-cut filter for day and night function
<b>Lens Type</b>	Fixed	<b>IR Cut Filter</b>	Yes
<b>Focal Length</b>	3.2mm	<b>IR Range</b>	20m / 66ft
<b>Aperture</b>	F1.6	<b>Minimum Illumination</b>	0.009 lux @ F1.9 (Color) 0 lux with IR Illuminators on
<b>Iris</b>	Fixed	<b>Onboard Storage</b>	Capacity: From 256GB to 2TB Card: MicroSD, SDXC
<b>Field of View (after LDC<sup>2</sup>)</b>	Horizontal: 101° (84°) Vertical: 73° (66°) Diagonal: 130° (99°)	<b>CPU</b>	Ambarella CV75S88
<b>Sensor Movement</b>	Tilt: 60° Pan: 360° Rotation: 350°		

#### Standard video settings

<b>Compression</b>	H.265, H.264	<b>Historical Video Settings</b>	Adaptive quality <sup>1</sup>
<b>Frame Rate<sup>3</sup></b>	24fps	<b>Live Streaming Settings</b>	High quality (HQ): Up to 3,000 Kbps (default) Standard quality (SQ): Up to 600 Kbps

#### Standard audio settings

<b>Audio</b>	Supported	<b>Interface</b>	Built-in microphone
<b>Audio Capacity</b>	One-way audio	<b>Effective Range</b>	5m / 16ft

#### Power and network

<b>Power Input<sup>4</sup></b>	With IR: IEEE 802.3at Type 2 PoE+ Without IR: IEEE 802.3af Type 1 PoE Extended temperature range: N/A	<b>Connectivity</b>	RJ-45 cable connector for network/PoE connection; 10 / 100 / 1000 Mbps
<b>Power Consumption<sup>4</sup></b>	With IR: 37V-57V, 0.39A-0.29A, 16.8W Without IR: 37V-57V, 0.23A-0.15A, 8.5W Extended temperature range: N/A	<b>RTSP</b>	RTSP1.0 RFC 2326 Max concurrent streams: 2 Audio support: Yes

1. All our cameras record in "adaptive quality," capturing both standard (SQ) and high quality (HQ) streams. SQ video is stored up to the amount of retention specified by the customer. The amount of HQ video stored on the camera will depend on the amount of motion detected by the camera over time. To learn more, visit our website: <https://docs.verkada.com/docs/adaptive-quality-recording-whitepaper.pdf>

2. Lens Distortion Correction (LDC) crops the sensor field of view to deliver a rectified, undistorted output image.

3. Frame rate can be adjusted by support.

4. Extended temperature range includes operating temperatures below -10°C / 14°F and assumes IR will be enabled.



# CD43-F Tech Specs

## General

<b>Operating Temperature</b>	-10°C to 50°C / 14°F to 122°F	<b>LED Indicator</b>	System power, status indicator and debug indicator
<b>Humidity</b>	0 to 90%	<b>Warranty</b>	10 Years
<b>Certifications</b>	FCC, ICES, UKCA CE, RCM, VCCI, IK08 impact rating, Compliant to UL 2043, FIPS 140-2 validated, TAA compliant, FY2019 NDAA compliant	<b>Included Accessories</b>	Screw packs, mount plate with leveler, T10 security driver

## Mechanical

<b>Weight</b>	Camera: 951g / 33.55oz Mount plate: 193g / 6.81oz	<b>Body</b>	Aluminum, plastic dome trim
<b>Dimensions</b>	Ø: 155.0mm / 6.10in, H: 109.0mm / 4.29in with mount plate Ø: 155.0mm / 6.10in, H: 101.9mm / 4.01in without mount plate		

## Dimensions



## Software capabilities

<b>Alerts</b>	Camera status, motion detection, people detection, vehicle detection, person of interest detection, crowd detection, line-crossing detection, loitering detection, AI-powered alerts	<b>Streaming and Storage</b>	Cloud backup, configurable retention days, selectable storage location, low bandwidth mode, timelapse, RTSP
<b>People Analytics</b>	People search, attribute search, face search, occupancy trends, motion search, trajectory analysis, selective face blurring, AI-powered search	<b>Sharing and Privacy</b>	Live links, live face blur, privacy regions, audit log
<b>Vehicle Analytics</b>	Vehicle search, attribute search, motion search, trajectory analysis, occupancy trends, AI-powered search		



## CD53-F

### Tech Specs

#### Camera features

<b>Image Sensor</b>	1/2.8" Progressive CMOS	<b>Shutter Speed</b>	1/30 sec. to 1/10,000 sec.
<b>Sensor Resolution<sup>1</sup></b>	5MP (2688 x 1944)	<b>Day/Night</b>	IR-cut filter for day and night function
<b>Lens Type</b>	Varifocal; motorized zoom	<b>IR Cut Filter</b>	Yes
<b>Focal Length</b>	2.8-8mm	<b>IR Range</b>	30m / 98ft
<b>Aperture</b>	F1.3 - F2.4	<b>Minimum Illumination</b>	0.009 lux @ F1.9 (Color) 0 lux with IR Illuminators on
<b>Iris</b>	P-Iris	<b>Onboard Storage</b>	Capacity: From 256GB to 2TB Card: MicroSD, SDXC
<b>Field of View (after LDC<sup>2</sup>)</b>	Horizontal: 109° - 39° (91° - 36°) Vertical: 80° - 29° (71° - 28°) Diagonal: 140° - 48° (107° - 44°)	<b>CPU</b>	Ambarella CV75S88
<b>Sensor Movement</b>	Tilt: 60° Pan: 360° Rotation: 350°		

#### Standard video settings

<b>Compression</b>	H.265, H.264	<b>Historical Video Settings</b>	Adaptive quality <sup>1</sup>
<b>Frame Rate<sup>3</sup></b>	24fps	<b>Live Streaming Settings</b>	High quality (HQ): Up to 3,000 Kbps (default) Standard quality (SQ): Up to 600 Kbps

#### Standard audio settings

<b>Audio</b>	Supported	<b>Interface</b>	Built-in microphone
<b>Audio Capacity</b>	One-way audio	<b>Effective Range</b>	5m / 16ft

#### Power and network

<b>Power Input<sup>4</sup></b>	With IR: IEEE 802.3at Type 2 PoE+ Without IR: IEEE 802.3af Type 1 PoE Extended temperature range: N/A	<b>Connectivity</b>	RJ-45 cable connector for network/PoE connection; 10 / 100 / 1000 Mbps
<b>Power Consumption<sup>4</sup></b>	With IR: 37V-57V, 0.39A-0.29A, 16.8W Without IR: 37V-57V, 0.23A-0.15A, 8.5W Extended temperature range: N/A	<b>RTSP</b>	RTSP 1.0 RFC 2326 Max concurrent streams: 2 Audio support: Yes

1. All our cameras record in "adaptive quality," capturing both standard (SQ) and high quality (HQ) streams. SQ video is stored up to the amount of retention specified by the customer. The amount of HQ video stored on the camera will depend on the amount of motion detected by the camera over time. To learn more, visit our website: <https://docs.verkada.com/docs/adaptive-quality-recording-whitepaper.pdf>

2. Lens Distortion Correction (LDC) crops the sensor field of view to deliver a rectified, undistorted output image.

3. Frame rate can be adjusted by support.

4. Extended temperature range includes operating temperatures below -10°C / 14°F and assumes IR will be enabled.



# CD53-F Tech Specs

## General

<b>Operating Temperature</b>	-10°C to 50°C / 14°F to 122°F	<b>LED Indicator</b>	System power, status indicator, and debug indicator
<b>Humidity</b>	0 to 90%	<b>Warranty</b>	10 Years
<b>Certifications</b>	FCC, ICES, UKCA CE, RCM, VCCI, IK08 impact rating, Compliant to UL 2043, FIPS 140-2 validated, TAA compliant, FY2019 NDAA compliant	<b>Included Accessories</b>	Screw packs, mount plate with leveler, T10 security driver

## Mechanical

<b>Weight</b>	Camera: 963g / 33.97oz Mount plate: 193g / 6.81oz	<b>Body</b>	Aluminum, plastic dome trim
<b>Dimensions</b>	Ø: 155.0mm / 6.10in, H: 109.0mm / 4.29in with mount plate Ø: 155.0mm / 6.10in, H: 101.9mm / 4.01in without mount plate		

## Dimensions



## Software capabilities

<b>Alerts</b>	Camera status, motion detection, people detection, vehicle detection, person of interest detection, crowd detection, line-crossing detection, loitering detection, AI-powered alerts	<b>Streaming and Storage</b>	Cloud backup, configurable retention days, selectable storage location, low bandwidth mode, timelapse, RTSP
<b>People Analytics</b>	People search, attribute search, face search, occupancy trends, motion search, trajectory analysis, selective face blurring, AI-powered search	<b>Sharing and Privacy</b>	Live links, live face blur, privacy regions, audit log
<b>Vehicle Analytics</b>	Vehicle search, attribute search, motion search, trajectory analysis, occupancy trends, AI-powered search		



## CD63-F

### Tech Specs

#### Camera features

<b>Image Sensor</b>	1 / 1.2" Progressive CMOS	<b>Shutter Speed</b>	1 / 30 sec. to 1 / 10,000 sec.
<b>Sensor Resolution<sup>1</sup></b>	4K (3840 x 2160)	<b>Day/Night</b>	IR-cut filter for day and night function
<b>Lens Type</b>	Varifocal; motorized zoom	<b>IR Cut Filter</b>	Yes
<b>Focal Length</b>	5.9 - 13.3mm	<b>IR Range</b>	40m / 130ft
<b>Aperture</b>	F1.5 - F2.9	<b>Minimum Illumination</b>	0.009 lux @ F1.9 (Color) 0 lux with IR illuminators on
<b>Iris</b>	P-Iris	<b>Onboard Storage</b>	Capacity: From 512GB to 3TB Card: MicroSD, SDXC
<b>Field of View (after LDC<sup>2</sup>)</b>	Horizontal: 109° - 49° (102° - 47°) Vertical: 58° - 28° (58° - 27°) Diagonal: 113° - 55° (107° - 53°)	<b>CPU</b>	Ambarella CV72S66
<b>Sensor Movement</b>	Tilt: 65° Pan: 360° Rotation: 350°		

#### Standard video settings

<b>Compression</b>	H.265, H.264	<b>Historical Video Settings</b>	Adaptive quality <sup>1</sup>
<b>Frame Rate<sup>3</sup></b>	24fps	<b>Live Streaming Settings</b>	High quality (HQ): Up to 4,500 Kbps (default) Standard quality (SQ): Up to 600 Kbps

#### Standard audio settings

<b>Audio</b>	Supported	<b>Interface</b>	Built-in microphone
<b>Audio Capacity</b>	One-way audio	<b>Effective Range</b>	5m / 16ft

#### Power and network

<b>Power Input<sup>4</sup></b>	With IR: IEEE 802.3at Type 2 PoE+ Without IR: IEEE 802.3af Type 1 PoE Extended temperature range: N/A	<b>Connectivity</b>	RJ-45 cable connector for network/PoE connection; 10 / 100 / 1000 Mbps
<b>Power Consumption<sup>4</sup></b>	With IR: 43-57V, 0.48-0.36A, 20.4W Without IR: 43-57V, 0.20-0.27A, 11.3W Extended temperature range: N/A	<b>RTSP</b>	RTSP 1.0 RFC 2326 Max concurrent streams: 2 Audio support: Yes

1. All our cameras record in "adaptive quality," capturing both standard (SQ) and high quality (HQ) streams. SQ video is stored up to the amount of retention specified by the customer. The amount of HQ video stored on the camera will depend on the amount of motion detected by the camera over time. To learn more, visit our website: <https://docs.verkada.com/docs/adaptive-quality-recording-whitepaper.pdf>

2. Lens Distortion Correction (LDC) crops the sensor field of view to deliver a rectified, undistorted output image.

3. Frame rate can be adjusted by support.

4. Extended temperature range includes operating temperatures below -10°C / 14°F and assumes IR will be enabled.



# CD63-F Tech Specs

## General

<b>Operating Temperature</b>	-10°C to 50°C / 14°F to 122°F	<b>LED Indicator</b>	System power, status indicator, and debug indicator
<b>Humidity</b>	0 to 90%	<b>Warranty</b>	10 Years
<b>Certifications</b>	FCC, ICES, UKCA, CE, RCM, VCCI, NOM, KCC, IEC 62368-1, IK08 impact rating, Compliant to UL 2043	<b>Included Accessories</b>	Screw packs, mount plate with leveler, T10 security driver

## Mechanical

<b>Weight</b>	Camera: 1324g / 46.70oz Mount plate: 193g / 6.81oz	<b>Body</b>	Aluminum, plastic dome trim
<b>Dimensions</b>	Ø: 155.0mm / 6.10in, H: 111.4mm / 4.39in with mount plate Ø: 155.0mm / 6.10in, H: 104.4mm / 4.11in without mount plate		

## Dimensions



## Software capabilities

<b>Alerts</b>	Camera status, motion detection, people detection, vehicle detection, person of interest detection, crowd detection, line-crossing detection, loitering detection, AI-powered alerts	<b>Streaming and Storage</b>	Cloud backup, configurable retention days, selectable storage location, low bandwidth mode, timelapse, RTSP
<b>People Analytics</b>	People search, attribute search, face search, occupancy trends, motion search, trajectory analysis, selective face blurring, AI-powered search	<b>Sharing and Privacy</b>	Live links, live face blur, privacy regions, audit log
<b>Vehicle Analytics</b>	Vehicle search, attribute search, motion search, trajectory analysis, occupancy trends, AI-powered search		



## CD43-E-F

### Tech Specs

#### Camera features

<b>Image Sensor</b>	1/2.8" Progressive CMOS	<b>Shutter Speed</b>	1/30 sec. to 1/10,000 sec.
<b>Sensor Resolution<sup>1</sup></b>	5MP (2688 x 1944)	<b>Day/Night</b>	IR-cut filter for day and night function
<b>Lens Type</b>	Fixed	<b>IR Cut Filter</b>	Yes
<b>Focal Length</b>	3.2mm	<b>IR Range</b>	20m / 66ft
<b>Aperture</b>	F1.6	<b>Minimum Illumination</b>	0.009 lux @ F1.9 (Color) 0 lux with IR Illuminators on
<b>Iris</b>	Fixed	<b>Onboard Storage</b>	Capacity: From 256GB to 2TB Card: MicroSD, SDXC
<b>Field of View (after LDC<sup>2</sup>)</b>	Horizontal: 101° (84°) Vertical: 73° (66°) Diagonal: 130° (99°)	<b>CPU</b>	Ambarella CV75S88
<b>Sensor Movement</b>	Tilt: 60° Pan: 360° Rotation: 350°		

#### Standard video settings

<b>Compression</b>	H.265, H.264	<b>Historical Video Settings</b>	Adaptive quality <sup>1</sup>
<b>Frame Rate<sup>3</sup></b>	24fps	<b>Live Streaming Settings</b>	High quality (HQ): Up to 3,000 Kbps (default) Standard quality (SQ): Up to 600 Kbps

#### Standard audio settings

<b>Audio</b>	Supported	<b>Interface</b>	Built-in microphone
<b>Audio Capacity</b>	One-way audio	<b>Effective Range</b>	5m / 16ft

#### Power and network

<b>Power Input<sup>4</sup></b>	With IR: IEEE 802.3at Type 2 PoE+ Without IR: IEEE 802.3af Type 1 PoE Extended temperature range: IEEE 802.3at Type 2 PoE+	<b>Connectivity</b>	RJ-45 cable connector for network/PoE connection; 10 / 100 / 1000 Mbps
<b>Power Consumption<sup>4</sup></b>	With IR: 37V-57V, 0.39A-0.29A, 16.8W Without IR: 37V-57V, 0.23A-0.15A, 8.5W Extended temperature range: 37V-57V, 0.48A-0.35A, 20.2W	<b>RTSP</b>	RTSP 1.0 RFC 2326 Max concurrent streams: 2 Audio support: Yes

1. All our cameras record in "adaptive quality," capturing both standard (SQ) and high quality (HQ) streams. SQ video is stored up to the amount of retention specified by the customer. The amount of HQ video stored on the camera will depend on the amount of motion detected by the camera over time. To learn more, visit our website: <https://docs.verkada.com/docs/adaptive-quality-recording-whitepaper.pdf>

2. Lens Distortion Correction (LDC) crops the sensor field of view to deliver a rectified, undistorted output image.

3. Frame rate can be adjusted by support.

4. Extended temperature range includes operating temperatures below -10°C / 14°F and assumes IR will be enabled.



# CD43-E-F Tech Specs

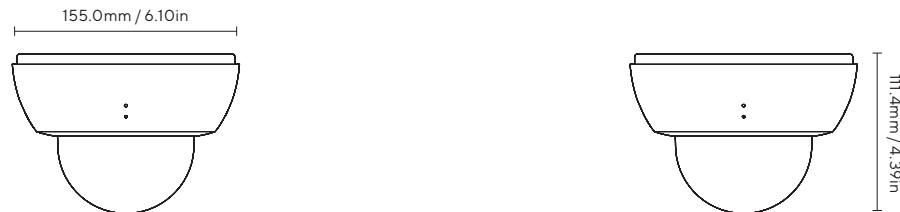
## General

<b>Operating Temperature</b>	-40°C to 50°C / -40°F to 122°F	<b>LED Indicator</b>	System power, status indicator and debug indicator
<b>Humidity</b>	0 to 90%	<b>Warranty</b>	10 Years
<b>Certifications</b>	FCC, ICES, UKCA CE, RCM, VCCI, IK10 impact rating, IP66/67 weather rating, Compliant to UL 2043, FIPS 140-2 validated, TAA compliant, FY2019 NDAA compliant	<b>Included Accessories</b>	Screw packs, mount plate with leveler, cable sealing rubber for 6.5-7.5mm, conduit adapter, T10 security driver, desiccant 4.5g

## Mechanical

<b>Weight</b>	Camera: 1100g / 38.80oz Mount plate: 193g / 6.81oz	<b>Body</b>	Aluminum, plastic dome trim
<b>Dimensions</b>	Ø: 155.0mm / 6.10in, H: 111.4mm / 4.39in with mount plate Ø: 155.0mm / 6.10in, H: 104.4mm / 4.11in without mount plate		

## Dimensions



## Software capabilities

<b>Alerts</b>	Camera status, motion detection, people detection, vehicle detection, person of interest detection, crowd detection, line-crossing detection, loitering detection, AI-powered alerts	<b>Streaming and Storage</b>	Cloud backup, configurable retention days, selectable storage location, low bandwidth mode, timelapse, RTSP
<b>People Analytics</b>	People search, attribute search, face search, occupancy trends, motion search, trajectory analysis, selective face blurring, AI-powered search	<b>Sharing and Privacy</b>	Live links, live face blur, privacy regions, audit log
<b>Vehicle Analytics</b>	Vehicle search, attribute search, motion search, trajectory analysis, occupancy trends, AI-powered search		



## CD53-E-F

### Tech Specs

#### Camera features

<b>Image Sensor</b>	1/2.8" Progressive CMOS	<b>Shutter Speed</b>	1/30 sec. to 1/10,000 sec.
<b>Sensor Resolution<sup>1</sup></b>	5MP (2688 x 1944)	<b>Day/Night</b>	IR-cut filter for day and night function
<b>Lens Type</b>	Varifocal; motorized zoom	<b>IR Cut Filter</b>	Yes
<b>Focal Length</b>	2.8-8mm	<b>IR Range</b>	30m / 98ft
<b>Aperture</b>	F1.3 - F2.4	<b>Minimum Illumination</b>	0.009 lux @ F1.9 (Color) 0 lux with IR Illuminators on
<b>Iris</b>	P-Iris	<b>Onboard Storage</b>	Capacity: From 256GB to 2TB Card: MicroSD, SDXC
<b>Field of View (after LDC<sup>2</sup>)</b>	Horizontal: 109° - 39° (91° - 36°) Vertical: 80° - 29° (71° - 28°) Diagonal: 140° - 48° (107° - 44°)	<b>CPU</b>	Ambarella CV75S88
<b>Sensor Movement</b>	Tilt: 60° Pan: 360° Rotation: 350°		

#### Standard video settings

<b>Compression</b>	H.265, H.264	<b>Historical Video Settings</b>	Adaptive quality <sup>1</sup>
<b>Frame Rate<sup>3</sup></b>	24fps	<b>Live Streaming Settings</b>	High quality (HQ): Up to 3,000 Kbps (default) Standard quality (SQ): Up to 600 Kbps

#### Standard audio settings

<b>Audio</b>	Supported	<b>Interface</b>	Built-in microphone
<b>Audio Capacity</b>	One-way audio	<b>Effective Range</b>	5m / 16ft

#### Power and network

<b>Power Input<sup>4</sup></b>	With IR: IEEE 802.3at Type 2 PoE+ Without IR: IEEE 802.3af Type 1 PoE Extended temperature range: N/A	<b>Connectivity</b>	RJ-45 cable connector for network/PoE connection; 10 / 100 / 1000 Mbps
<b>Power Consumption<sup>4</sup></b>	With IR: 37V-57V, 0.39A-0.29A, 16.8W Without IR: 37V-57V, 0.23A-0.15A, 8.5W Extended temperature range: N/A	<b>RTSP</b>	RTSP 1.0 RFC 2326 Max concurrent streams: 2 Audio support: Yes

1. All our cameras record in "adaptive quality," capturing both standard (SQ) and high quality (HQ) streams. SQ video is stored up to the amount of retention specified by the customer. The amount of HQ video stored on the camera will depend on the amount of motion detected by the camera over time. To learn more, visit our website: <https://docs.verkada.com/docs/adaptive-quality-recording-whitepaper.pdf>

2. Lens Distortion Correction (LDC) crops the sensor field of view to deliver a rectified, undistorted output image.

3. Frame rate can be adjusted by support.

4. Extended temperature range includes operating temperatures below -10°C / 14°F and assumes IR will be enabled.



# CD53-E-F Tech Specs

## General

<b>Operating Temperature</b>	-10°C to 50°C / 14°F to 122°F	<b>LED Indicator</b>	System power, status indicator, and debug indicator
<b>Humidity</b>	0 to 90%	<b>Warranty</b>	10 Years
<b>Certifications</b>	FCC, ICES, UKCA CE, RCM, VCCI, IK10 impact rating, IP66/67 weather rating, Compliant to UL 2043, FIPS 140-2 validated, TAA compliant, FY2019 NDAA compliant	<b>Included Accessories</b>	Screw packs, mount plate with leveler, T10 security driver

## Mechanical

<b>Weight</b>	Camera: 1137g / 40.11oz Mount plate: 193g / 6.81oz	<b>Body</b>	Aluminum, plastic dome trim
<b>Dimensions</b>	Ø: 155.0mm / 6.10in, H: 111.4mm / 4.39in with mount plate Ø: 155.0mm / 6.10in, H: 104.4mm / 4.11in without mount plate		

## Dimensions



## Software capabilities

<b>Alerts</b>	Camera status, motion detection, people detection, vehicle detection, person of interest detection, crowd detection, line-crossing detection, loitering detection, AI-powered alerts	<b>Streaming and Storage</b>	Cloud backup, configurable retention days, selectable storage location, low bandwidth mode, timelapse, RTSP
<b>People Analytics</b>	People search, attribute search, face search, occupancy trends, motion search, trajectory analysis, selective face blurring, AI-powered search	<b>Sharing and Privacy</b>	Live links, live face blur, privacy regions, audit log
<b>Vehicle Analytics</b>	Vehicle search, attribute search, motion search, trajectory analysis, occupancy trends, AI-powered search		



## CD63-E-F

### Tech Specs

#### Camera features

<b>Image Sensor</b>	1 / 1.2" Progressive CMOS	<b>Shutter Speed</b>	1 / 30 sec. to 1 / 10,000 sec.
<b>Sensor Resolution<sup>1</sup></b>	4K (3840 x 2160)	<b>Day/Night</b>	IR-cut filter for day and night function
<b>Lens Type</b>	Varifocal; motorized zoom	<b>IR Cut Filter</b>	Yes
<b>Focal Length</b>	5.9 - 13.3mm	<b>IR Range</b>	40m / 130ft
<b>Aperture</b>	F1.5 - F2.9	<b>Minimum Illumination</b>	0.009 lux @ F1.9 (Color) 0 lux with IR illuminators on
<b>Iris</b>	P-Iris	<b>Onboard Storage</b>	Capacity: From 512GB to 3TB Card: MicroSD, SDXC
<b>Field of View (after LDC<sup>2</sup>)</b>	Horizontal: 109° - 49° (102° - 47°) Vertical: 58° - 28° (58° - 27°) Diagonal: 113° - 55° (107° - 53°)	<b>CPU</b>	Ambarella CV72S66
<b>Sensor Movement</b>	Tilt: 65° Pan: 360° Rotation: 350°		

#### Standard video settings

<b>Compression</b>	H.265, H.264	<b>Historical Video Settings</b>	Adaptive quality <sup>1</sup>
<b>Frame Rate<sup>3</sup></b>	24fps	<b>Live Streaming Settings</b>	High quality (HQ): Up to 4,500 Kbps (default) Standard quality (SQ): Up to 600 Kbps

#### Standard audio settings

<b>Audio</b>	Supported	<b>Interface</b>	Built-in microphone
<b>Audio Capacity</b>	One-way audio	<b>Effective Range</b>	5m / 16ft

#### Power and network

<b>Power Input<sup>4</sup></b>	With IR: IEEE 802.3at Type 2 PoE+ Without IR: IEEE 802.3af Type 1 PoE Extended temperature range: IEEE 802.3at Type 2 PoE+	<b>Connectivity</b>	RJ-45 cable connector for network/PoE connection; 10 / 100 / 1000 Mbps
<b>Power Consumption<sup>4</sup></b>	With IR: 43-57V, 0.48-0.36A, 20.4W Without IR: 43-57V, 0.27-0.20A, 11.3W Extended temperature range: 43-57V, 0.60-0.45A, 25.5W	<b>RTSP</b>	RTSP 1.0 RFC 2326 Max concurrent streams: 2 Audio support: Yes

1. All our cameras record in "adaptive quality," capturing both standard (SQ) and high quality (HQ) streams. SQ video is stored up to the amount of retention specified by the customer. The amount of HQ video stored on the camera will depend on the amount of motion detected by the camera over time. To learn more, visit our website: <https://docs.verkada.com/docs/adaptive-quality-recording-whitepaper.pdf>

2. Lens Distortion Correction (LDC) crops the sensor field of view to deliver a rectified, undistorted output image.

3. Frame rate can be adjusted by support.

4. Extended temperature range includes operating temperatures below -10°C / 14°F and assumes IR will be enabled.



# CD63-E-F Tech Specs

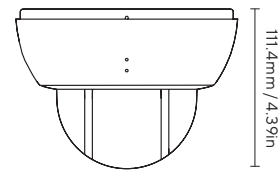
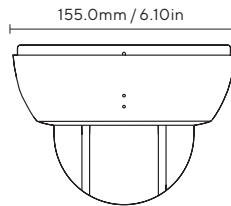
## General

<b>Operating Temperature</b>	-40°C to 50°C / -40°F to 122°F	<b>LED Indicator</b>	System power, status indicator and debug indicator
<b>Humidity</b>	0 to 90%	<b>Warranty</b>	10 Years
<b>Certifications</b>	FCC, ICES, UKCA, CE, RCM, NTRA, NOM, KCC, VCCI, IK10 impact rating, IEC 62368-1, IP66/67 weather rating, Compliant to UL 2043	<b>Included Accessories</b>	Screw packs, mount plate with leveler, cable sealing rubber for 6.5-7.5mm, conduit adapter, T10 security driver, desiccant 4.5g

## Mechanical

<b>Weight</b>	Camera: 1386g / 48.89oz Mount plate: 193g / 6.81oz	<b>Body</b>	Aluminum, plastic dome trim
<b>Dimensions</b>	Ø: 155.0mm / 6.10in, H: 111.4mm / 4.39in with mount plate Ø: 155.0mm / 6.10in, H: 104.4mm / 4.11in without mount plate		

## Dimensions



## Software capabilities

<b>Alerts</b>	Camera status, motion detection, people detection, vehicle detection, person of interest detection, crowd detection, line-crossing detection, loitering detection, AI-powered alerts	<b>Streaming and Storage</b>	Cloud backup, configurable retention days, selectable storage location, low bandwidth mode, timelapse, RTSP
<b>People Analytics</b>	People search, attribute search, face search, occupancy trends, motion search, trajectory analysis, selective face blurring, AI-powered search	<b>Sharing and Privacy</b>	Live links, live face blur, privacy regions, audit log
<b>Vehicle Analytics</b>	Vehicle search, attribute search, motion search, trajectory analysis, occupancy trends, AI-powered search		



## CB52-E-F

### Tech Specs

#### Camera features

<b>Image Sensor</b>	1/2.8" Progressive CMOS	<b>Shutter Speed</b>	1/30 sec. to 1/10,000 sec.
<b>Sensor Resolution<sup>1</sup></b>	5MP (2688 x 1944)	<b>Day/Night</b>	IR-cut filter for day and night function
<b>Lens Type</b>	Varifocal; motorized zoom	<b>IR Cut Filter</b>	Yes
<b>Focal Length</b>	2.8mm–8mm	<b>IR Range</b>	30m / 98ft
<b>Aperture</b>	F1.3–F2.4	<b>Minimum Illumination</b>	0.009 lux @ F1.9 (Color) 0 lux with IR Illuminators on
<b>Iris</b>	P-Iris	<b>Onboard Storage</b>	Capacity: From 256GB to 2TB Card: MicroSD, SDXC
<b>Field of View (after LDC<sup>2</sup>)</b>	Horizontal: 99° - 41° (95° - 39°) Vertical: 74° - 30° (74° - 30°) Diagonal: 125° - 50° (110° - 48°)	<b>CPU</b>	Ambarella CV25S88
<b>Camera Movement</b>	Tilt: 0° to 90° Pan: 360° Rotation: 360°		

#### Standard video settings

<b>Compression</b>	H.265, H.264	<b>Historical Video Settings</b>	Adaptive quality <sup>1</sup>
<b>Frame Rate<sup>3</sup></b>	24fps	<b>Live Streaming Settings</b>	High quality (HQ): Up to 3,000 Kbps (default) Standard quality (SQ): Up to 600 Kbps

#### Standard audio settings

<b>Audio</b>	Not supported
--------------	---------------

#### Power and network

<b>Power Input<sup>4</sup></b>	With IR: IEEE 802.3at Type 2 PoE+ Without IR: IEEE 802.3af Type 1 PoE Extended temperature range: IEEE 802.3at Type 2 PoE+	<b>Connectivity</b>	RJ-45 cable connector for network/PoE connection; 10 / 100 Mbps
<b>Power Consumption<sup>4</sup></b>	With IR: 37-57V, 0.38-0.25A, 14.0W Without IR: 37-57V, 0.09-0.06A, 3.5W Extended temperature range: 37-57V, 0.61-0.37A, 22.6W	<b>RTSP</b>	RTSP 1.0 RFC 2326 Max concurrent streams: 2 Audio support: No

1. All our cameras record in "adaptive quality," capturing both standard (SQ) and high quality (HQ) streams. SQ video is stored up to the amount of retention specified by the customer. The amount of HQ video stored on the camera will depend on the amount of motion detected by the camera over time. To learn more, visit our website: <https://docs.verkada.com/docs/adaptive-quality-recording-whitepaper.pdf>

2. Lens Distortion Correction (LDC) crops the sensor field of view to deliver a rectified, undistorted output image.

3. Frame rate can be adjusted by support.

4. Extended temperature range includes operating temperatures below -10°C / 14°F and assumes IR will be enabled.



# CB52-E-F Tech Specs

## General

<b>Operating Temperature</b>	-40°C to 50°C / -40°F to 122°F	<b>LED Indicator</b>	System power and status indicator
<b>Humidity</b>	0 to 90%	<b>Warranty</b>	10 Years
<b>Certifications</b>	FCC, ICES, CE, UKCA, RCM, VCCI, BIS, UL/IEC62368-1, IP67 weather rating, IK10 impact rating	<b>Included Accessories</b>	4x M4x8 screws, 4x TP4x30 mount screws, mount plate, junction box adapter, junction box cover, T25 hand tool

## Mechanical

<b>Weight</b>	Camera: 1464g / 51.64oz Mount plate: 33g / 1.16oz	<b>Body</b>	Aluminum
<b>Dimensions</b>	L: 254.0mm / 10.00in, Ø: 85.0mm / 3.35in		

## Dimensions



## Software capabilities

<b>Alerts</b>	Camera status, motion detection, people detection, vehicle detection, person of interest detection, crowd detection, line-crossing detection, loitering detection, AI-powered alerts	<b>Streaming and Storage</b>	Cloud backup, configurable retention days, selectable storage location, low bandwidth mode, timelapse, RTSP
<b>People Analytics</b>	People search, attribute search, face search, occupancy trends, motion search, trajectory analysis, selective face blurring, AI-powered search	<b>Sharing and Privacy</b>	Live links, live face blur, privacy regions, audit log
<b>Vehicle Analytics</b>	Vehicle search, attribute search, motion search, trajectory analysis, occupancy trends, AI-powered search	<b>License Plate Recognition</b>	License plate of interest alerts, license plate indexing



# CB52-TE-F Tech Specs

## Camera features

<b>Image Sensor</b>	1/2.8" Progressive CMOS	<b>Shutter Speed</b>	1/30 sec. to 1/10,000 sec.
<b>Sensor Resolution<sup>1</sup></b>	5MP (2688 x 1944)	<b>Day/Night</b>	IR-cut filter for day and night function
<b>Lens Type</b>	Varifocal; motorized zoom	<b>IR Cut Filter</b>	Yes
<b>Focal Length</b>	8mm–20mm	<b>IR Range</b>	50m / 164ft
<b>Aperture</b>	F1.5–F2.8	<b>Minimum Illumination</b>	0.009 lux @ F1.9 (Color) 0 lux with IR Illuminators on
<b>Iris</b>	P-Iris	<b>Onboard Storage</b>	Capacity: From 256GB to 2TB Card: MicroSD, SDXC
<b>Field of View (after LDC<sup>2</sup>)</b>	Horizontal: 38° - 16° (37° - 16°) Vertical: 28° - 12° (27° - 12°) Diagonal: 48° - 19° (44° - 19°)	<b>CPU</b>	Ambarella CV25S88
<b>Camera Movement</b>	Tilt: 0° to 90° Pan: 360° Rotation: 360°		

## Standard video settings

<b>Compression</b>	H.265, H.264	<b>Historical Video Settings</b>	Adaptive quality <sup>1</sup>
<b>Frame Rate<sup>3</sup></b>	24fps	<b>Live Streaming Settings</b>	High quality (HQ): Up to 3,000 Kbps (default) Standard quality (SQ): Up to 600 Kbps

## Standard audio settings

<b>Audio</b>	Not supported
--------------	---------------

## Power and network

<b>Power Input<sup>4</sup></b>	With IR: IEEE 802.3at Type 2 PoE+ Without IR: IEEE 802.3af Type 1 PoE Extended temperature range: IEEE 802.3at Type 2 PoE+	<b>Connectivity</b>	RJ-45 cable connector for network/PoE connection; 10 / 100 Mbps
<b>Power Consumption<sup>4</sup></b>	With IR: 37-57V, 0.38-0.25A, 14.0W Without IR: 37-57V, 0.09-0.06A, 3.5W Extended temperature range: 37-57V, 0.61-0.37A, 22.6W	<b>RTSP</b>	RTSP 1.0 RFC 2326 Max concurrent streams: 2 Audio support: No

1. All our cameras record in "adaptive quality," capturing both standard (SQ) and high quality (HQ) streams. SQ video is stored up to the amount of retention specified by the customer. The amount of HQ video stored on the camera will depend on the amount of motion detected by the camera over time. To learn more, visit our website: <https://docs.verkada.com/docs/adaptive-quality-recording-whitepaper.pdf>

2. Lens Distortion Correction (LDC) crops the sensor field of view to deliver a rectified, undistorted output image.

3. Frame rate can be adjusted by support.

4. Extended temperature range includes operating temperatures below -8.5°C / 16.7°F and assumes IR will be enabled.



# CB52-TE-F Tech Specs

## General

<b>Operating Temperature</b>	-40°C to 50°C / -40°F to 122°F	<b>LED Indicator</b>	System power and status indicator
<b>Humidity</b>	0 to 90%	<b>Warranty</b>	10 Years
<b>Certifications</b>	FCC, ICES, CE, UKCA, RCM, VCCI, BIS, UL/IEC62368-1, IP67 weather rating, IK10 impact rating	<b>Included Accessories</b>	4x M4x8 screws, 4x TP4x30 mount screws, mount plate, junction box adapter, junction box cover, T25 hand tool

## Mechanical

<b>Weight</b>	Camera: 1478g / 52.1oz Mount plate: 33g / 1.16oz	<b>Body</b>	Aluminum
<b>Dimensions</b>	Ø: 85.0mm / 3.35in L: 254.0mm / 10.00in		

## Dimensions



## Software capabilities

<b>Alerts</b>	Camera status, motion detection, people detection, vehicle detection, person of interest detection, crowd detection, line-crossing detection, loitering detection	<b>Streaming and Storage</b>	Cloud backup, configurable retention days, selectable storage location, low bandwidth mode, timelapse, RTSP
<b>People Analytics</b>	People search, attribute search, face search, occupancy trends, motion search, trajectory analysis, selective face blurring	<b>Sharing and Privacy</b>	Live links, live face blur, privacy regions, audit log
<b>Vehicle Analytics</b>	Vehicle search, attribute search, motion search, trajectory analysis, occupancy trends	<b>License Plate Recognition</b>	License plate of interest alerts, license plate indexing



## CB62-E-F

### Tech Specs

#### Camera features

<b>Image Sensor</b>	1/2.8" Progressive CMOS	<b>Shutter Speed</b>	1/30 sec. to 1/10,000 sec.
<b>Sensor Resolution<sup>1</sup></b>	4K (3840 x 2160)	<b>Day/Night</b>	IR-cut filter for day and night function
<b>Lens Type</b>	Varifocal; motorized zoom	<b>IR Cut Filter</b>	Yes
<b>Focal Length</b>	2.8mm–8mm	<b>IR Range</b>	30m / 98ft
<b>Aperture</b>	F1.3–F2.4	<b>Minimum Illumination</b>	0.009 lux @ F1.9 (Color) 0 lux with IR Illuminators on
<b>Iris</b>	P-Iris	<b>Onboard Storage</b>	Capacity: From 512GB to 2TB Card: MicroSD, SDXC
<b>Field of View (after LDC<sup>2</sup>)</b>	Horizontal: 107° - 43° (106° - 41°) Vertical: 62° - 24° (62° - 24°) Diagonal: 126° - 49° (119° - 48°)	<b>CPU</b>	Ambarella CV22S66
<b>Camera Movement</b>	Tilt: 0° to 90° Pan: 360° Rotation: 360°		

#### Standard video settings

<b>Compression</b>	H.265, H.264	<b>Historical Video Settings</b>	Adaptive quality <sup>1</sup>
<b>Frame Rate<sup>3</sup></b>	24fps	<b>Live Streaming Settings</b>	High quality (HQ): Up to 4,500 Kbps (default) Standard quality (SQ): Up to 600 Kbps

#### Standard audio settings

<b>Audio</b>	Not supported
--------------	---------------

#### Power and network

<b>Power Input<sup>4</sup></b>	With IR: IEEE 802.3at Type 2 PoE+ Without IR: IEEE 802.3af Type 1 PoE Extended temperature range: IEEE 802.3at Type 2 PoE+	<b>Connectivity</b>	RJ-45 cable connector for network/PoE connection; 10 / 100 Mbps
<b>Power Consumption<sup>4</sup></b>	With IR: 37-57V, 0.40-0.26A, 14.9W Without IR: 37-57V, 0.11-0.08A, 4.3W Extended temperature range: 37-57V, 0.64-0.39A, 23.7W	<b>RTSP</b>	RTSP 1.0 RFC 2326 Max concurrent streams: 2 Audio support: No

1. All our cameras record in "adaptive quality," capturing both standard (SQ) and high quality (HQ) streams. SQ video is stored up to the amount of retention specified by the customer. The amount of HQ video stored on the camera will depend on the amount of motion detected by the camera over time. To learn more, visit our website: <https://docs.verkada.com/docs/adaptive-quality-recording-whitepaper.pdf>

2. Lens Distortion Correction (LDC) crops the sensor field of view to deliver a rectified, undistorted output image.

3. Frame rate can be adjusted by support.

4. Extended temperature range includes operating temperatures below -8.5°C / 16.7°F and assumes IR will be enabled.



# CB62-E-F Tech Specs

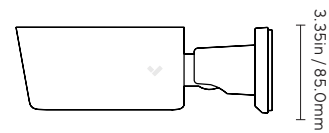
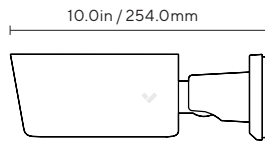
## General

<b>Operating Temperature</b>	-40°C to 50°C / -40°F to 122°F	<b>LED Indicator</b>	System power and status indicator
<b>Humidity</b>	0 to 90%	<b>Warranty</b>	10 Years
<b>Certifications</b>	FCC, ICES, CE, UKCA, RCM, VCCI, BIS, UL/IEC62368-1, IP67 weather rating, IK10 impact rating	<b>Included Accessories</b>	4x M4x8 screws, 4x TP4x30 mount screws, mount plate, junction box adapter, junction box cover, T25 hand tool

## Mechanical

<b>Weight</b>	Camera: 1464g / 51.6oz Mount plate: 33g / 1.16oz	<b>Body</b>	Aluminum
<b>Dimensions</b>	Ø: 85.0mm / 3.35in L: 254.0mm / 10.00in		

## Dimensions



## Software capabilities

<b>Alerts</b>	Camera status, motion detection, people detection, vehicle detection, person of interest detection, crowd detection, line-crossing detection, loitering detection	<b>Streaming and Storage</b>	Cloud backup, configurable retention days, selectable storage location, low bandwidth mode, timelapse, RTSP
<b>People Analytics</b>	People search, attribute search, face search, occupancy trends, motion search, trajectory analysis, selective face blurring	<b>Sharing and Privacy</b>	Live links, live face blur, privacy regions, audit log
<b>Vehicle Analytics</b>	Vehicle search, attribute search, motion search, trajectory analysis, occupancy trends	<b>License Plate Recognition</b>	License plate of interest alerts, license plate indexing



## CB62-TE-F

### Tech Specs

#### Camera features

<b>Image Sensor</b>	1/2.8" Progressive CMOS	<b>Shutter Speed</b>	1/30 sec. to 1/10,000 sec.
<b>Sensor Resolution<sup>1</sup></b>	4K (3840 x 2160)	<b>Day/Night</b>	IR-cut filter for day and night function
<b>Lens Type</b>	Varifocal; motorized zoom	<b>IR Cut Filter</b>	Yes
<b>Focal Length</b>	8mm–20mm	<b>IR Range</b>	50m / 164ft
<b>Aperture</b>	F1.5–F2.8	<b>Minimum Illumination</b>	0.009 lux @ F1.9 (Color) 0 lux with IR Illuminators on
<b>Iris</b>	P-Iris	<b>Onboard Storage</b>	Capacity: From 512GB to 2TB Card: MicroSD, SDXC
<b>Field of View (after LDC<sup>2</sup>)</b>	Horizontal: 42° - 17° (41° - 17°) Vertical: 23° - 9° (23° - 9°) Diagonal: 48° - 19° (46° - 19°)	<b>CPU</b>	Ambarella CV22S66
<b>Camera Movement</b>	Tilt: 0° to 90° Pan: 360° Rotation: 360°		

#### Standard video settings

<b>Compression</b>	H.265, H.264	<b>Historical Video Settings</b>	Adaptive quality <sup>1</sup>
<b>Frame Rate<sup>3</sup></b>	24fps	<b>Live Streaming Settings</b>	High quality (HQ): Up to 4,500 Kbps (default) Standard quality (SQ): Up to 600 Kbps

#### Standard audio settings

<b>Audio</b>	Not supported
--------------	---------------

#### Power and network

<b>Power Input<sup>4</sup></b>	With IR: IEEE 802.3at Type 2 PoE+ Without IR: IEEE 802.3af Type 1 PoE Extended temperature range: IEEE 802.3at Type 2 PoE+	<b>Connectivity</b>	RJ-45 cable connector for network/PoE connection; 10 / 100 Mbps
<b>Power Consumption<sup>4</sup></b>	With IR: 37-57V, 0.40-0.26A, 14.9W Without IR: 37-57V, 0.11-0.08A, 4.3W Extended temperature range: 37-57V, 0.64-0.39A, 23.7W	<b>RTSP</b>	RTSP 1.0 RFC 2326 Max concurrent streams: 2 Audio support: No

1. All our cameras record in "adaptive quality," capturing both standard (SQ) and high quality (HQ) streams. SQ video is stored up to the amount of retention specified by the customer. The amount of HQ video stored on the camera will depend on the amount of motion detected by the camera over time. To learn more, visit our website: <https://docs.verkada.com/docs/adaptive-quality-recording-whitepaper.pdf>

2. Lens Distortion Correction (LDC) crops the sensor field of view to deliver a rectified, undistorted output image.

3. Frame rate can be adjusted by support.

4. Extended temperature range includes operating temperatures below -10°C / 14°F and assumes IR will be enabled.



# CB62-TE-F Tech Specs

## General

<b>Operating Temperature</b>	-40°C to 50°C / -40°F to 122°F	<b>LED Indicator</b>	System power and status indicator
<b>Humidity</b>	0 to 90%	<b>Warranty</b>	10 Years
<b>Certifications</b>	FCC, ICES, CE, UKCA, RCM, VCCI, BIS, UL/IEC62368-1, IP67 weather rating, IK10 impact rating	<b>Included Accessories</b>	4x M4x8 screws, 4x TP4x30 mount screws, mount plate, junction box adapter, junction box cover, T25 hand tool

## Mechanical

<b>Weight</b>	Camera: 1478g / 52.13oz Mount plate: 33g / 1.16oz	<b>Body</b>	Aluminum
<b>Dimensions</b>	L: 254.0mm / 10.00in, Ø: 85.0mm / 3.35in		

## Dimensions



## Software capabilities

<b>Alerts</b>	Camera status, motion detection, people detection, vehicle detection, person of interest detection, crowd detection, line-crossing detection, loitering detection, AI-powered alerts	<b>Streaming and Storage</b>	Cloud backup, configurable retention days, selectable storage location, low bandwidth mode, timelapse, RTSP
<b>People Analytics</b>	People search, attribute search, face search, occupancy trends, motion search, trajectory analysis, selective face blurring, AI-powered search	<b>Sharing and Privacy</b>	Live links, live face blur, privacy regions, audit log
<b>Vehicle Analytics</b>	Vehicle search, attribute search, motion search, trajectory analysis, occupancy trends, AI-powered search	<b>License Plate Recognition</b>	License plate of interest alerts, license plate indexing



## CF83-E-F

### Tech Specs

#### Camera features

<b>Image Sensor</b>	1/1.6" Progressive CMOS	<b>Shutter Speed</b>	1/120 sec. to 1/32000 sec.
<b>Sensor Resolution<sup>1</sup></b>	12.5MP (3536 x 3536); resolution (3520 x 3520)	<b>Day/Night</b>	IR-cut filter for day and night function
<b>Lens Type</b>	Fixed	<b>IR Cut Filter</b>	Yes
<b>Focal Length</b>	1.7mm	<b>IR Range</b>	20m / 66ft
<b>Aperture</b>	F2.0	<b>Minimum Illumination</b>	0.009 lux @ F1.9 (Color) 0 lux with IR Illuminators on
<b>Iris</b>	Fixed	<b>Onboard Storage</b>	Capacity: From 512GB to 3TB Card: microSD, SDXC
<b>Field of View</b>	Horizontal: 180° Vertical: 180° Diagonal: 180°	<b>CPU</b>	Ambarella CV72S66

#### Standard video settings

<b>Compression</b>	H.265, H.264	<b>Historical Video Settings</b>	Adaptive quality <sup>1</sup>
<b>Frame Rate<sup>2</sup></b>	24fps	<b>WDR Technology</b>	120dB dynamic range, true WDR, dual exposure
<b>Live Streaming Settings</b>	High quality (HQ): Up to 4,500 Kbps (default) Standard quality (SQ): Up to 600 Kbps		

#### Standard audio settings

<b>Audio</b>	Supported	<b>Interface</b>	Built-in microphone
<b>Audio Capacity</b>	One-way audio	<b>Effective Range</b>	5m / 16ft

#### Power and network

<b>Power Input<sup>3</sup></b>	With IR: IEEE 802.3at Type 2 PoE+ Extended temperature range: IEEE 802.3at Type 2 PoE+	<b>Connectivity</b>	RJ-45 cable connector for network/ PoE connection; 10 / 100 / 1000 Mbps
<b>Power Consumption<sup>3</sup></b>	With IR: 43-57V, 0.46-0.34A, 19.5W Without IR: 43-57V, 0.22-0.17A, 9.5W Extended temperature range: 43-57V, 0.58-0.44A, 24.8W	<b>RTSP</b>	RTSP 1.0 RFC 2326 Max concurrent streams: 2 Audio support: No

1. All our cameras record in "adaptive quality," capturing both standard (SQ) and high quality (HQ) streams. SQ video is stored up to the amount of retention specified by the customer. The amount of HQ video stored on the camera will depend on the amount of motion detected by the camera over time. To learn more, visit our website:

<https://docs.verkada.com/docs/adaptive-quality-recording-whitepaper.pdf>

2. Frame rate can be adjusted by support.

3. Extended temperature range includes operating temperatures below -10°C / 14°F and assumes IR will be enabled.



# CF83-E-F Tech Specs

## General

<b>Operating Temperature</b>	-40°C to 50°C / -40°F to 122°F	<b>LED Indicator</b>	System power, status indicator, and debug indicator
<b>Humidity</b>	0 to 90%	<b>Warranty</b>	10 Years
<b>Certifications</b>	FCC, ICES, IK10 impact rating, IP66/67 weather rating, FIPS 140-2 validated, TAA and FY2019 NDAA compliant	<b>Included Accessories</b>	Screw packs, mount plate with leveler, cable sealing rubber for 6.5-7.5mm, conduit adapter, T10 security driver

## Mechanical

<b>Weight</b>	Camera: 1368g / 48.25oz Mount plate: 196g / 6.91oz	<b>Body</b>	Aluminum, plastic dome trim
<b>Dimensions</b>	Ø: 155.0mm / 6.10in, H: 76.2mm / 3.00in with mount plate Ø: 155.0mm / 6.10in, H: 69.2mm / 2.72in without mount plate		

## Dimensions



## Software capabilities

<b>Alerts</b>	Camera status, motion detection, people detection, vehicle detection, person of interest detection, crowd detection, AI-powered alerts	<b>Streaming and Storage</b>	Cloud backup, configurable retention days, selectable storage location, low bandwidth mode, timelapse, RTSP
<b>People Analytics</b>	People search, attribute search, face search, motion search, trajectory analysis <sup>4</sup> , selective face blurring, AI-powered search	<b>Sharing and Privacy</b>	Live links, privacy regions, audit log
<b>Vehicle Analytics</b>	Vehicle search, attribute search, motion search, trajectory analysis <sup>4</sup> , AI-powered search		

4. Trajectory analysis is supported in four-way split, panoramic, and ePTZ circle mode.



## CH52-E-F

### Tech Specs

#### Camera features

<b>Image Sensor</b>	4 x 1 / 2.8" Progressive CMOS	<b>Shutter Speed</b>	1 / 5 sec. to 1 / 32,000 sec.
<b>Sensor Resolution<sup>1</sup></b>	4 x 5MP (2688 x 1944)	<b>Day/Night</b>	IR-cut filter for day and night function
<b>Lens Type</b>	Varifocal; motorized zoom	<b>IR Cut Filter</b>	Yes
<b>Focal Length</b>	3.7 - 7.7mm	<b>IR Range</b>	30m / 98ft; non-adjustable
<b>Aperture</b>	F1.9 - F2.9	<b>Minimum Illumination</b>	0.009 lux @ F1.9 (color) 0 lux with IR Illuminators on
<b>Iris</b>	N/A	<b>Onboard Storage</b>	Capacity: From 1TB to 8TB Card: MicroSD, SDXC
<b>Field of View (after LDC<sup>2</sup>)</b>	Horizontal: 89° - 37° (82° - 35°) Vertical: 65° - 29° (60° - 26°) Diagonal: 99° - 46° (92° - 43°)	<b>CPU</b>	4 x Ambarella CV25S88
<b>Sensor Movement</b>	Tilt: +0°-105° for each lens from horizon Pan: +/- 90° for each lens Rotation: +/- 90° for each lens		

#### Standard video settings

<b>Compression</b>	H.265, H.264	<b>Historical Video Settings</b>	Adaptive quality <sup>1</sup>
<b>Frame Rate<sup>3</sup></b>	24fps / sensor	<b>WDR Technology</b>	120dB dynamic range, true WDR, dual exposure
<b>Live Streaming Settings (Per Head)</b>	High quality (HQ): Up to 3,000 Kbps (default) Standard quality (SQ): Up to 600 Kbps		

#### Standard audio settings

<b>Audio</b>	Not supported
--------------	---------------

#### Power and network

<b>Power Input<sup>4</sup></b>	With IR: IEEE 802.3bt Type 3 PoE++ Without IR: IEEE 802.3at Type 2 PoE+ Extended temperature range: IEEE 802.3bt Type 3 PoE++	<b>Connectivity</b>	RJ-45 cable connector for network/PoE connection; 10 / 100 Mbps
<b>Power Consumption<sup>4</sup></b>	With IR: 43-57V, 0.65-0.49A, 27.7W Without IR: 43-57V, 0.46-0.34A, 19.5W Extended temperature range: 43-57V, 0.91-0.68A, 38.7W	<b>RTSP</b>	RTSP 1.0 RFC 2326 Max concurrent streams: 8 (2 per camera head) Audio support: No

1. All our cameras record in "adaptive quality," capturing both standard (SQ) and high quality (HQ) streams. SQ video is stored up to the amount of retention specified by the customer. The amount of HQ video stored on the camera will depend on the amount of motion detected by the camera over time. To learn more, visit our website: <https://docs.verkada.com/docs/adaptive-quality-recording-whitepaper.pdf>

2. Lens Distortion Correction (LDC) crops the sensor field of view to deliver a rectified, undistorted output image.

3. Frame rate can be adjusted by support.

4. Extended temperature range includes operating temperatures below -10°C / 14°F and assumes IR will be enabled.



# CH52-E-F Tech Specs

## General

<b>Operating Temperature</b>	-40°C to 50°C / -40°F to 122°F	<b>LED Indicator</b>	System power and status indicator
<b>Humidity</b>	0 to 90%	<b>Warranty</b>	10 Years
<b>Certifications</b>	FCC, ICES-003, UL/IEC 62368-1, CE, RCM, UKCA, VCCI, BIS, IK10 impact rating, IP66 weather rating	<b>Included Accessories</b>	IR cover, mounting template, 3 mounting screws, 3 wall anchors, 2 desiccants, T10 security screwdriver, offset wrench

## Mechanical

<b>Weight</b>	Camera: 2900g / 102.29oz Mount plate: 536g / 18.91oz	<b>Body</b>	Aluminum, plastic dome trim
<b>Dimensions</b>	Ø: 275.0mm / 10.82in, H: 118.0mm / 4.65in with mount plate Ø: 267.0mm / 10.51in, H: 114.0mm / 4.49in without mount plate		

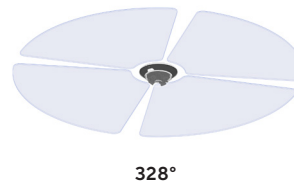
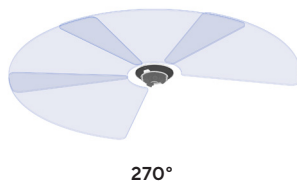
## Dimensions



## Software capabilities

<b>Alerts<sup>5</sup></b>	Camera status, motion detection, people detection, vehicle detection, person of interest detection, crowd detection, line-crossing detection, loitering detection, AI-powered alerts	<b>Streaming and Storage<sup>5</sup></b>	Cloud backup, configurable retention days, selectable storage location, low bandwidth mode, timelapse, RTSP
<b>People Analytics<sup>5</sup></b>	People search, attribute search, face search, occupancy trends, motion search, trajectory analysis, selective face blurring, AI-powered search	<b>Sharing and Privacy<sup>5</sup></b>	Live links, live face blur, privacy regions, audit log
<b>Vehicle Analytics<sup>5</sup></b>	Vehicle search, attribute search, motion search, trajectory analysis, occupancy trends, AI-powered search		

## Coverage examples



5. All the listed features can be enabled independently for each camera head.



## CP52-E-F

### Tech Specs

#### Camera features

<b>Image Sensor</b>	1/2.8" Progressive CMOS	<b>Shutter Speed</b>	1/30 sec. to 1/10,000 sec.
<b>Sensor Resolution<sup>1</sup></b>	5MP (2688 x 1944)	<b>Day/Night</b>	IR-cut filter for day and night function
<b>Lens Type</b>	Varifocal; motorized zoom	<b>IR Cut Filter</b>	Yes
<b>Focal Length</b>	5.2mm – 148.15mm	<b>IR Range</b>	100m / 328ft
<b>Aperture</b>	F1.3 – F4.8	<b>Minimum Illumination</b>	0.8 lux @ F1.4 (Color) 0 lux @ F1.4 with IR Illuminators on
<b>Iris</b>	DC Iris	<b>Onboard Storage</b>	Capacity: From 512GB to 3TB Card: MicroSD, SDXC
<b>Field of View</b>	Horizontal: 55°–2° Vertical: 42°–1.5° Diagonal: 66°–2.5°	<b>CPU</b>	Ambarella CV22S66
<b>Sensor Movement</b>	Tilt: 220° Pan: 360°		

#### Standard video settings

<b>Compression</b>	H.265 (historical video only), H.264	<b>Historical Video Settings</b>	Adaptive quality <sup>1</sup>
<b>Frame Rate<sup>2</sup></b>	24fps	<b>WDR Technology</b>	True WDR, dual exposure
<b>Live Streaming Settings<sup>3</sup></b>	Static: 1,000 Kbps (SQ), 3,000 Kbps (HQ) Moving: 2,000 Kbps (SQ), 4,500 Kbps (HQ)		

#### Standard audio settings

<b>Audio</b>	Not supported
--------------	---------------

#### Power and network

<b>Power Input<sup>4</sup></b>	With IR: IEEE 802.3bt Type 3 PoE++ Without IR: IEEE 802.3at Type 2 PoE+ Extended temperature range: IEEE 802.3bt Type 3 PoE++	<b>Connectivity</b>	RJ-45 cable connector for network/PoE connection; 10 / 100 / 1000 Mbps
<b>Power Consumption<sup>4</sup></b>	With IR: 43-57V, 1.00-0.74A, 42.3W Without IR: 43-57V, 0.55-0.41A, 23.3W Extended temperature range: 43-57V, 1.04-0.77A, 44.0W	<b>RTSP</b>	RTSP 1.0 RFC 2326 Max concurrent streams: 2 Audio support: No

1. All our cameras record in "adaptive quality," capturing both standard (SQ) and high quality (HQ) streams. SQ video is stored up to the amount of retention specified by the customer. The amount of HQ video stored on the camera will depend on the amount of motion detected by the camera over time. To learn more, visit our website:

<https://docs.verkada.com/docs/adaptive-quality-recording-whitepaper.pdf>

2. Frame rate can be adjusted by support.

3. The listed ranges represent the uplink bandwidth based on target bitrates. To learn more, visit Verkada's Knowledge Base and read "[Understanding Variable Bitrates for Verkada PTZ Cameras](#)".

4. Extended temperature range includes operating temperatures below -10°C / 14°F and assumes IR will be enabled.



# CP52-E-F Tech Specs

## General

<b>Operating Temperature</b>	-40°C to 50°C / -40°F to 122°F	<b>LED Indicator</b>	System power and status indicator
<b>Humidity</b>	0 to 90%	<b>Warranty</b>	5 Years
<b>Certifications</b>	FCC, IC, UL, CB, CE, UKCA, Japan VCCI, AS/NZS (RCM), IK10 impact rating, IP66 weather rating	<b>Included Accessories</b>	Rubber cap, pendant cap, T30 security L-wrench

## Mechanical

<b>Weight</b>	Camera: 7.07kg / 15.6lbs Pendant cap: 0.41kg / 0.9lbs	<b>Body</b>	Aluminum, plastic
<b>Dimensions</b>	Ø: 256.0mm / 10.08in, H: 406.0mm / 15.98in with pendant cap Ø: 256.0mm / 10.08in, H: 336.0mm / 13.23in without pendant cap		

## Dimensions

256.0mm / 10.08in



406.0mm / 15.98in



## Software capabilities

<b>Alerts</b>	Camera status, motion detection, people detection, vehicle detection, person of interest detection, crowd detection	<b>Streaming and Storage</b>	Cloud backup, configurable retention days, selectable storage location, timelapse, RTSP
<b>People Analytics</b>	People search, attribute search, face search, sentry mode, motion search, trajectory analysis, selective face blurring	<b>Sharing and Privacy</b>	Live links, audit log
<b>Vehicle Analytics</b>	Vehicle search, attribute search, motion search, trajectory analysis	<b>Controllers<sup>5</sup></b>	Mouse, keyboard, Xbox Wireless Controller, joystick

## Coverage examples



360° pan



220° tilt

5. For details on the supported controllers for PTZ cameras, refer to the article [here](#).



## CP63-E-F

### Tech Specs

#### Camera features

<b>Image Sensor</b>	1/1.8" Progressive CMOS	<b>Shutter Speed</b>	1/30 sec. to 1/10,000 sec.
<b>Sensor Resolution<sup>1</sup></b>	4K (3840 x 2160)	<b>Day/Night</b>	IR-cut filter for day and night function
<b>Lens Type</b>	Varifocal; motorized zoom	<b>IR Cut Filter</b>	Yes
<b>Focal Length</b>	6.5mm – 212mm	<b>IR Range</b>	100m / 328ft
<b>Aperture</b>	F1.4 – F4.9	<b>Minimum Illumination</b>	0.02 lux @ F1.4 (Color) 0 lux @ F1.4 with IR Illuminators on
<b>Iris</b>	P-Iris	<b>Onboard Storage</b>	Capacity: from 1TB to 3TB Card: MicroSD, SDXC
<b>Field of View</b>	Horizontal: 64° - 2° Vertical: 37° - 1° Diagonal: 71° - 2°	<b>CPU</b>	Ambarella CV72S66
<b>Sensor Movement</b>	Tilt: 220° Pan: 360°		

#### Standard video settings

<b>Compression</b>	H.265 (historical video only), H.264	<b>Historical Video Settings</b>	Adaptive quality <sup>1</sup>
<b>Frame Rate<sup>2</sup></b>	24fps	<b>WDR Technology</b>	True WDR, dual exposure
<b>Live Streaming Settings<sup>3</sup></b>	Static: 1,000 Kbps (SQ), 3,000 Kbps (HQ) Moving: 3,000 Kbps (SQ), 5,000 Kbps (HQ)		

#### Standard audio settings

<b>Audio</b>	Not supported
--------------	---------------

#### Power and network

<b>Power Input<sup>4</sup></b>	With IR: IEEE 802.3bt Type 3 PoE++ Without IR: IEEE 802.3bt Type 3 PoE++ Extended temperature range: IEEE 802.3bt Type 3 PoE++	<b>Connectivity</b>	RJ-45 cable connector for network/PoE connection; 10 / 100 / 1000 Mbps
<b>Power Consumption<sup>4</sup></b>	With IR: 43-57V, 1.13-0.85A, 48.0W Without IR: 43-57V, 0.80-0.60A, 34.0W Extended temperature range: 43-57V, 1.20-0.89A, 51.0W	<b>RTSP</b>	RTSP 1.0 RFC 2326 Max concurrent streams: 2 Audio support: No

1. All our cameras record in "adaptive quality," capturing both standard (SQ) and high quality (HQ) streams. SQ video is stored up to the amount of retention specified by the customer. The amount of HQ video stored on the camera will depend on the amount of motion detected by the camera over time. To learn more, visit our website:

<https://docs.verkada.com/docs/adaptive-quality-recording-whitepaper.pdf>

2. Frame rate can be adjusted by support.

3. The listed ranges represent the uplink bandwidth based on target bitrates. To learn more, visit Verkada's Knowledge Base and read "[Understanding Variable Bitrates for Verkada PTZ Cameras](#)".

4. Extended temperature range includes operating temperatures below -10°C / 14°F and assumes IR will be enabled.



# CP63-E-F Tech Specs

## General

<b>Operating Temperature</b>	-40°C to 50°C / -40°F to 122°F	<b>LED Indicator</b>	System power and status indicator
<b>Humidity</b>	0 to 90%	<b>Warranty</b>	5 Years
<b>Certifications</b>	FCC, IC, CE, UKCA, Japan VCCI, AS/NZS (RCM), IK10 impact rating, IP66 weather rating, FIPS 140-2 validated, TAA and FY2019 NDAA compliant	<b>Included Accessories</b>	Rubber cap, pendant cap, T30 security L-wrench

## Mechanical

<b>Weight</b>	Camera: 7.53kg / 16.6lbs Pendant cap: 0.41kg / 0.9lbs	<b>Body</b>	Aluminum, plastic, glass
<b>Dimensions</b>	Ø: 256.0mm / 10.08in, H: 406.0mm / 15.98in with pendant cap Ø: 256.0mm / 10.08in, H: 336.0mm / 13.23in without pendant cap		

## Dimensions

256.0mm / 10.08in



406.0 mm / 15.98 in

## Software capabilities

<b>Alerts</b>	Camera status, motion detection, people detection, vehicle detection, Person of Interest detection, crowd detection	<b>Streaming and Storage</b>	Cloud backup, configurable retention days, selectable storage location, timelapse, RTSP
<b>People Analytics</b>	People search, attribute search, face search, sentry mode, motion search, trajectory analysis, selective face blurring	<b>Sharing and Privacy</b>	Live links, audit log
<b>Vehicle Analytics</b>	Vehicle search, attribute search, motion search, trajectory analysis	<b>Controllers<sup>5</sup></b>	Mouse, keyboard, Xbox Wireless Controller, joystick

## Coverage examples



360° pan



220° tilt

5. For details on the supported controllers for PTZ cameras, refer to the article [here](#).



# Ordering Information

## Indoor Government-Grade Dome Series pricing

Model Number	MP <sup>1</sup>	WDR	Lens	IR Range	Onboard Storage	Maximum SQ Onboard Retention <sup>1</sup>	People/Vehicle Analytics	Cost (MSRP) <sup>USD</sup>
CD43-256-HW-F	5MP	✓	Fixed	20m / 66ft	256GB	30 Days	✓	\$1,199
CD43-512-HW-F	5MP	✓	Fixed	20m / 66ft	512GB	60 Days	✓	\$1,599
CD43-768-HW-F	5MP	✓	Fixed	20m / 66ft	768GB	90 Days	✓	\$1,999
CD43-1TB-HW-F	5MP	✓	Fixed	20m / 66ft	1TB	120 Days	✓	\$2,399
CD43-2TB-HW-F	5MP	✓	Fixed	20m / 66ft	2TB	365 Days	✓	\$3,699
CD53-256-HW-F	5MP	✓	Zoom	30m / 98ft	256GB	30 Days	✓	\$1,499
CD53-512-HW-F	5MP	✓	Zoom	30m / 98ft	512GB	60 Days	✓	\$1,899
CD53-768-HW-F	5MP	✓	Zoom	30m / 98ft	768GB	90 Days	✓	\$2,299
CD53-1TB-HW-F	5MP	✓	Zoom	30m / 98ft	1TB	120 Days	✓	\$2,699
CD53-2TB-HW-F	5MP	✓	Zoom	30m / 98ft	2TB	365 Days	✓	\$3,999
CD63-512-HW-F	4K	✓	Zoom	40m / 130ft	512GB	30 Days	✓	\$1,899
CD63-1TB-HW-F	4K	✓	Zoom	40m / 130ft	1TB	60 Days	✓	\$2,699
CD63-2TB-HW-F	4K	✓	Zoom	40m / 130ft	2TB	90 Days	✓	\$3,999
CD63-3TB-HW-F	4K	✓	Zoom	40m / 130ft	3TB	120 Days	✓	\$5,299

1. All our cameras record in "adaptive quality," capturing both standard and high quality streams. Standard quality (SQ) video is stored up to the amount of retention specified by the customer. The amount of high quality video stored on the camera will depend on the amount of motion detected by the camera over time. To learn more, visit our website: <https://docs.verkada.com/docs/adaptive-quality-recording-whitepaper.pdf>



# Ordering Information

## Outdoor Government-Grade Dome Series pricing

Model Number	MP <sup>1</sup>	WDR	Lens	IR Range	Onboard Storage	Maximum SQ Onboard Retention <sup>1</sup>	People/Vehicle Analytics	Cost (MSRP) <sup>USD</sup>
CD43-256E-HW-F	5MP	✓	Fixed	20m / 66ft	256GB	30 Days	✓	\$1,399
CD43-512E-HW-F	5MP	✓	Fixed	20m / 66ft	512GB	60 Days	✓	\$1,799
CD43-768E-HW-F	5MP	✓	Fixed	20m / 66ft	768GB	90 Days	✓	\$2,199
CD43-1TBE-HW-F	5MP	✓	Fixed	20m / 66ft	1TB	120 Days	✓	\$2,599
CD43-2TBE-HW-F	5MP	✓	Fixed	20m / 66ft	2TB	365 Days	✓	\$3,899
CD53-256E-HW-F	5MP	✓	Zoom	30m / 98ft	256GB	30 Days	✓	\$1,699
CD53-512E-HW-F	5MP	✓	Zoom	30m / 98ft	512GB	60 Days	✓	\$2,099
CD53-768E-HW-F	5MP	✓	Zoom	30m / 98ft	768GB	90 Days	✓	\$2,499
CD53-1TBE-HW-F	5MP	✓	Zoom	30m / 98ft	1TB	120 Days	✓	\$2,899
CD53-2TBE-HW-F	5MP	✓	Zoom	30m / 98ft	2TB	365 Days	✓	\$4,199
CD63-512E-HW-F	4K	✓	Zoom	40m / 130ft	512GB	30 Days	✓	\$2,099
CD63-1TBE-HW-F	4K	✓	Zoom	40m / 130ft	1TB	60 Days	✓	\$2,899
CD63-2TBE-HW-F	4K	✓	Zoom	40m / 130ft	2TB	90 Days	✓	\$4,199
CD63-3TBE-HW-F	4K	✓	Zoom	40m / 130ft	3TB	120 Days	✓	\$5,499

1. All our cameras record in "adaptive quality," capturing both standard and high quality streams. Standard quality (SQ) video is stored up to the amount of retention specified by the customer. The amount of high quality video stored on the camera will depend on the amount of motion detected by the camera over time. To learn more, visit our website: <https://docs.verkada.com/docs/adaptive-quality-recording-whitepaper.pdf>



# Ordering Information

## Government-Grade Bullet Series pricing

Model Number	MP <sup>1</sup>	WDR	Lens	IR Range	Onboard Storage	Maximum SQ Onboard Retention <sup>1</sup>	People/ Vehicle Analytics	Cost (MSRP) <sup>USD</sup>
CB52-256E-HW-F	5MP	✓	Zoom	30m / 98ft	256GB	30 Days	✓	\$1,799
CB52-512E-HW-F	5MP	✓	Zoom	30m / 98ft	512GB	60 Days	✓	\$2,199
CB52-768E-HW-F	5MP	✓	Zoom	30m / 98ft	768GB	90 Days	✓	\$2,599
CB52-2TBE-HW-F	5MP	✓	Zoom	30m / 98ft	2TB	365 Days	✓	\$4,299
CB52-256TE-HW-F	5MP	✓	Zoom	50m / 164ft	256GB	30 Days	✓	\$1,999
CB52-512TE-HW-F	5MP	✓	Zoom	50m / 164ft	512GB	60 Days	✓	\$2,399
CB52-768TE-HW-F	5MP	✓	Zoom	50m / 164ft	768GB	90 Days	✓	\$2,799
CB52-2TBTE-HW-F	5MP	✓	Zoom	50m / 164ft	2TB	365 Days	✓	\$4,499
CB62-512E-HW-F	4K	✓	Zoom	30m / 98ft	512GB	30 Days	✓	\$2,199
CB62-1TBE-HW-F	4K	✓	Zoom	30m / 98ft	1TB	60 Days	✓	\$2,999
CB62-2TBE-HW-F	4K	✓	Zoom	30m / 98ft	2TB	90 Days	✓	\$4,299
CB62-512TE-HW-F	4K	✓	Zoom	50m / 164ft	512GB	30 Days	✓	\$2,399
CB62-1TBTE-HW-F	4K	✓	Zoom	50m / 164ft	1TB	60 Days	✓	\$3,199
CB62-2TBTE-HW-F	4K	✓	Zoom	50m / 164ft	2TB	90 Days	✓	\$4,499

1. All our cameras record in "adaptive quality," capturing both standard and high quality streams. Standard quality (SQ) video is stored up to the amount of retention specified by the customer. The amount of high quality video stored on the camera will depend on the amount of motion detected by the camera over time. To learn more, visit our website: <https://docs.verkada.com/docs/adaptive-quality-recording-whitepaper.pdf>



## Ordering Information

### Government-Grade Fisheye Series pricing

Model Number	MP <sup>1</sup>	WDR	Lens	IR Range	Onboard Storage	Maximum SQ Onboard Retention <sup>1</sup>	People/Vehicle Analytics	Cost (MSRP) <sup>USD</sup>
CF83-1TBE-HW-F	12.5MP	✓	Fixed	20m / 66ft	512GB	30 days	✓	\$1,999
CF83-2TBE-HW-F	12.5MP	✓	Fixed	20m / 66ft	1TB	60 days	✓	\$2,799
CF83-3TBE-HW-F	12.5MP	✓	Fixed	20m / 66ft	2TB	90 days	✓	\$4,099
CF83-512E-HW-F	12.5MP	✓	Fixed	20m / 66ft	3TB	120 days	✓	\$5,399

### Government-Grade Multisensor Series pricing

Model Number	MP <sup>1</sup>	WDR	Lens	IR Range	Onboard Storage	Maximum SQ Onboard Retention <sup>1</sup>	People/Vehicle Analytics	Cost (MSRP) <sup>USD</sup>
CH52-1TBE-F	4 x 5MP	✓	Zoom	30m / 98ft	1TB	30 Days	✓	\$4,099
CH52-2TBE-F	4 x 5MP	✓	Zoom	30m / 98ft	2TB	60 Days	✓	\$5,399
CH52-4TBE-F	4 x 5MP	✓	Zoom	30m / 98ft	4TB	120 Days	✓	\$7,999
CH52-8TBE-F	4 x 5MP	✓	Zoom	30m / 98ft	8TB	365 Days	✓	\$13,199

### Government-Grade PTZ Series pricing

Model Number	MP <sup>1</sup>	WDR	Lens	IR Range	Onboard Storage	Maximum SQ Onboard Retention <sup>1</sup>	People/Vehicle Analytics	Cost (MSRP) <sup>USD</sup>
CP52-512E-F	5MP	✓	Zoom	100m / 328ft	512GB	30 Days	✓	\$4,199
CP52-1TBE-F	5MP	✓	Zoom	100m / 328ft	1TB	60 Days	✓	\$4,999
CP52-1P5TBE-F	5MP	✓	Zoom	100m / 328ft	1.5TB	90 Days	✓	\$5,799
CP52-3TBE-F	5MP	✓	Zoom	100m / 328ft	3TB	180 Days	✓	\$7,399
CP63-1TBE-HW-F	4K	✓	Zoom	100m / 328ft	1TB	30 days	✓	\$5,199
CP63-2TBE-HW-F	4K	✓	Zoom	100m / 328ft	2 TB	60 Days	✓	\$6,499
CP63-3TBE-HW-F	4K	✓	Zoom	100m / 328ft	3 TB	90 Days	✓	\$7,799

1. All our cameras record in "adaptive quality," capturing both standard and high quality streams. Standard quality (SQ) video is stored up to the amount of retention specified by the customer. The amount of high quality video stored on the camera will depend on the amount of motion detected by the camera over time. To learn more, visit our website: <https://docs.verkada.com/docs/adaptive-quality-recording-whitepaper.pdf>



## Ordering Information

### Video Security Cloud License (New/Capacity Increase)

Model Number	Description	Cost (MSRP) USD
LIC-CAM-1Y-CAP	1-Year Camera License, Capacity Increase	\$219
LIC-CAM-3Y-CAP	3-Year Camera License, Capacity Increase	\$599
LIC-CAM-5Y-CAP	5-Year Camera License, Capacity Increase	\$999
LIC-CAM-10Y-CAP	10-Year Camera License, Capacity Increase	\$1,999
LIC-CAM-MLT4-1Y-CAP	1-Year Four-Camera Multisensor License, Capacity Increase	\$649
LIC-CAM-MLT4-3Y-CAP	3-Year Four-Camera Multisensor License, Capacity Increase	\$1,799
LIC-CAM-MLT4-5Y-CAP	5-Year Four-Camera Multisensor License, Capacity Increase	\$2,999
LIC-CAM-MLT4-10Y-CAP	10-Year Four-Camera Multisensor License, Capacity Increase	\$5,999
LIC-CAM-1Y-CAP-G	1-Year Camera License for Government, Capacity Increase	\$329
LIC-CAM-3Y-CAP-G	3-Year Camera License for Government, Capacity Increase	\$899
LIC-CAM-5Y-CAP-G	5-Year Camera License for Government, Capacity Increase	\$1,499
LIC-CAM-10Y-CAP-G	10-Year Camera License for Government, Capacity Increase	\$2,999
LIC-CAM-MLT4-1Y-CAP-G	1-Year Four-Camera Multisensor License for Government, Capacity Increase	\$999
LIC-CAM-MLT4-3Y-CAP-G	3-Year Four-Camera Multisensor License for Government, Capacity Increase	\$2,699
LIC-CAM-MLT4-5Y-CAP-G	5-Year Four-Camera Multisensor License for Government, Capacity Increase	\$4,499
LIC-CAM-MLT4-10Y-CAP-G	10-Year Four-Camera Multisensor License for Government, Capacity Increase	\$8,999



# Ordering Information

## Video Security Cloud License (Renewal)

Model Number	Description	Cost (MSRP) USD
LIC-CAM-1Y-RNW	1-Year Camera License, Renewal	\$219
LIC-CAM-3Y-RNW	3-Year Camera License, Renewal	\$599
LIC-CAM-5Y-RNW	5-Year Camera License, Renewal	\$999
LIC-CAM-10Y-RNW	10-Year Camera License, Renewal	\$1,999
LIC-CAM-MLT4-1Y-RNW	1-Year Four-Camera Multisensor License, Renewal	\$649
LIC-CAM-MLT4-3Y-RNW	3-Year Four-Camera Multisensor License, Renewal	\$1,799
LIC-CAM-MLT4-5Y-RNW	5-Year Four-Camera Multisensor License, Renewal	\$2,999
LIC-CAM-MLT4-10Y-RNW	10-Year Four-Camera Multisensor License, Renewal	\$5,999
LIC-CAM-1Y-RNW-G	1-Year Camera License for Government, Renewal	\$329
LIC-CAM-3Y-RNW-G	3-Year Camera License for Government, Renewal	\$899
LIC-CAM-5Y-RNW-G	5-Year Camera License for Government, Renewal	\$1,499
LIC-CAM-10Y-RNW-G	10-Year Camera License for Government, Renewal	\$2,999
LIC-CAM-MLT4-1Y-RNW-G	1-Year Four-Camera Multisensor License for Government, Renewal	\$999
LIC-CAM-MLT4-3Y-RNW-G	3-Year Four-Camera Multisensor License for Government, Renewal	\$2,699
LIC-CAM-MLT4-5Y-RNW-G	5-Year Four-Camera Multisensor License for Government, Renewal	\$4,499
LIC-CAM-MLT4-10Y-RNW-G	10-Year Four-Camera Multisensor License for Government, Renewal	\$8,999