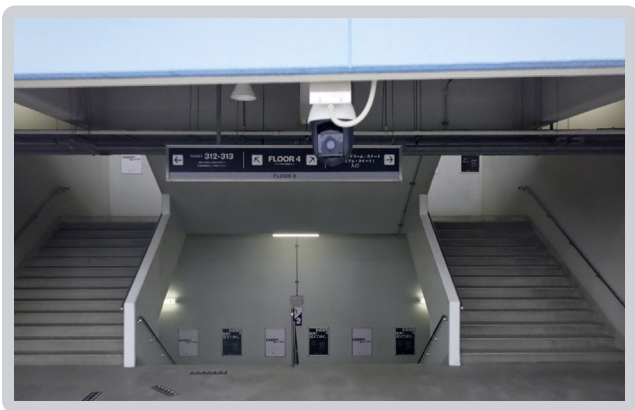


# AI-powered security built for live sports environments

Protect fans, athletes, and staff across training facilities, stadiums, and arenas with a unified, cloud-managed platform that improves visibility, helps prevent incidents, and accelerates response—without adding operational complexity.

## Comprehensive crowd and event management

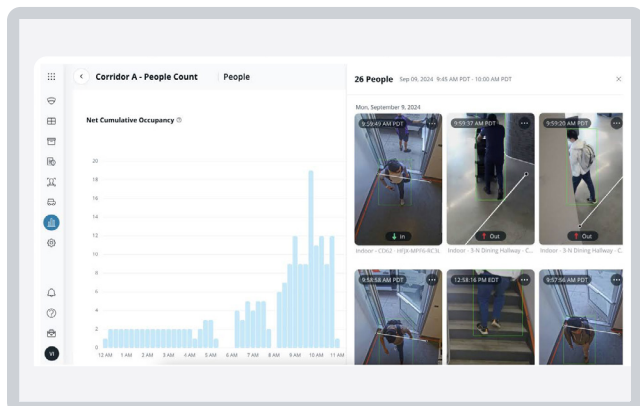


### Monitor large areas from one vantage point

Oversee key areas like seating sections, entrances, and exits using Verkada's Pan-Tilt-Zoom (PTZ) cameras. Operators can quickly adjust views to focus on crowd movements and address issues in real time.

### Centrally manage access for employees and VIPs

Control access for staff, athletes, and VIPs with a cloud-managed platform that automates entry schedules. Issue mobile credentials or keycards to eliminate physical keys while reducing security risk.

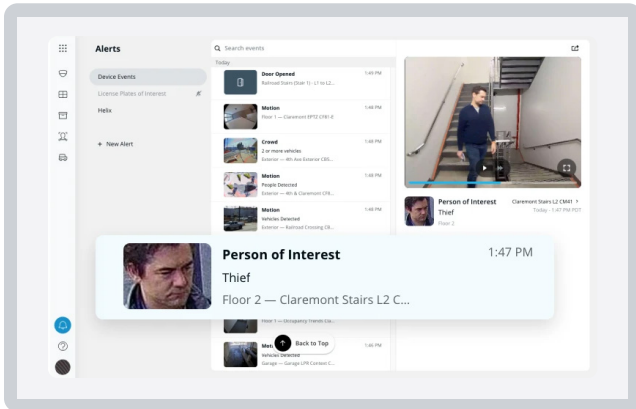


### Enhance fan experience and improve crowd control

Verkada's Occupancy Trends provide actionable insights into crowd density in critical areas, helping optimize staffing, foot traffic, and crowd flow to reduce bottlenecks during peak times.



## Proactive security and risk mitigation

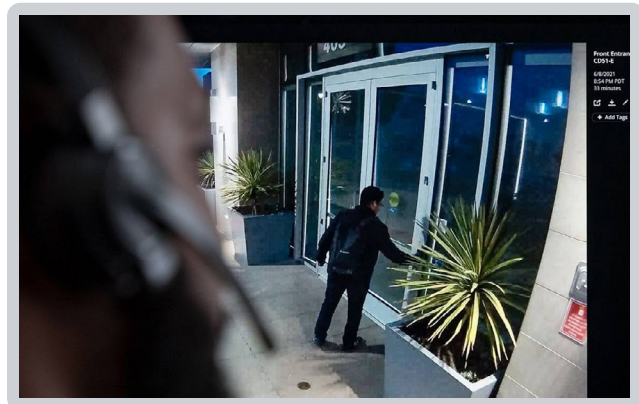
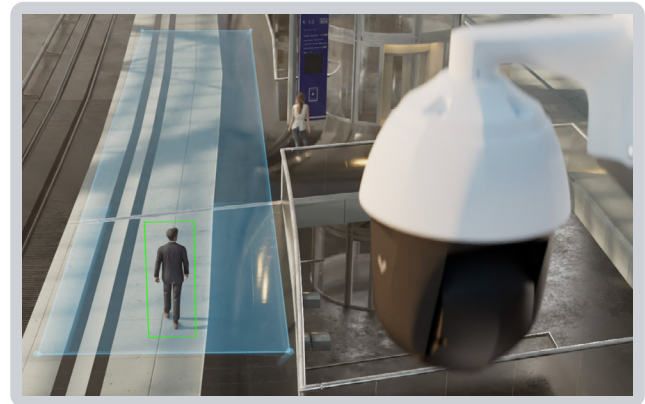


### Identify risks with proactive alerts

Verkada's AI-powered analytics detect loitering, trespassing, and after-hours activity, while Person of Interest (POI) alerts help protect facility perimeters and sensitive areas around the clock.

### Automate after-hours monitoring with Sentry Mode

Verkada's PTZ cameras can use Sentry Mode to automatically pan, tilt, and zoom in on activity within the camera's view. Paired with preset views and remote control, teams gain expansive coverage with minimal manual oversight.

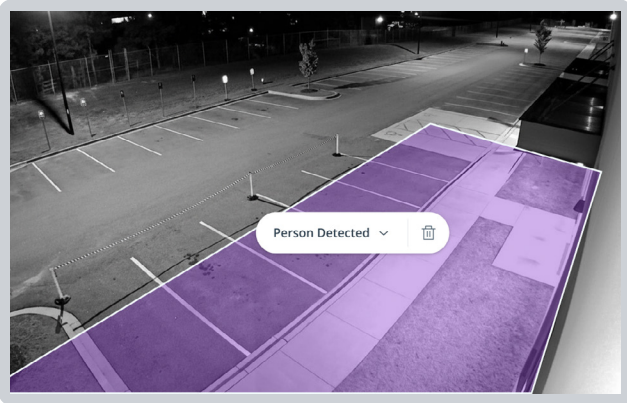


### Boost after-hours security with customizable alarms

Integrated alarms for doors, motion sensors, and glass break detectors provide immediate alerts for break-ins. Live monitoring agents are available to verify threats and coordinate next steps, including law enforcement notification.



## AI-Powered Intelligence for Sports & Venue Security

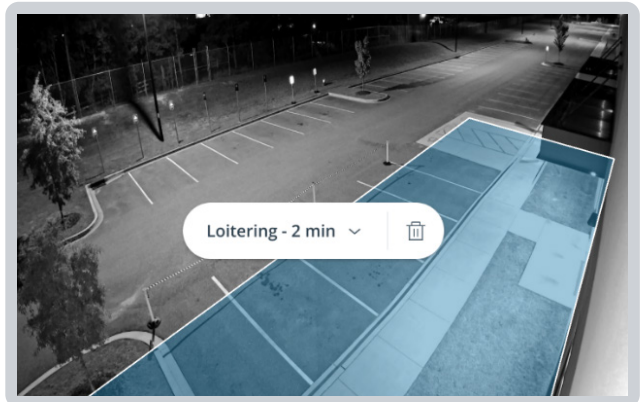


### Proactively deter threats before they escalate

AI-powered deterrence detects loitering or unauthorized presence and issues realistic, context-aware voice warnings before an alarm is raised. This helps venues deter unwanted activity in open or high-traffic areas without unnecessary disruptions, escalating only if warnings are ignored.

### Detect relevant events — not just motion

Instant alerts surface the most relevant security events for sports venues, such as perimeter breaches, restricted-area access, crowd formation, or individuals climbing fences. Preview expected alert volume and fine-tune thresholds to stay informed without alert fatigue.



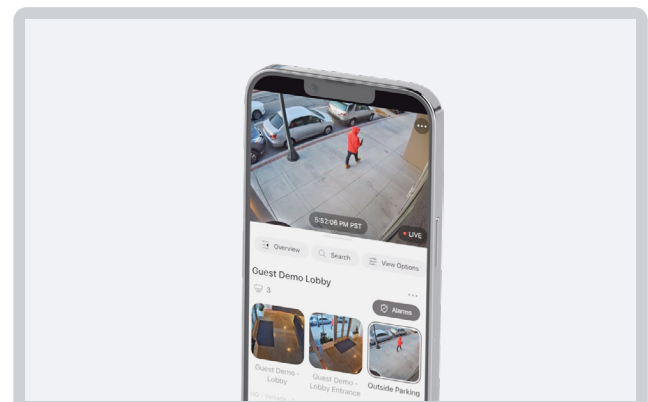
### Monitor activity across large, dynamic venues

AI-powered activity detection helps identify actions like falls and intrusion attempts in near real time, supporting safer environments for fans, staff, and athletes across concourses, perimeters, and training facilities.



### Extend AI to mobile security teams

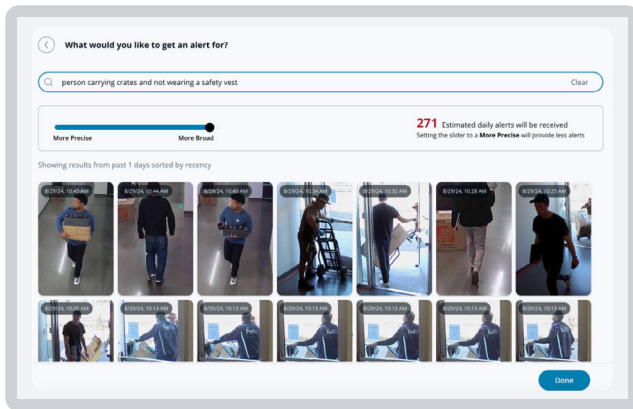
With AI-powered search on mobile, security staff can investigate incidents from anywhere — searching video by text or image while maintaining the same permissions as desktop workflows.





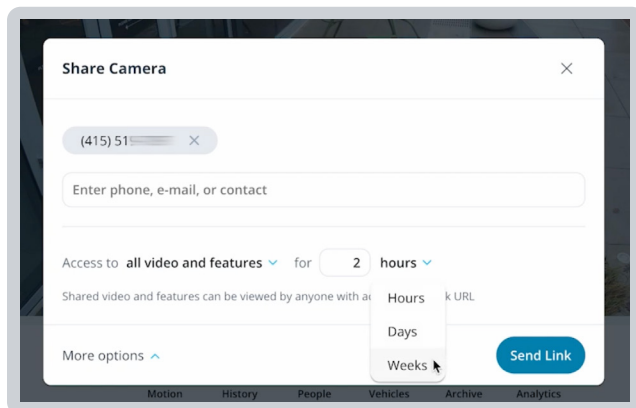
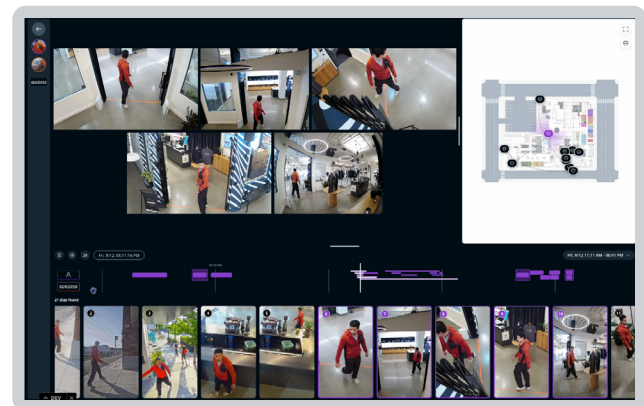


## Fast and Effective Incident Response



### Reconstruct incidents end-to-end

AI-Powered Unified Timeline automatically tracks people and vehicles across multiple cameras, providing a single, chronological view of events that can be saved and shared as evidence.

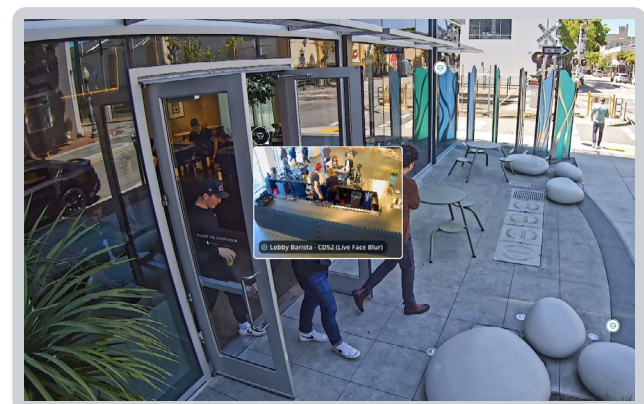


### Improve collaboration during investigations

Retrieve and share footage in a few clicks from Verkada's centralized video management platform, Command. Seamless collaboration with law enforcement enables swift action during emergencies, from evacuations to medical incidents.

### Maintain visual continuity across camera feeds

Use Verkada Shortcuts to jump between nearby cameras and maintain visual contact as situations unfold across large venues.





## Recommended Solutions for Sports Security

Protect fans, staff, and property — all from a single, cloud-based platform

### Seating and Concourse Areas

- **Video Security:** AI-enabled cameras with 24/7 recording and up to 365 days of retention
- **PTZ Cameras:** Wide-area coverage with up to 32× optical zoom for high-traffic zones
- **Occupancy Trends:** Insights into crowd density and movement
- **Alarms:** Integrated intrusion detection with live verification
- **Viewing Stations:** Centralized live monitoring for real-time response

### VIP and Restricted Zones

- **Access Control:** Automated schedules and mobile credentials
- **Intercom:** Remote identity verification and access management
- **Video Security & Alarms:** Immediate alerts to unauthorized access
- **Air Quality Sensors:** Monitor locker rooms and VIP areas for comfort and policy compliance

### Parking Lots and Perimeter

- **LPR Cameras & Gate Unlock:** License plates as access credentials
- **Cellular Gateway:** Security coverage in hard-to-wire areas
- **Alarms:** Motion and loitering detection after hours
- **PTZ Cameras:** Long-range IR visibility in low-light conditions
- **Solar-Powered Security Trailers:** AI video security, advanced LPR, and crime deterrence wherever you need — regardless of power or network availability



Contact [sales@verkada.com](mailto:sales@verkada.com) to learn more or try Verkada for free.

