

GC31 Cellular Gateway

Connect Any Verkada Device, Anywhere



Overview

The GC31 and GC31-E Cellular Gateways make it simple to deploy Verkada products anywhere with power and cell signal, including hard-to-wire locations such as parking lots, construction sites, or streetlight poles.

Simply feed the GC31 any power input and it will send both power and data to any Verkada device via PoE. Like all Verkada products, the GC31 is cloud-managed and natively integrates with other devices in our ecosystem. And with Verkada's unlimited data plan, which works out-of-the-box in many countries throughout the world, customers no longer need to work with cell carriers.

Key features

Flexible power options

Use any power input, including terminal block, barrel jack, and PoE. The gateway has two PoE outputs that provide up to 60W total.

Verkada data plan or BYO plan

Eliminate complexity with the Verkada data plan or bring your own plan. The Verkada plan offers truly unlimited data, multi-carrier redundancy, and 24/7 support.

Deploy anywhere

The GC31 comes in both indoor and outdoor versions that cover almost any environment and installation scenario, including pole, roof, wall, and tabletop.

Cloud-managed

Set up and manage the GC31 in Verkada Command from any device and any location. See all your gateways on a map, run diagnostics, and receive alerts if connectivity is lost.

Remote troubleshooting

Remotely power cycle the GC31 and any connected devices via Command. If the gateway itself is offline, it will automatically power cycle itself after 30 minutes.

Optimized data usage

The GC31 optimizes streaming, cloud backup, and other activities on downstream Verkada devices to reduce data usage and improve the viewing experience.



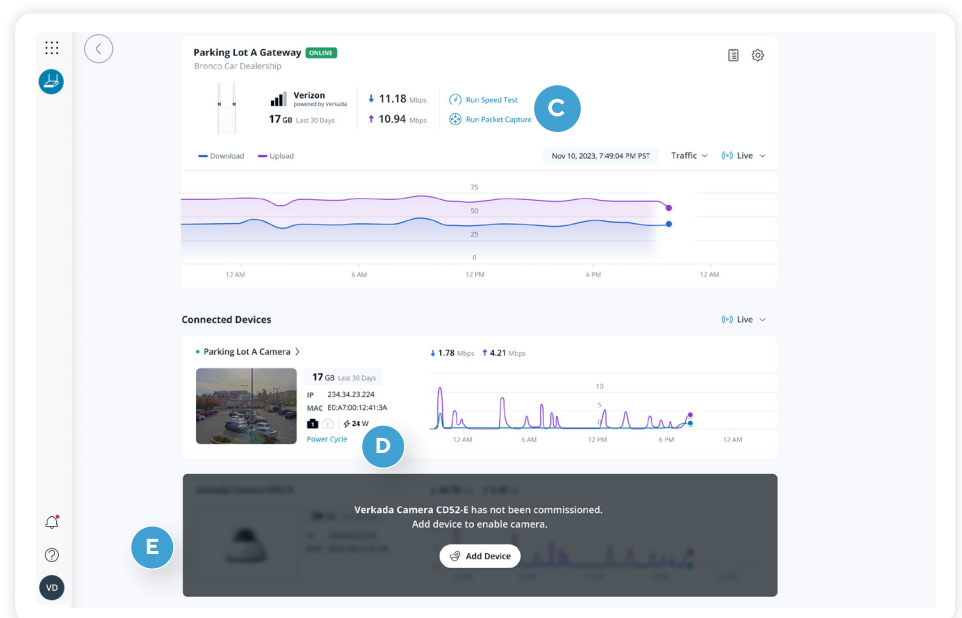
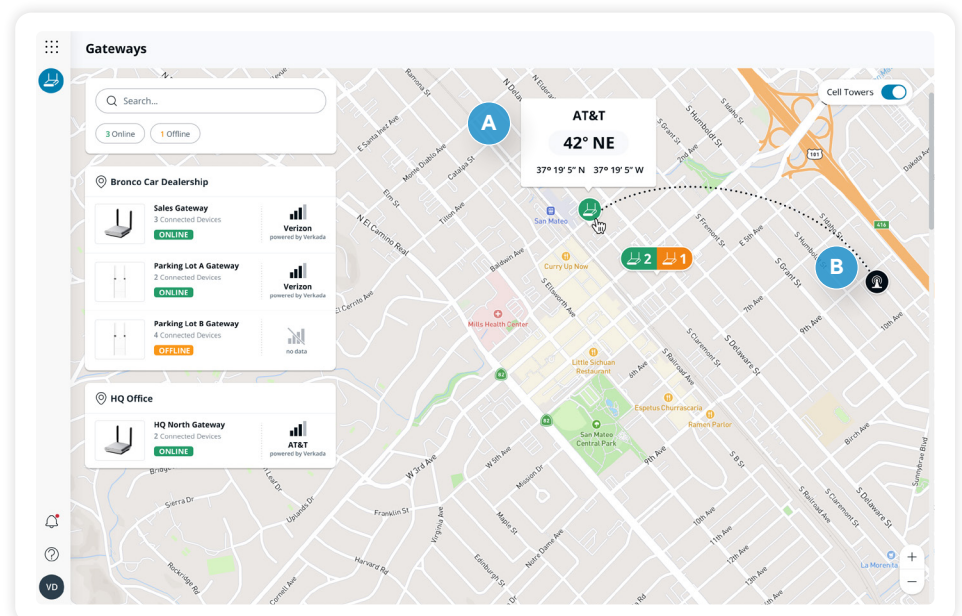
Deploy anywhere

The Verkada Cellular Gateway comes in both indoor and outdoor versions that cover a wide range of installation scenarios. The GC31-E outdoor model is IP66 rated and can be easily mounted on a pole, wall or roof. The GC31 indoor model can be wall mounted or secured on a tabletop using the Kensington lock.



Manage from anywhere

- A. View the status and GPS location of your gateways
- B. See which cell tower each gateway is using
- C. Remotely run packet capture and speed tests
- D. Remotely power cycle devices
- E. Recognize connected Verkada devices and streamline setup





Verkada Data Plan

Verkada takes away the challenge of working with cell carriers with our hassle-free data plan, which works out of the box in many countries across the world.

Key benefits

Instant connectivity out of the box

As soon as it receives power, the GC31 will automatically connect to a carrier using the pre-inserted Verkada SIM card – it just works.

Unlimited data

Unlike most carriers, which throttle your speed after a certain threshold, Verkada offers truly unlimited data.

Global coverage

The table below shows which carriers we currently use in each country that we support.

Country	Carriers used
US	Verizon, AT&T, T-Mobile
Canada	Telus
UK	Three
Australia	Optus

How it works

The base cloud license for the GC31 already includes unlimited data for Verkada non-video devices, such as access controllers or sensors, as well as 1GB/month of data for third-party devices. Unlimited data for Verkada video devices, such as cameras or intercoms, can be purchased through an add-on data license. Please see Ordering Information at the end of this document for pricing.

Note: Cloud backup is disabled on devices that use the Verkada data plan. Customers can enable cloud backup if they bring their own data plan. For more details, please refer to this [knowledge base article](#).

Bring Your Own Data Plan

Customers also have the option to bring their own data plan. The GC31 is compatible with SIM cards from virtually all major carriers in most countries throughout the world. For a list of carriers that have been tested and verified by Verkada, please refer to this [knowledge base article](#).

Always connected

Customers can insert their own SIM card in one slot while keeping the Verkada SIM in the other slot for automatic failover. If the customer-provided SIM fails, the Verkada SIM helps ensure that the gateway is always reachable.

Multi-carrier redundancy

The Verkada SIM card works across major carriers, allowing the GC31 to automatically switch carriers if the current network is down.

24/7 support

Enjoy the quick and easy 24/7 customer support that you've come to expect from Verkada.

Flexible configuration

Customers may also use their own SIM cards in both slots. In this case, customers can configure one slot as the primary SIM and use the other for automatic failover if needed.



GC31 Tech Specs



GC31 Indoor Cellular Gateway

Cellular

Connectivity	LTE cellular CAT 12	MIMO	2x2 MIMO
SIM	2 SIM slots (Nano 4FF) Dual SIM/auto SIM failover	Bands	B1, B2, B3, B4, B5, B7, B8, B12, B13, B14, B17, B18, B19, B20, B25, B26, B28, B29, B30, B38, B39, B40, B41, B42, B43, B48 (CBRS), B66, B71
Antennas	2 x SMA		

Inputs and outputs

Ethernet	2 x GigE RJ45 outputs	Power Output	2 x PoE RJ45 outputs @ 60W total (2 x IEEE 802.3at Type 2 PoE+ 30W or 1 x IEEE 802.3bt Type 3 PoE++ 60W)
Power Input	54VDC Barrel Jack (6.5/3.5mm OD/ID) 100-240VAC AC/DC Power Adapter included (region specific)	GNSS/GPS	Passive GNSS (GPS, GLONASS, and Galileo)

Compliance and certifications

RF & EMC	FCC, IC (for CA), CE (for EU) ¹	Cellular²	PTCRB, Verizon, AT&T, FirstNet
Safety	UL/IEC 62368-1, CSA C22.2 No. 62368-1		

General

Operating Temperature	-10°C to 50°C / 14°F to 122°F		Weight	0.6kg / 1.3lbs
Humidity	5-90% RH non-condensing		LEDs	1 status LED, 2 SIM indicator LEDs, 4 signal strength LEDs
Mounting Options	Wall mount or tabletop (with Kensington slot)		Warranty	10 years
Dimensions	Main Unit: L: 125mm / 4.9in W: 125mm / 4.9in H: 30mm / 1.2in	Antenna: L: 20mm / 0.8in W: 10mm / 0.4in H: 136mm / 5.4in	Included Accessories	2 x SMA antennas, AC/DC power adapter and cord, mount plate, 4 x wall anchors, T10 security torx screwdriver, 4 M4 x 25mm PH2 wall screws, RJ45 port cover

1. CE certification expected in Spring 2024.

2. Cellular carriers and operators throughout the world may only require telecom industry certifications such as PTCRB to operate on their network. Some carriers require additional testing and approval, beyond telecom certifications. A carrier listed in the approvals section means Verkada completed additional testing and acquired technical approval for that given carrier. Any carrier not listed may not require additional testing or approval beyond telecom industry certifications to operate on their network.



GC31 Indoor Cellular Gateway

Inputs and Outputs





GC31-E Tech Specs



GC31-E Outdoor Cellular Gateway

Cellular

Connectivity	LTE cellular CAT 12	MIMO	2x2 MIMO
SIM	2 SIM slots (Nano 4FF) Dual SIM/auto SIM failover	Bands	B1, B2, B3, B4, B5, B7, B8, B12, B13, B14, B17, B18, B19, B20, B25, B26, B28, B29, B30, B38, B39, B40, B41, B42, B43, B48 (CBRS), B66, B71
Antennas	2 x N Type		

Inputs and outputs

Ethernet	1 x GigE RJ45 input 2 x GigE RJ45 outputs	Power Output	2 x PoE RJ45 outputs @ 60W total (2 x IEEE 802.3at Type 2 PoE+ 30W or 1 x IEEE 802.3bt Type 3 PoE++ 60W)
Power Input	54VDC Barrel Jack (6.5/3mm OD/ID) IEEE 802.3bt Type 4 PoE++ 90W 12-36VDC Terminal Block	GNSS/GPS	Passive GNSS (GPS, GLONASS, and Galileo)

Compliance and certifications

RF & EMC	FCC, IC (for CA), CE (for EU) ¹	Cellular²	PTCRB, Verizon, AT&T, FirstNet
Safety	UL/IEC 62368-1, CSA C22.2 No. 62368-1	Weather Rating	IP66

General

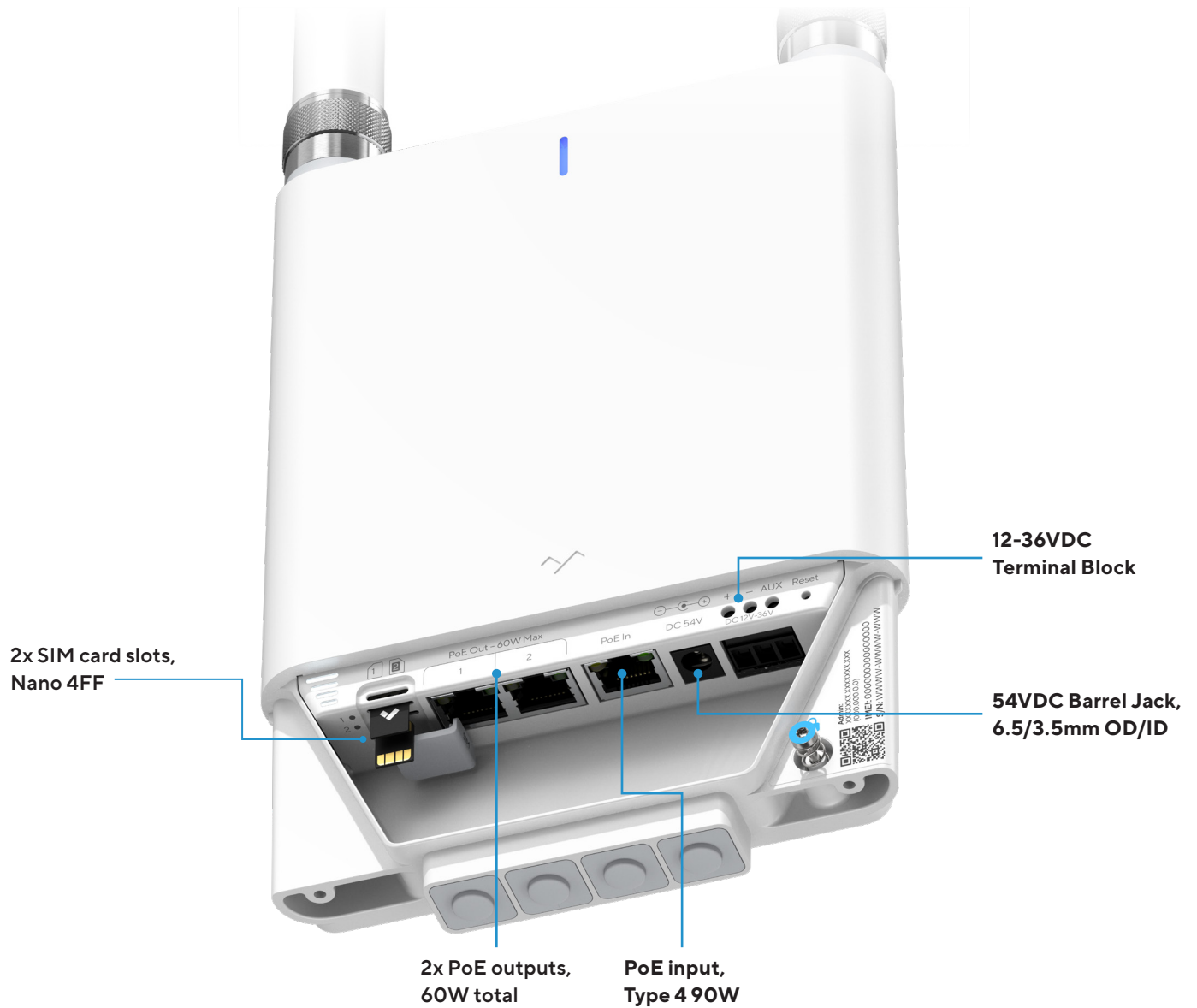
Operating Temperature	-40°C to 50°C / -40°F to 122°F		Weight	1.4kg / 3.0lbs
Humidity	5-90% RH non-condensing		LEDs	1 status LED, 2 SIM indicator LEDs, 4 signal strength LEDs
Mounting Options	Wall or pole mount		Warranty	10 years
Dimensions	Main Unit: L: 243mm / 9.6in W: 148mm / 5.9in H: 33mm / 1.3in	Antenna: Ø: 25mm / 1.0in L: 179mm / 7.1in	Included Accessories	2 x N type antennas, mount plate, 2 x pole straps, 4 x wall anchors, 4 x wall screws, T10 security torx screwdriver, 4 x 7-9 mm cable grommets, 1 x 3-5mm cable grommet, 1 x 3-wire cable grommet

1. CE certification expected in Spring 2024.

2. Cellular carriers and operators throughout the world may only require telecom industry certifications such as PTCRB to operate on their network. Some carriers require additional testing and approval, beyond telecom certifications. A carrier listed in the approvals section means Verkada completed additional testing and acquired technical approval for that given carrier. Any carrier not listed may not require additional testing or approval beyond telecom industry certifications to operate on their network.



GC31 Outdoor Cellular Gateway Inputs and Outputs





Cellular Gateway Accessories

ACC-POE-90W-E Outdoor 90W PoE++ Injector

IP67-rated PoE++ injector for powering the GC31-E in harsh environments.
The GC31-E can be mounted directly on the injector.



Tech Specs

Model Number	ACC-POE-90W-E	Weight	2.9kg / 6.4lbs
Input	100-240VAC 2.0A 50-60Hz Use the included AC power cord (region-specific) or connect directly to conduit, junction box, or AC power tap.	Dimensions	Length: 247mm / 9.7in Width: 170mm / 6.7in Height: 74mm / 2.9in
Output	Single port RJ45 PoE IEEE 802.3bt Type 4 90W Gigabit compatible	Mounting Options	Wall or pole mounting (mount plate and pole straps included)
Operating Temperature	-40°C to 50°C / -40°F to 122°F IP67 rated		



ACC-POE-90W

Indoor 90W PoE++ Injector

PoE++ injector for powering the GC31-E. Use the injector indoors or within a NEMA enclosure.



Tech Specs

Model Number	ACC-POE-90W	Weight	0.5kg / 1.1lbs
Input	100-240VAC 2.5A 50-60Hz AC power cord included (region-specific)	Dimensions	Length: 166mm / 6.5in Width: 80mm / 3.1in Height: 44mm / 1.7in
Output	Single port RJ45 PoE IEEE 802.3bt Type 4 90W Gigabit compatible	Mounting Options	Wall mounting (built-in screw tabs)
Operating Temperature	-20°C to 40°C / -4°F to 104°F		



ACC-ADAP-54V

AC/DC Power Adapter

Barrel jack AC/DC power adapter included with the GC31. If purchased to power the GC31-E, place the adapter indoors or within a NEMA enclosure.



Tech Specs

Model Number	ACC-ADAP-54V	Weight	0.5kg / 1.0lbs
Input	100-240VAC 15A Max 50-60Hz AC power cord included (region-specific)	Dimensions	Length: 134mm / 5.3in Width: 60mm / 2.4in Height: 31mm / 1.2in
Output	54V = 1.48A, 79.9W		



ACCX-TAP-DC100-E

AC/DC 7-Pin Light Pole Power Tap

Power the GC31-E by tapping into the electrical circuit of a streetlight. The 7-pin power tap connects directly to AC and provides DC via PoE.



Tech Specs

Model Number	ACCX-TAP-DC100-E	Weight	0.5kg / 1lbs
Input	105-240VAC, single phase Optional pass-through photocontrol port	Dimensions	Height: 135mm / 5.3in Diameter: 114mm / 4.5in
Output	Single port RJ45 PoE 100W, 48VDC	Mounting Options	ANSI C136.10 compliant twist-to-lock plug
Operating Temperature Range	-30°C to 50°C / -22°F to 122°F		



Ordering Information

Cellular Gateway pricing

Model Number	Description	Cost (MSRP) USD
GC31-HW-AU	GC31 Cellular Gateway, Indoor, Australia Type I Plug	\$899
GC31-HW-EU	GC31 Cellular Gateway, Indoor, Europe Type F Plug	\$899
GC31-HW-NA	GC31 Cellular Gateway, Indoor, North America Type B Plug	\$899
GC31-HW-UK	GC31 Cellular Gateway, Indoor, United Kingdom Type G Plug	\$899
GC31-E-HW	GC31 Cellular Gateway, Outdoor	\$1,299

Cellular Gateway License pricing

Each cellular gateway requires a Cellular Gateway License, which includes unlimited data for Verkada non-video devices and 1GB/month of data for third party devices.

Unlimited data for Verkada video devices (cameras or intercoms) is available through LIC-GC-1VD-1Y on a per device basis. Customers bringing their own data plan do not need to purchase LIC-GC-1VD-1Y.

LIC-GC-1Y	1-Year Cellular Gateway License, includes unlimited data for Verkada non-video devices and 1GB/month for third party devices	\$299
LIC-GC-3Y	3-Year Cellular Gateway License, includes unlimited data for Verkada non-video devices and 1GB/month for third party devices	\$849
LIC-GC-5Y	5-Year Cellular Gateway License, includes unlimited data for Verkada non-video devices and 1GB/month for third party devices	\$1,349
LIC-GC-10Y	10-Year Cellular Gateway License, includes unlimited data for Verkada non-video devices and 1GB/month for third party devices	\$2,699
LIC-GC-1VD-1Y	1-Year Cellular Gateway Data Plan, includes unlimited data for 1 Verkada video device ¹	\$999

1. The CH52-E Multisensor requires 4 data licenses (1 for each camera head).



Ordering Information

Cellular Gateway accessories pricing

Model Number	Description	Cost (MSRP) USD
ACC-ADAP-54V-AU	AC/DC Barrel Jack Power Adapter, 54V, Indoor, Australia Type I Plug	\$89
ACC-ADAP-54V-EU	AC/DC Barrel Jack Power Adapter, 54V, Indoor, Europe Type F Plug	\$89
ACC-ADAP-54V-NA	AC/DC Barrel Jack Power Adapter, 54V, Indoor, North America Type B Plug	\$89
ACC-ADAP-54V-UK	AC/DC Barrel Jack Power Adapter, 54V, Indoor, United Kingdom Type G Plug	\$89
ACC-POE-90W-AU	90W PoE++ (802.3bt Type 4) Injector, GigE, Indoor, Australia Type I Plug	\$169
ACC-POE-90W-EU	90W PoE++ (802.3bt Type 4) Injector, GigE, Indoor, Europe Type F Plug	\$169
ACC-POE-90W-NA	90W PoE++ (802.3bt Type 4) Injector, GigE, Indoor, North America Type B Plug	\$169
ACC-POE-90W-UK	90W PoE++ (802.3bt Type 4) Injector, GigE, Indoor, United Kingdom Type G Plug	\$169
ACC-POE-90W-E-AU	90W PoE++ (802.3bt Type 4) Injector, GigE, Outdoor, Australia Type I Plug	\$299
ACC-POE-90W-E-EU	90W PoE++ (802.3bt Type 4) Injector, GigE, Outdoor, Europe Type F Plug	\$299
ACC-POE-90W-E-NA	90W PoE++ (802.3bt Type 4) Injector, GigE, Outdoor, North America Type B Plug	\$299
ACC-POE-90W-E-UK	90W PoE++ (802.3bt Type 4) Injector, GigE, Outdoor, United Kingdom Type G Plug	\$299
ACCX-TAP-DC100-E	FP AC/DC 7-Pin Power Tap, 100W PoE Output, Outdoor, Model Number: FP287A-180-BEN-A	\$399