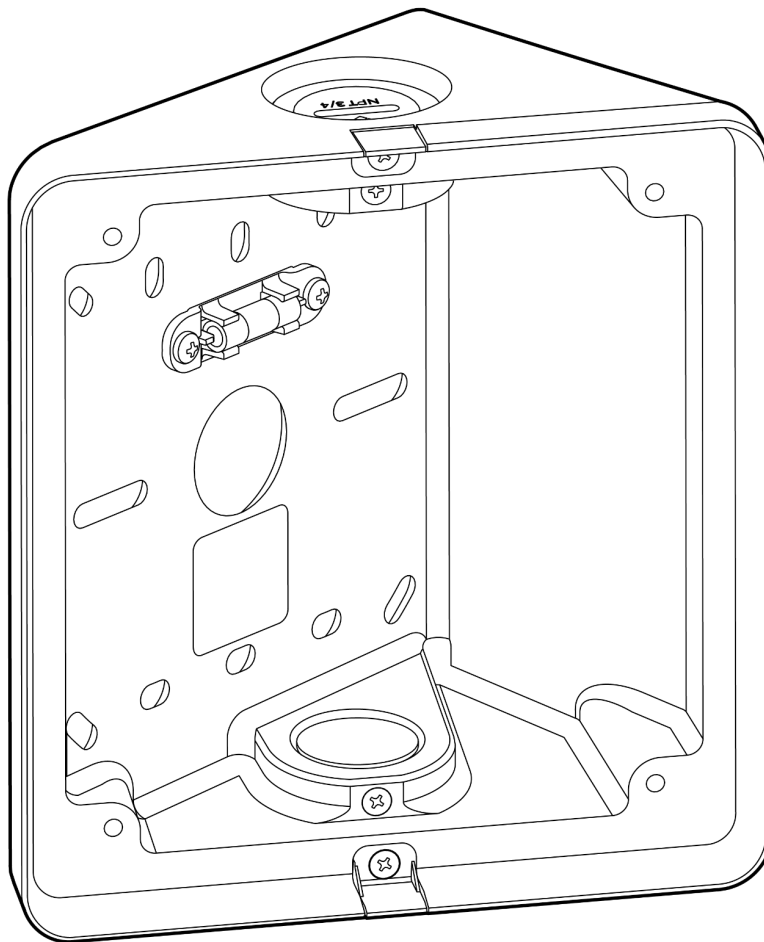


ACC-AF-SIDE-1 Side Angle Mount for AF64



Document

Document Details

Version

V1.0 20260220

(V1.0 published 20260220)

Firmware

Firmware version can be verified on Verkada

Command command.verkada.com.

Product Models

This install guide pertains to model:

- ACC-AF-SIDE-1

© Copyright 2026 Verkada Inc. All rights reserved.

Verkada and the Verkada logo are registered trademarks or service marks of Verkada Inc. (“Verkada”). All other trademarks are the property of their respective owners.

Verkada may make changes to this document at any time without notice. The information presented herein may be inaccurate or outdated, and Verkada is under no obligation to maintain it. ALL INFORMATION IS PROVIDED “AS-IS” AND WITHOUT ANY WARRANTIES, IMPLIED, EXPRESS, OR OTHERWISE. VERKADA DISCLAIMS LIABILITY FOR ALL DAMAGES, INCLUDING WITHOUT LIMITATION ANY DIRECT, INDIRECT, SPECIAL, INCIDENTAL, PUNITIVE, OR CONSEQUENTIAL DAMAGES, ARISING OUT OF USE OF THIS DOCUMENT.

Any intellectual property rights relating to Verkada products are and shall remain Verkada’s exclusive property. Use of any Verkada product is subject to Verkada’s end user agreement or other executed agreement with Verkada. No license, either expressed or implied, to use or distribute any Verkada product is granted under this document.

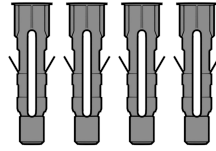
This document may not be sold, resold, licensed or sublicensed and may not be transferred without Verkada’s prior written consent. No part of this document may be reproduced in whole or in part without the express written consent of Verkada.



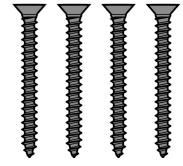
What's in the Box



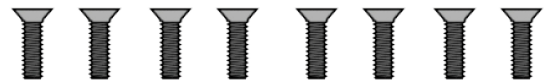
Side Angle Mount



Wall Anchors (4 pcs)
Length: 1.5"



Wall Screws (4 pcs)
Length: 1.5" Drive: #2 Phillips



#8-32 Machine Screws (8 pcs)
Length: 0.5" Drive: #2 Phillips

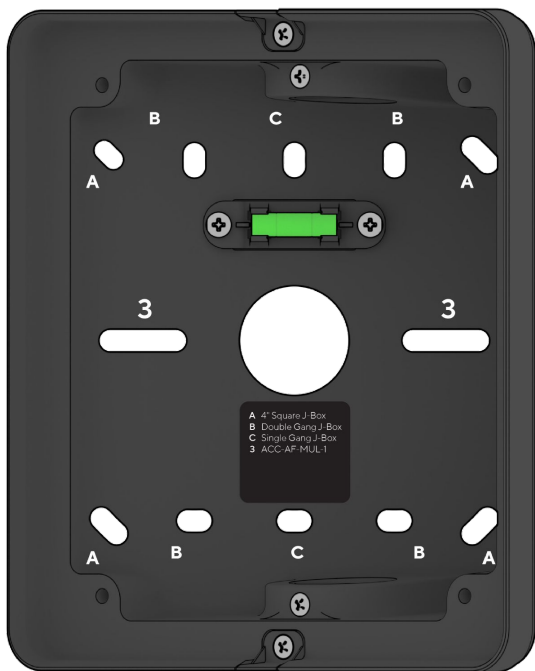
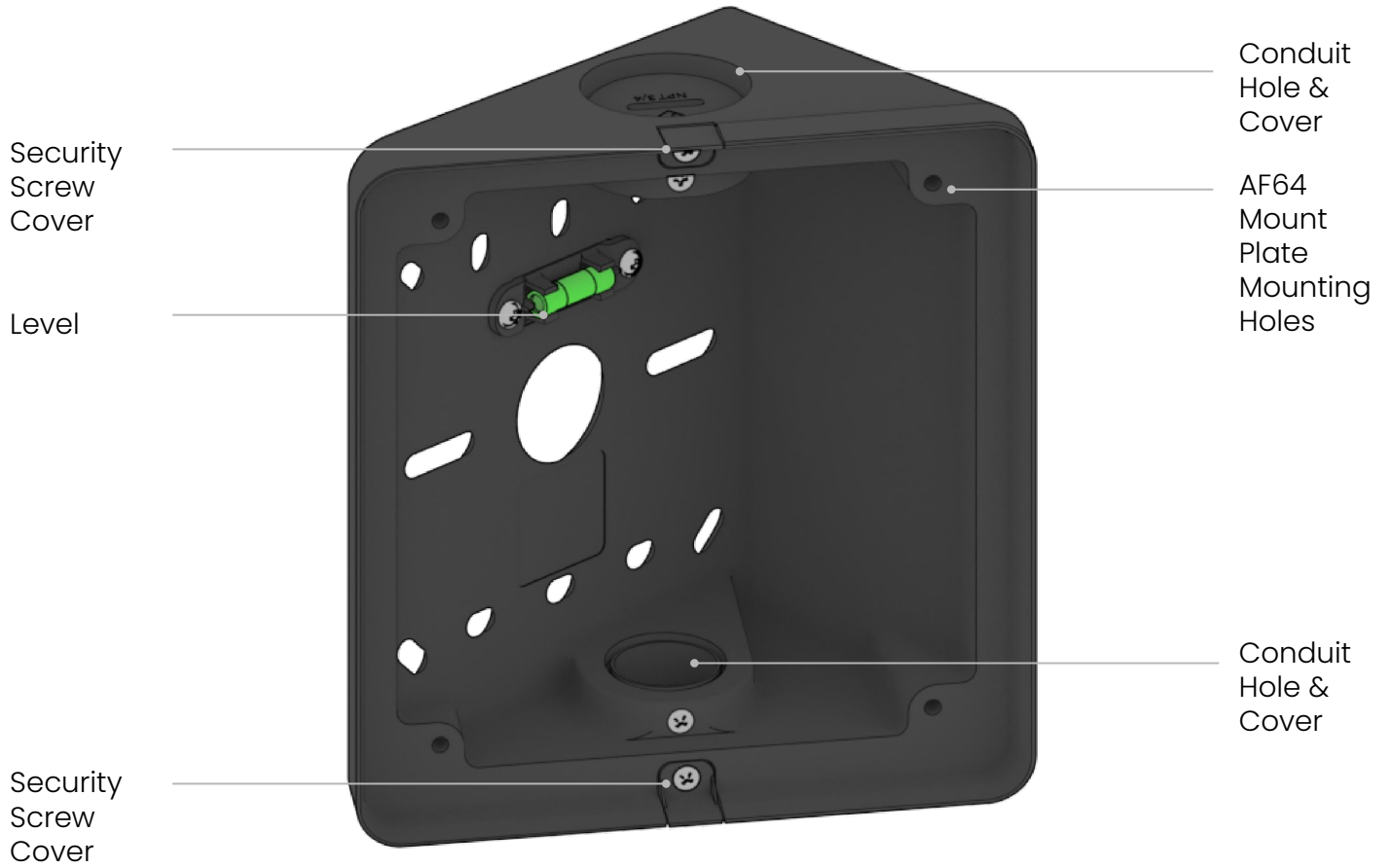
What you'll need

- An AF64 Access Station Pro
- A #2 Phillips screwdriver or power drill with a #2 Phillips driver bit
- 1/4 inch (6.5mm) drill bit for wall anchors
- 1/8 inch (3mm) drill bit for pilot holes
- A Cat5 or Cat6 Ethernet cable with a 0.2-0.25 inch diameter (5-6.5mm)

Compatible Products

- AF64 Access Station Pro
- ACC-AF-MUL-1

Overview



Hole Patterns

- A Wall Mounting, 4" Square Junction Box
- B US Double Gang Junction Box
- C US Single Gang Junction Box
- 3 ACC-AF-MUL-1



Technical Specifications

| | |
|------------------|---|
| Mount Angle | 35 degrees |
| Mount Dimensions | 140 mm x 154 mm x 79 mm 5.5 in x 6.1 in x 3.1 in |
| Mount Weight | 0.54 kg |
| Material | ADC12 |
| Color | Black |

Introduction

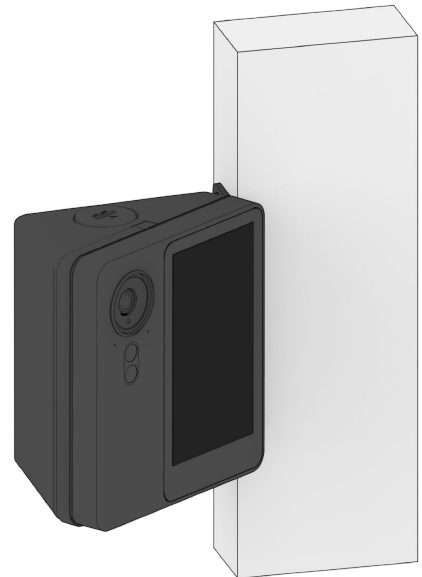
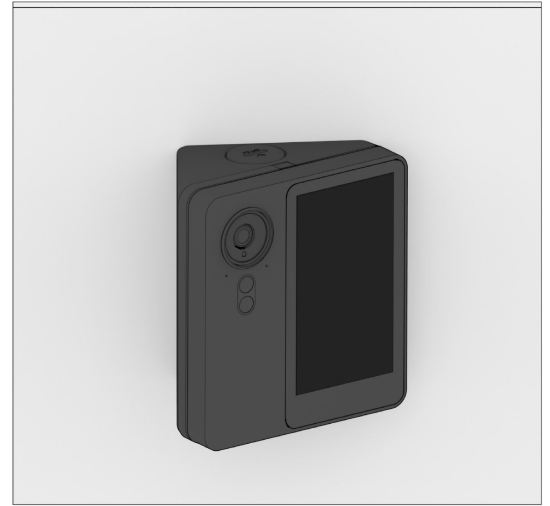
Overview

The AF64 Side Angle Mount allows the AF64 Access Station Pro to be angled left or right for optimal alignment with the door's approach path.

Before installing the AF64 Side Angle Mount, review the [AF64 Access Station Pro Install Guide](#).

The AF64 Side Angle Mount can be installed directly on a wall or junction box, or on a mullion door frame using the AF64 Mullion Mount (ACC-AF-MUL-1).

If using the AF64 Mullion Mount, proceed to the [ACC-AF-MUL-1 Install Guide](#) for additional instructions.

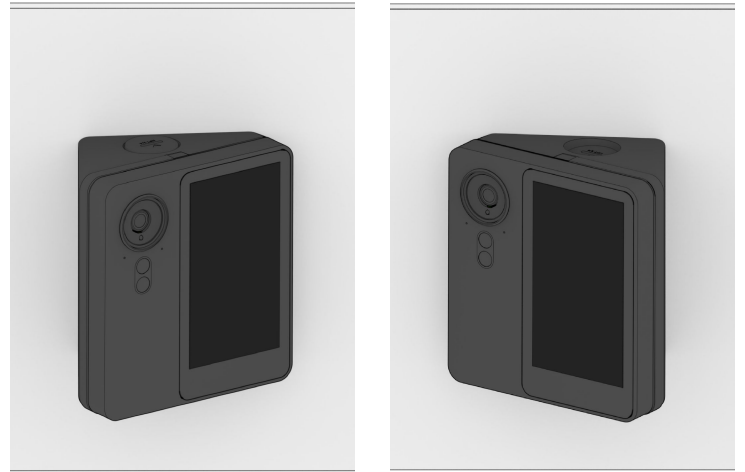


ACC-AF-MUL-1 with
ACC-AF-SIDE-1

Installation

Mounting

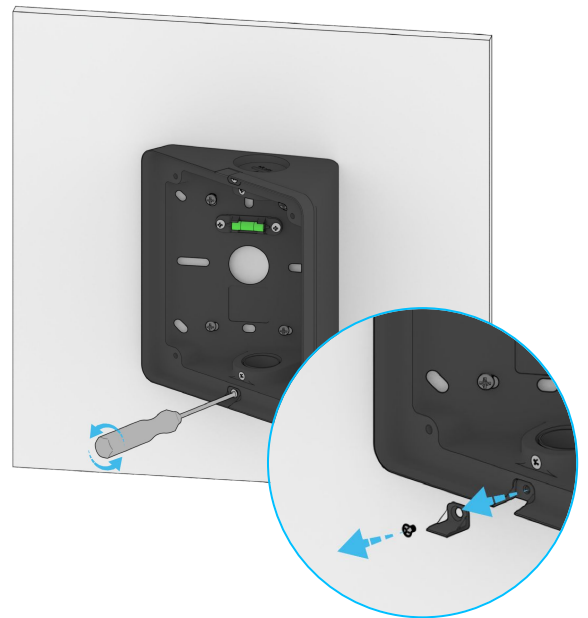
Before installation, determine whether the AF64 will be angled to the left or right.



Left

Right

Orient the Side Angle Mount accordingly and remove the bottom security screw cover from the mount. Ensure the top security screw cover remains in place.



Choose either the rear pass-through hole or the conduit holes on the bottom or sides of the mount for cable routing.

If using the conduit holes, remove the cover with a Phillips screwdriver.

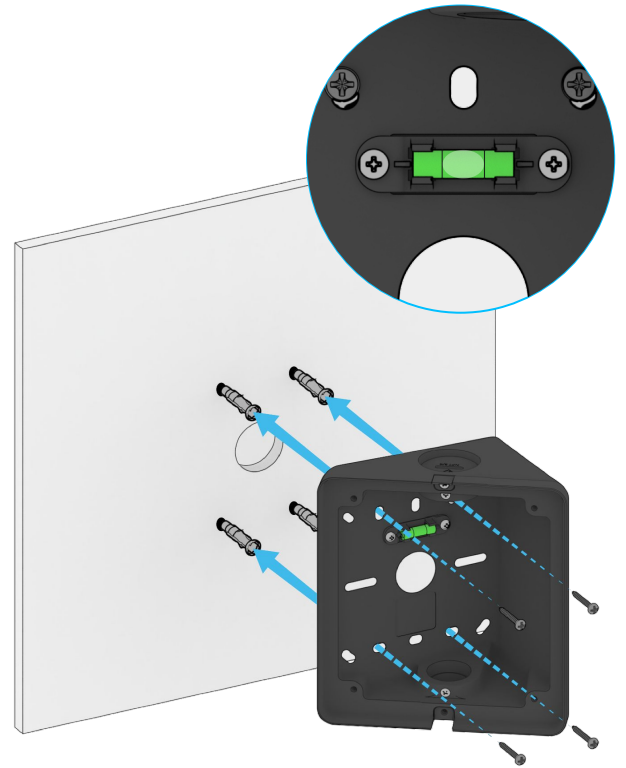


Installation

Wall Mounting

Use the Side Angle Mount to mark the locations of the four pilot holes (Hole Pattern A) and the pass-through hole (if applicable). Drill the pilot holes using a $\frac{1}{8}$ " drill bit. If installing a pass-through hole, drill it using a $\frac{7}{8}$ " drill bit.

Fasten the mount to the wall using the four wall screws. Ensure the mount is level before fully tightening the screws.



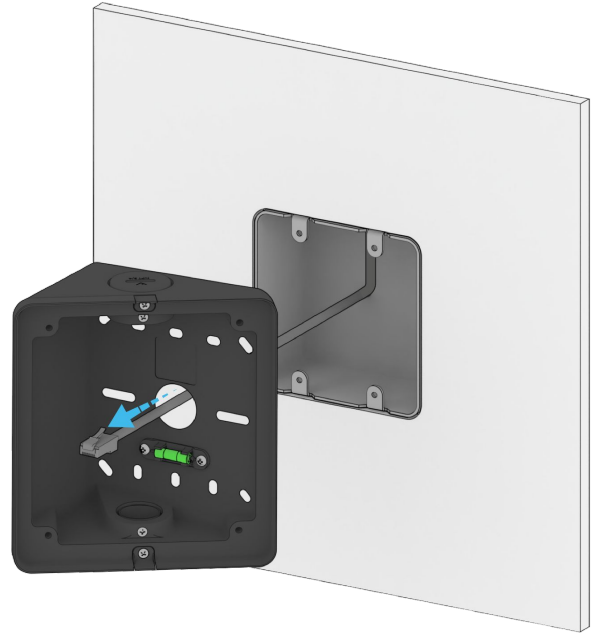
Feed the Ethernet cable through the rear pass-through hole or conduit hole and into the mount. If using the I/O Cable, route it through the same opening.



Installation

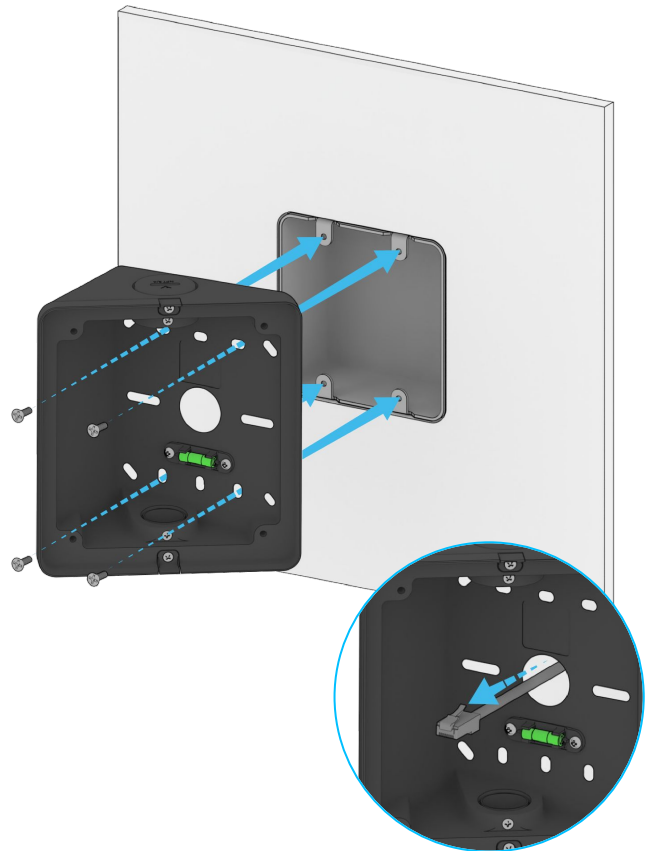
Junction Box Mounting

Feed the Ethernet cable through the rear pass-through hole and into the Side Angle Mount. If using the I/O Cable, route it through the same opening.



Align the Side Angle Mount to the Junction Box anchor holes (A, B, or C, depending on your junction box)

Secure the Side Angle Mount to the Junction Box using four #8-32 Machine Screws.



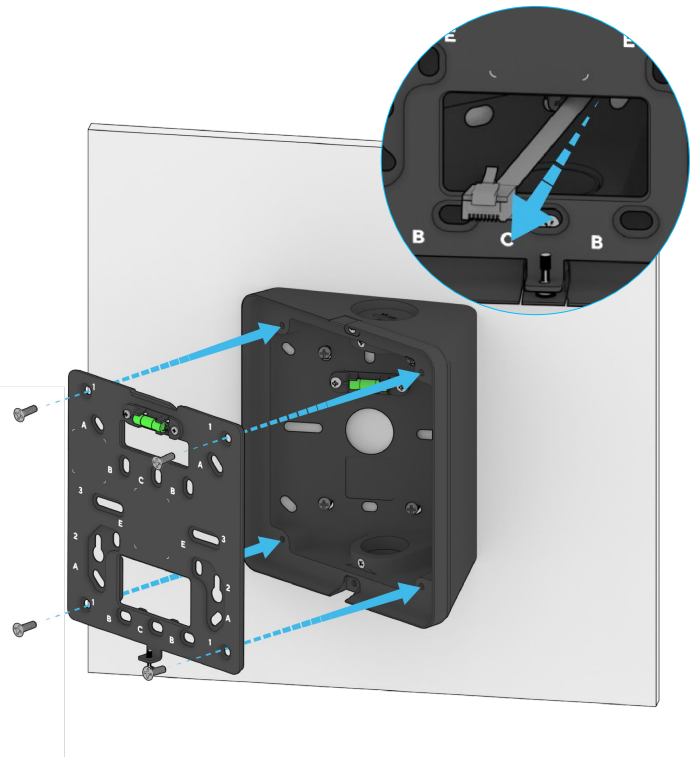
Installation

Mounting

Remove the Mount Plate from the AF64.

Feed the Ethernet cable through the AF64 Mount Plate. If using the I/O Cable, route it through the Mount Plate as well.

Align the Mount Plate with Hole Pattern 1, then secure it using four #8-32 Machine Screws.



Complete the installation by following the remaining steps in the [AF64 Access Station Pro Install Guide](#).



Appendix

Support

Thank you for purchasing this Verkada product. If for any reason you're experiencing issues or need assistance, please contact our 24/7 Technical Support Team immediately.

Sincerely,
The Verkada Team
verkada.com/support

