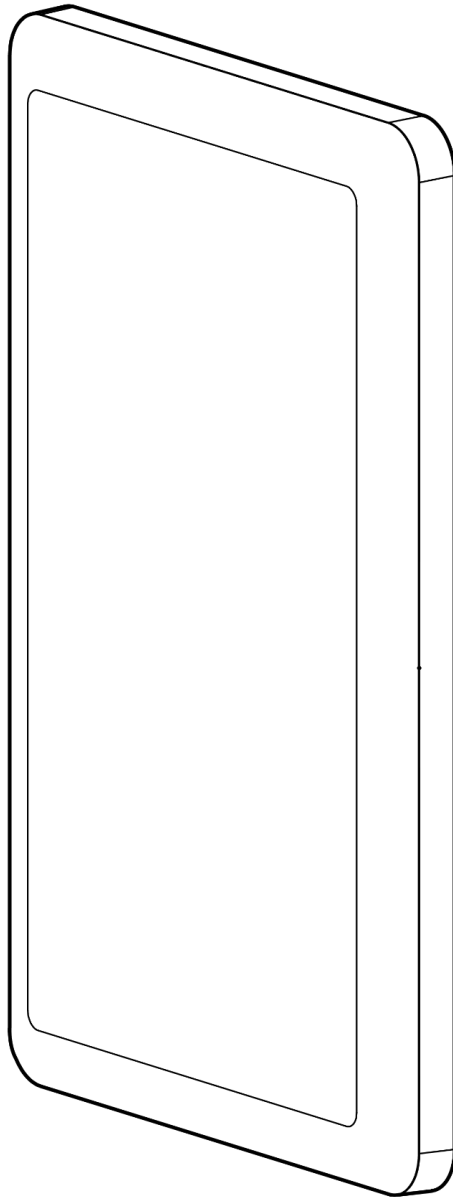


# **ACC-ANT-20**

## Outdoor Directional Wi-Fi Antenna N-Type



## Document Details

### Version

V1.0 (20250221)

(V1.0 published 20250221)

### Firmware

Firmware version can be verified on Verkada

Command [command.verkada.com](https://command.verkada.com).

### Product Models

This install guide pertains to model ACC-ANT-20.

© Copyright 2025 Verkada Inc. All rights reserved.

Verkada and the Verkada logo are registered trademarks or service marks of Verkada Inc. ("Verkada"). All other trademarks are the property of their respective owners.

Verkada may make changes to this document at any time without notice. The information presented herein may be inaccurate or outdated, and Verkada is under no obligation to maintain it. ALL INFORMATION IS PROVIDED "AS-IS" AND WITHOUT ANY WARRANTIES, IMPLIED, EXPRESS, OR OTHERWISE. VERKADA DISCLAIMS LIABILITY FOR ALL DAMAGES, INCLUDING WITHOUT LIMITATION ANY DIRECT, INDIRECT, SPECIAL, INCIDENTAL, PUNITIVE, OR CONSEQUENTIAL DAMAGES, ARISING OUT OF USE OF THIS DOCUMENT.

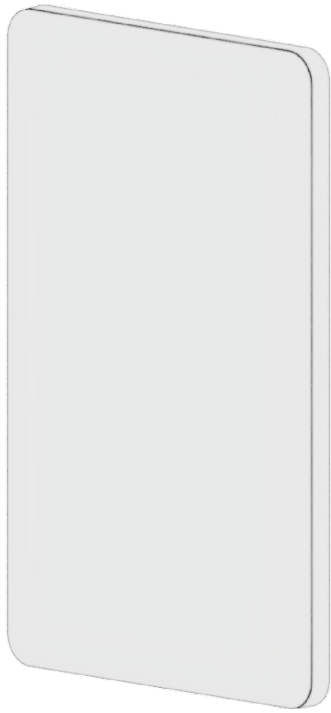
Any intellectual property rights relating to Verkada products are and shall remain Verkada's exclusive property. Use of any Verkada product is subject to Verkada's end user agreement or other executed agreement with Verkada. No license, either expressed or implied, to use or distribute any Verkada product is granted under this document.

This document may not be sold, resold, licensed or sublicensed and may not be transferred without Verkada's prior written consent. No part of this document may be reproduced in whole or in part without the express written consent of Verkada.

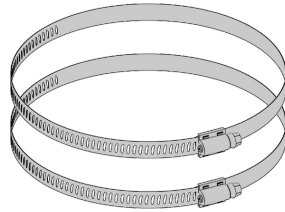


## Introduction

### What's in the box



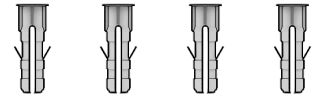
**ACC-ANT-20**



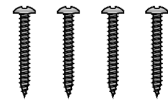
**Pole Straps (2 pcs)**  
**For Pole Diameter:** 76.2-101.6mm (3-4")  
**Drive:** Flathead Screwdriver



**Antenna Cables (2 pcs)**  
**Length:** 100cm (39in)



**#8 Wall Anchors (4 pcs)**  
**Drill Size:** 1/4"



**#8 Wall Screws (4 pcs)**  
**Length:** 0.7" **Drive:** #2 Phillips

### What you'll need

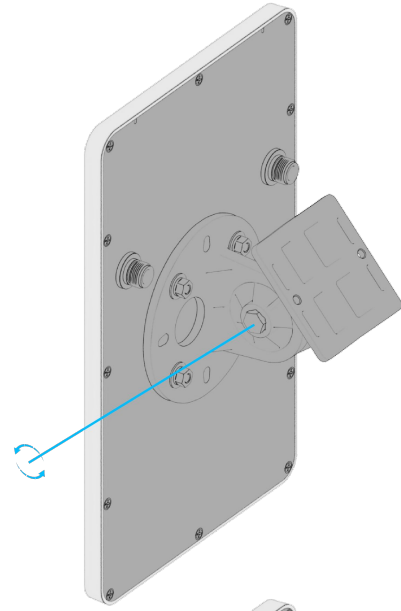
- A compatible Verkada device
- A #2 Phillips screwdriver or power drill with a #2 Phillips driver bit
- A flathead screwdriver or power drill with a flathead driver bit
- A 13mm socket or adjustable wrench
- A 1/4" (6.35mm) drill bit for pilot holes



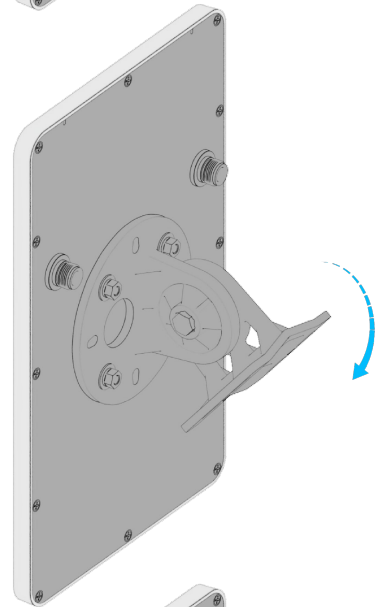
## Installation

### Preparation

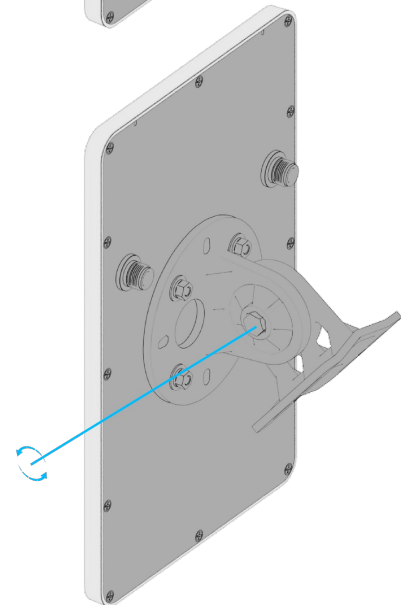
To adjust the angle of the antenna, loosen the pivot bolt with a 13mm socket.



Make the necessary adjustments.



Re-tighten the bolt.



## Installation

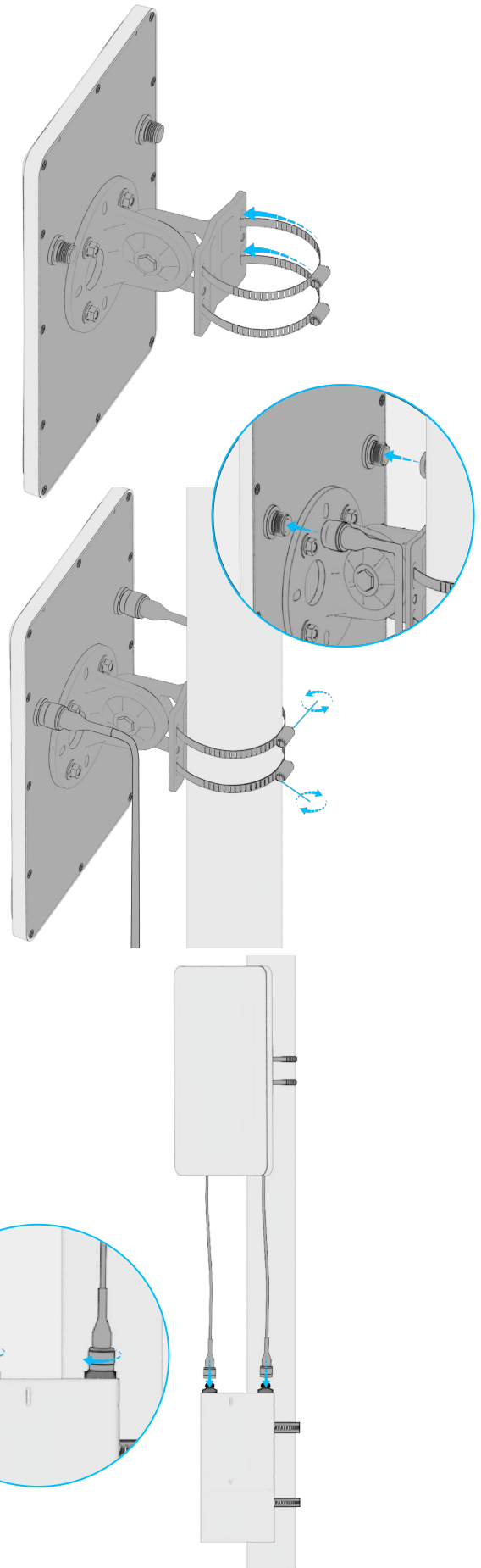
### Pole Mounting

Route the provided pole straps through the slots and around the pole.

Firmly tighten with a flathead screwdriver or drill bit.

Once the antenna is installed, connect the N-type cables by firmly tightening them onto the N-type connectors

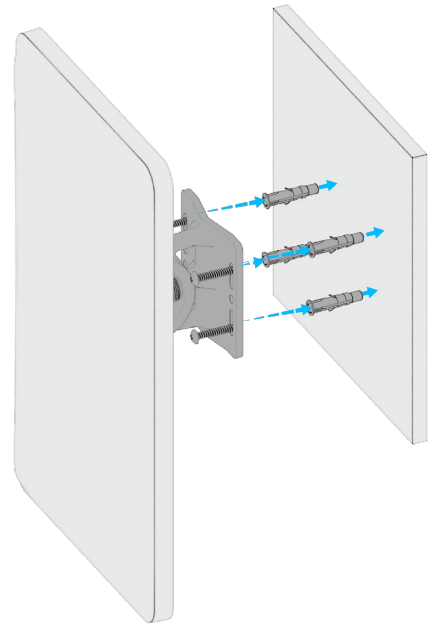
on the antenna as well as the Verkada Gateway.



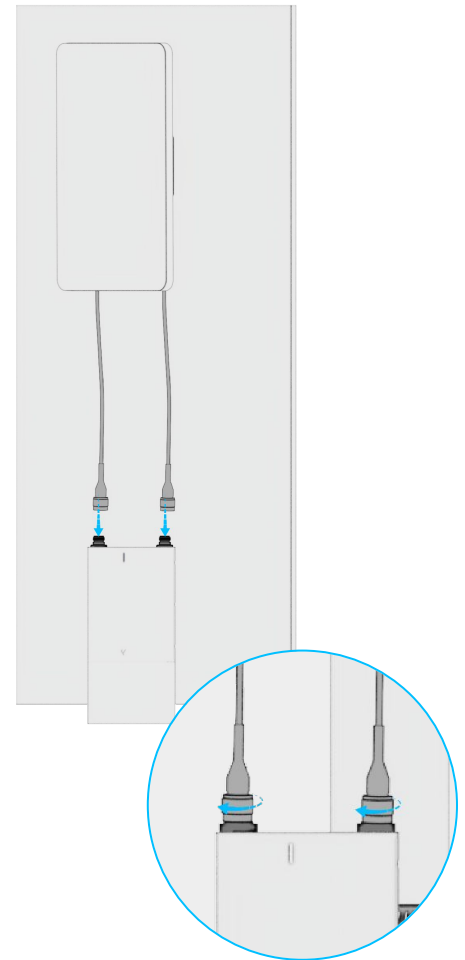
## Installation

### Wall Mounting

Drill pilot holes and use the provided wall screws and drywall anchors to fasten the antenna to the wall.



Once the antenna is installed, connect the N-type cables by firmly tightening them onto the N-type connectors on the antenna as well as the Verkada Gateway.



Appendix

## **Support**

Thank you for purchasing this Verkada product. If for any reason you're experiencing issues or need assistance, please contact our 24/7 Technical Support Team immediately.

Sincerely,  
The Verkada Team  
[verkada.com/support](https://verkada.com/support)

