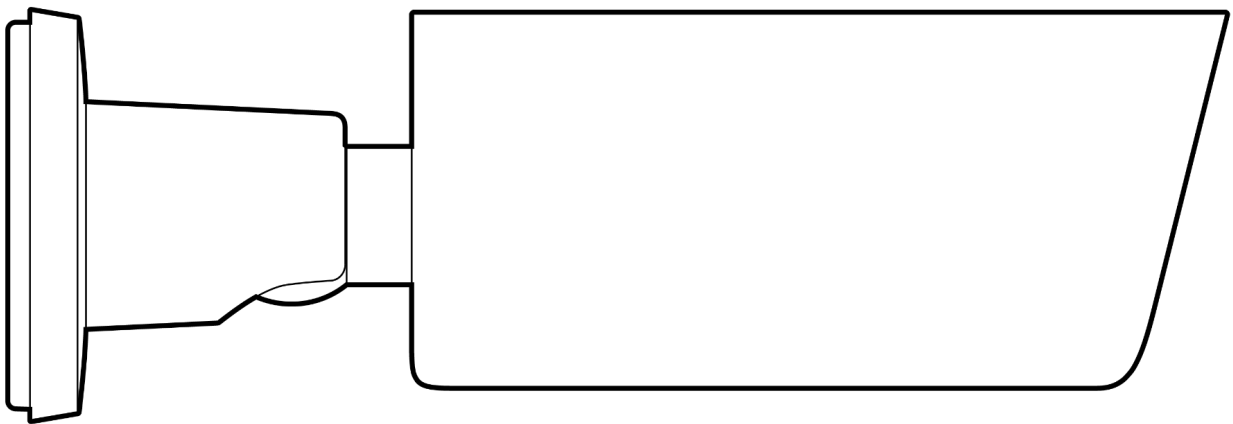


CB53-E Wide Angle Outdoor 5MP Bullet Camera

CB53-TE Telephoto Outdoor 5MP Bullet Camera

CB63-E Wide Angle Outdoor 4K Bullet Camera

CB63-TE Telephoto Outdoor 4K Bullet Camera



Document Details

Version

V1.0 20260507

(V1.0 published 20260507)

Firmware

Firmware version can be verified on Verkada
Command command.verkada.com.

Product Models

This install guide pertains to models:

- CB53-256E-HW
- CB53-512E-HW
- CB53-768E-HW
- CB53-1TB-E-HW
- CB53-2TB-E-HW
- CB63-512E-HW
- CB63-1TB-E-HW
- CB63-2TB-E-HW
- CB63-3TB-E-HW
- CB53-256TE-HW
- CB53-512TE-HW
- CB53-768TE-HW
- CB53-1TBTE-HW
- CB53-2TBTE-HW
- CB63-512TE-HW
- CB63-1TBTE-HW
- CB63-2TBTE-HW
- CB63-3TBTE-HW
- CB53-256E-HW-G
- CB53-512E-HW-G
- CB53-768E-HW-G
- CB53-1TB-E-HW-G
- CB53-2TB-E-HW-G
- CB63-512E-HW-G
- CB63-1TB-E-HW-G
- CB63-2TB-E-HW-G
- CB63-3TB-E-HW-G
- CB53-256TE-HW-G
- CB53-512TE-HW-G
- CB53-768TE-HW-G
- CB53-1TBTE-HW-G
- CB53-2TBTE-HW-G
- CB63-512TE-HW-G
- CB63-1TBTE-HW-G
- CB63-2TBTE-HW-G
- CB63-3TBTE-HW-G



© Copyright 2026 Verkada Inc. All rights reserved.

Verkada and the Verkada logo are registered trademarks or service marks of Verkada Inc. (“Verkada”). All other trademarks are the property of their respective owners.

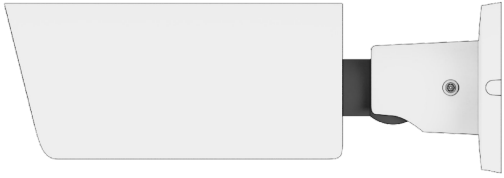
Verkada may make changes to this document at any time without notice. The information presented herein may be inaccurate or outdated, and Verkada is under no obligation to maintain it. ALL INFORMATION IS PROVIDED “AS-IS” AND WITHOUT ANY WARRANTIES, IMPLIED, EXPRESS, OR OTHERWISE. VERKADA DISCLAIMS LIABILITY FOR ALL DAMAGES, INCLUDING WITHOUT LIMITATION ANY DIRECT, INDIRECT, SPECIAL, INCIDENTAL, PUNITIVE, OR CONSEQUENTIAL DAMAGES, ARISING OUT OF USE OF THIS DOCUMENT.

Any intellectual property rights relating to Verkada products are and shall remain Verkada’s exclusive property. Use of any Verkada product is subject to Verkada’s end user agreement or other executed agreement with Verkada. No license, either expressed or implied, to use or distribute any Verkada product is granted under this document.

This document may not be sold, resold, licensed or sublicensed and may not be transferred without Verkada’s prior written consent. No part of this document may be reproduced in whole or in part without the express written consent of Verkada.



What's in the Box



Outdoor Bullet Camera



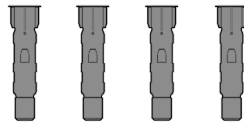
Mount Plate
(Attached to camera)



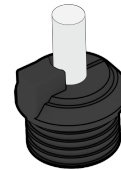
T25 Security Torx L-key



Wall Screws (4 pcs)
Length: 25mm Size: #8
Drive: #2 Phillips



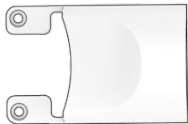
Wall Anchors (4 pcs)
Diameter: 1/4" Drill



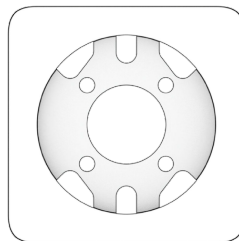
Cable Gland (1 pc)
Size: 5.0-6.5mm
(Attached to camera)



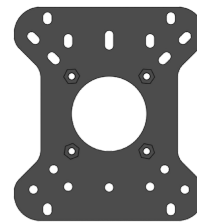
Cable Gland (1 pc)
Size: 6.5-7.5mm



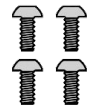
Conduit Adapter



**Junction Box
Adapter Cover**



**Junction Box
Adapter Plate**



**Junction Box
Adapter Screws** (4 pcs)
Size: M4 x 6mm
Drive: #2 Phillips

What you'll need

- A smartphone or laptop
- 1/4 inch (6.5mm) drill bit for wall anchors (if using mount plate)
- 1/8 inch (3mm) drill bit for pilot holes (if using mount plate)
- A Cat5 or Cat6 Ethernet cable with a 0.2-0.3 inch diameter (5-7.5mm)

Connect

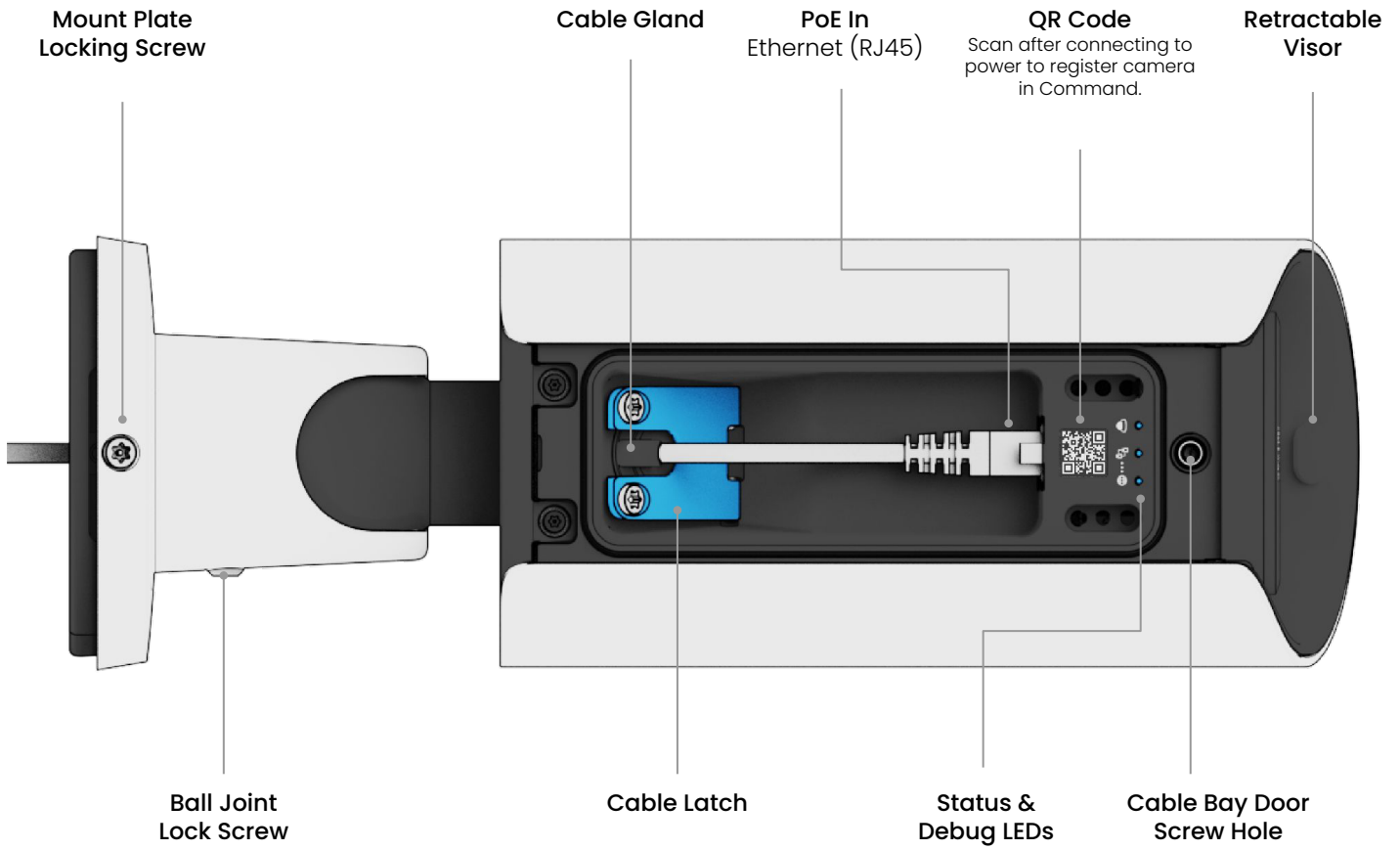
For easy registration and setup, scan the QR code on the product.

If you prefer to manually register your product, please proceed to:

verkada.com/start



Overview



Mount Plate Details

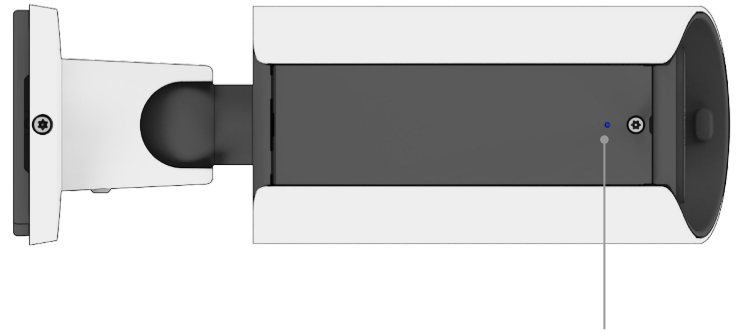
- A Wall Mount
- F European Junction Box



Exterior LED Behavior

General operation

- **Solid Blue**
Camera is running, connected, and recording data.
- **Solid Orange**
Camera is on and booting up.
- ☀️ **Flashing Orange**
Camera is updating firmware.
- ☀️ **Flashing Red**
Specific error, see “Network errors” below.
- **Solid Red**
Contact support.



Outer Status LED

Network errors

When the camera's bottom cover is on, an error will be communicated through the outer Status LED, which will flash a specific number of times depending on the error state.

1 Red - No IP Address

Camera has not received an IP address.

2 Red - Duplicate IP

Camera has detected duplicate IP addresses on the LAN.

3 Red - No Gateway

Camera is not able reach the configured Gateway.

4 Red - No Switch

Camera is connected with PoE, but unable to connect to the Switch.



Example of **5 Red** flashes on Outer Status LED

5 Red - DNS error

Camera is not able to resolve Verkada hostnames.

6 Red - NTP Error

Camera is not able to receive a response from the NTP Server.

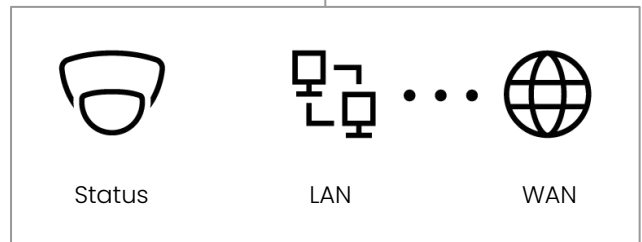
7 Red - Not Connected to Command

Verkada endpoints are not reachable after boot up.

Interior LED Behavior

General operation

- **Solid Blue**
Camera is running, connected, and recording data.
- **Solid Orange**
Camera is on and booting up.
- ☀️ **Flashing Orange**
Camera is updating firmware.
- 🔴 **Flashing Red**
Specific error, see "Network errors" below.
- **Solid Red (x3)**
Contact support



Network errors (Interior 'Debug' LEDs)

When the camera's bottom door is removed, the specific error will be communicated locally on the LAN or WAN debug LED, while the device Status LED will show solid red.

🔗 LAN errors

1 Red - No IP Address

Camera has not received an IP address.

2 Red - Duplicate IP

Camera has detected duplicate IP addresses on the LAN.

3 Red - No Gateway

Camera is not able reach the configured Gateway.

4 Red - No Switch

Camera is connected with PoE, but unable to connect to the Switch.



Example of **2 Red** flashes on LAN Debug LED

🌐 WAN errors

1 Red - DNS error

Camera is not able to resolve Verkada hostnames.

2 Red - NTP Error

Camera is not able to receive a response from the NTP Server.

3 Red - Not Connected to Command

Verkada endpoints are not reachable after boot up.



Preparation

Connect Device

Note: This step can be done after mounting, although registering the product first will ensure it is in working order prior to mounting.

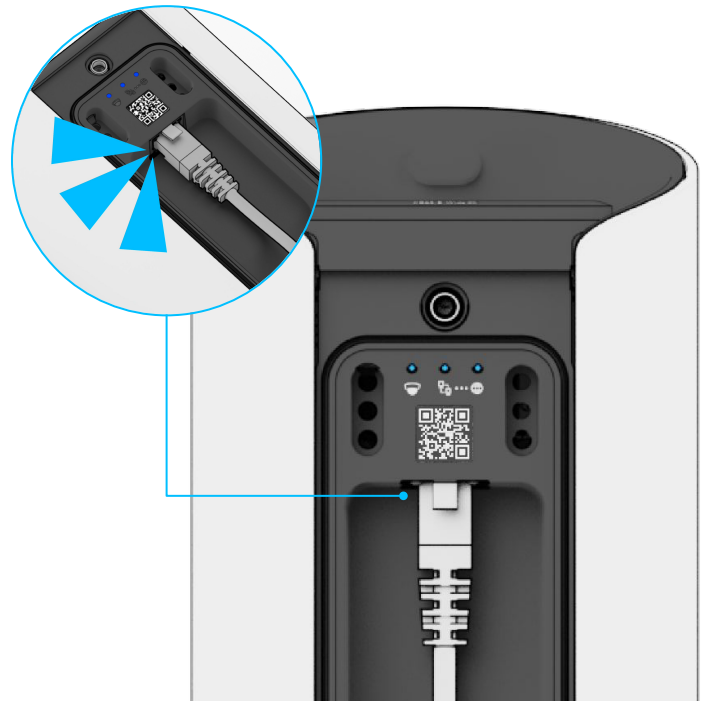
Connect the Bullet Camera to your network using the Ethernet port located behind the cable bay door.

For easy registration and setup, scan the QR code on the product.

If you prefer to manually register your product, please proceed to:

verkada.com/start

Enter the serial number printed on the back of the device, the packaging, or the order number.

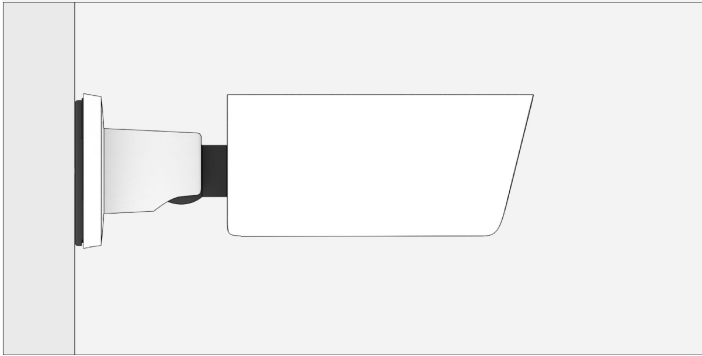


Installation

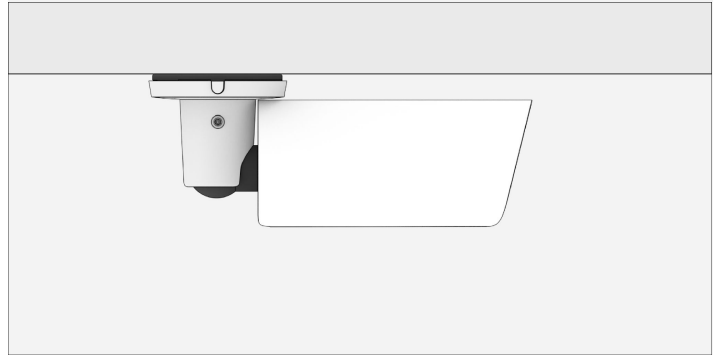
Placement

Keep the camera 8-10 feet above the ground.

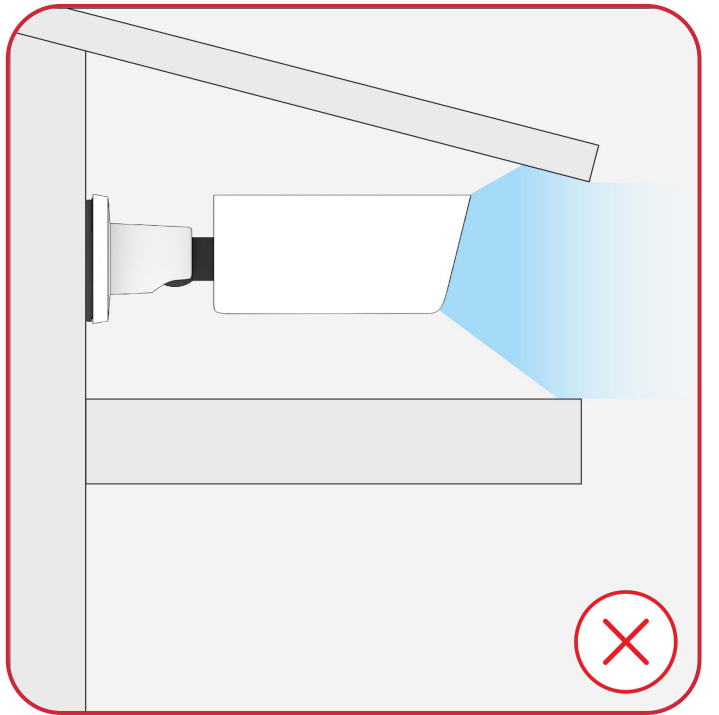
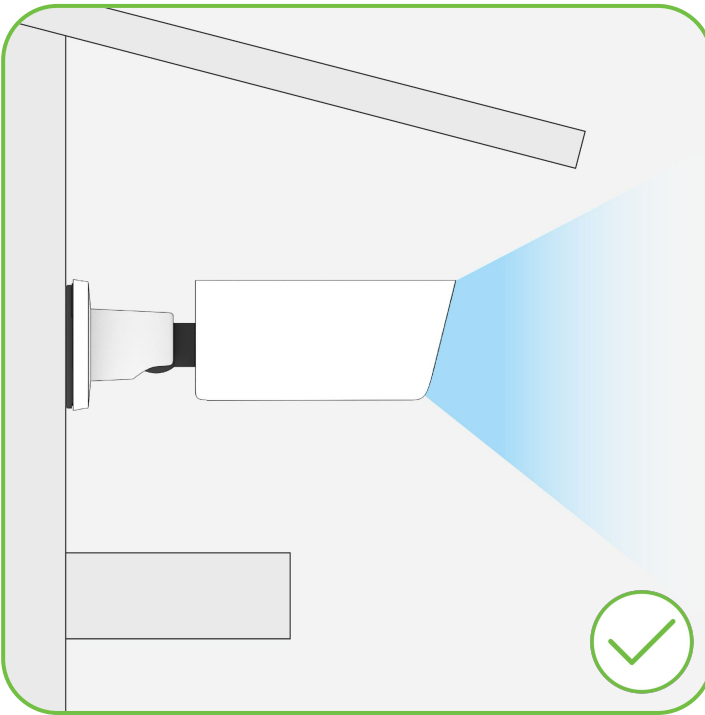
Wall Mounting Position



Ceiling Mounting Position



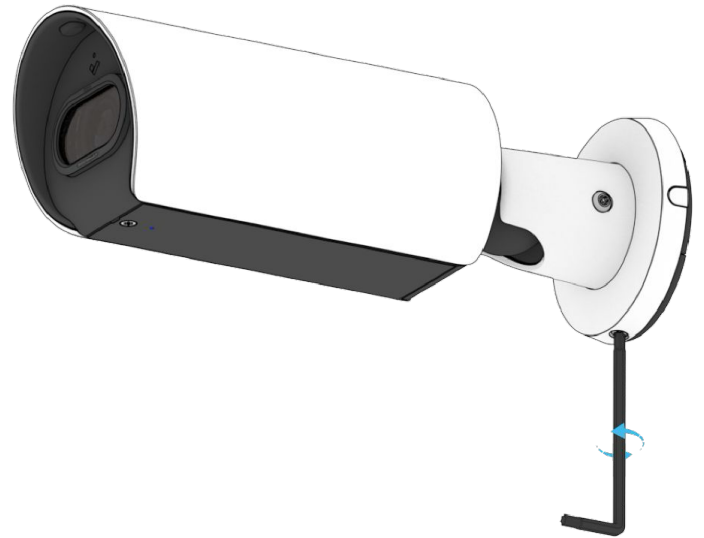
For best night vision, avoid overhangs or obstructions. These may reflect the camera's IR illumination and reduce image clarity in night mode.



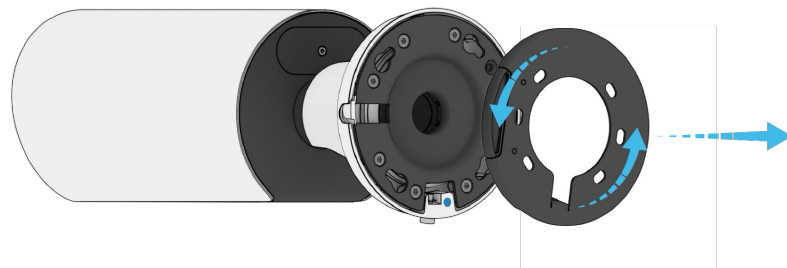
Installation

Preparation

Use the provided T25 L-key to loosen the mount plate locking screw at the edge of the camera's base.



Twist the Mount Plate counter-clockwise to separate it from the camera.



Installation

Mounting 1/7

For mounting directly to a wall or ceiling:

Use the mount plate as a template to mark mounting holes and the the cutout for the cable.

Drill 5/64 inch (2mm) pilot holes.

If using wall anchors, drill 1/4 inch (6mm) pilot holes.

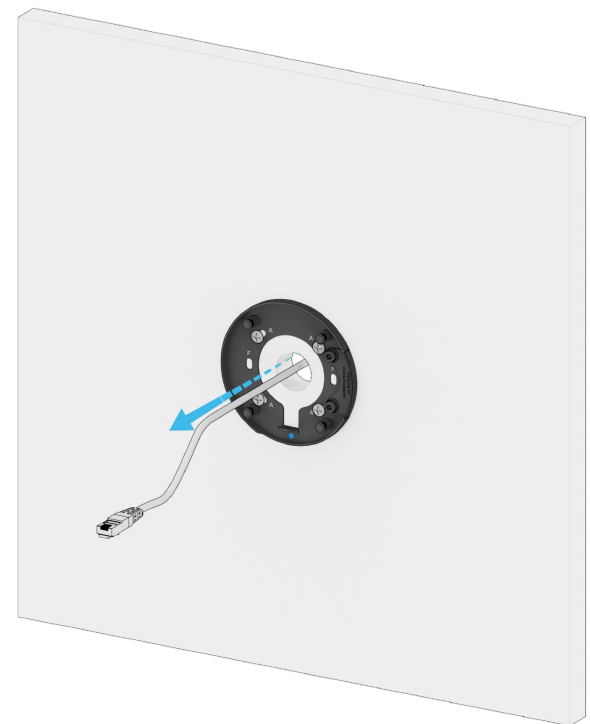
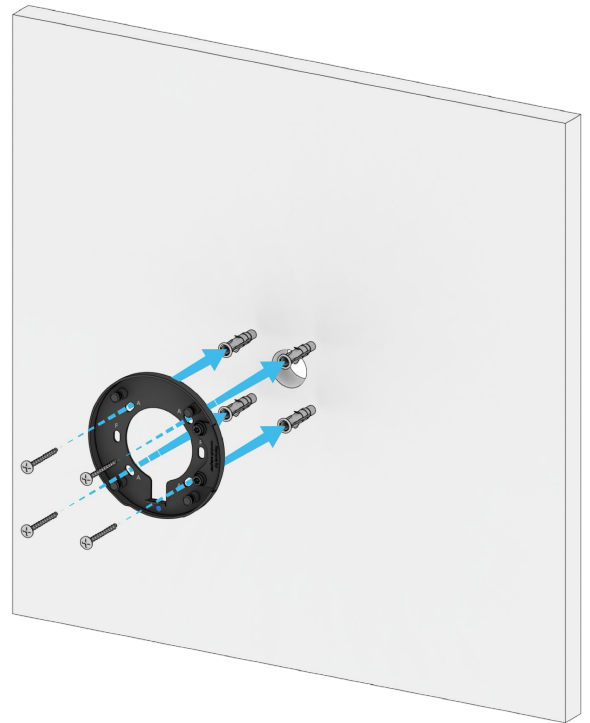
For wood or metal, drill 1/8 inch (3mm) pilot holes. Drive mounting screws directly into the pilot holes.

For drywall or masonry, drill 1/4 inch (6mm) holes. Insert plastic anchors into holes and drive mounting screws into anchors.

If routing through the Conduit Adapter, refer to the *Assembling the Conduit Adapter* section.

If mounting to ACC-MNT-SJBOX-1, refer to the *Mounting on Verkada ACC-MNT-SJBOX-1* section.

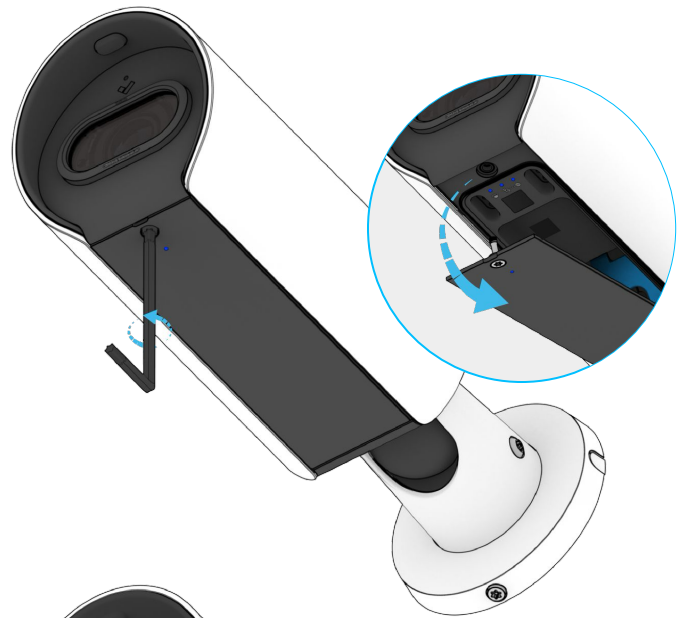
Lead the Ethernet cable through the wall and the opening on the Mount Plate.



Installation

Mounting 2/7

Use the T25 L-key to loosen the captive cable bay door screw. Set the door aside.



Using the T25 L-key, loosen the captive cable latch screws. Open the latch.

Remove the rubber Cable Gland and set it aside.



Lead the Ethernet cable through the neck of the ball joint. This is easiest when the base and body of the camera are aligned as shown.



Installation

Mounting 3/7

Thread the Ethernet cable through the cable latch opening.

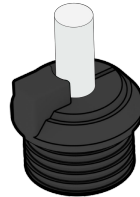
Plug the Ethernet cable into the RJ45 port on the camera.



Attention

Attach the correct Cable Gland onto the cable.

The sizes offered are 5.0-6.5mm or 6.5-7mm.

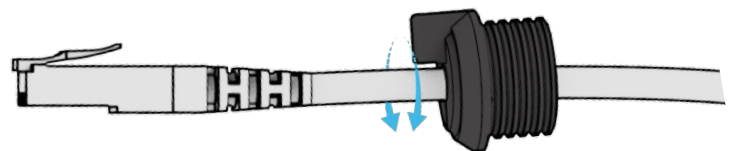


Size: 5.0-6.5mm
(Attached to camera)



Size: 6.5-7.5mm

Select the appropriate sized Cable Gland and wrap it around the Ethernet cable.



Installation

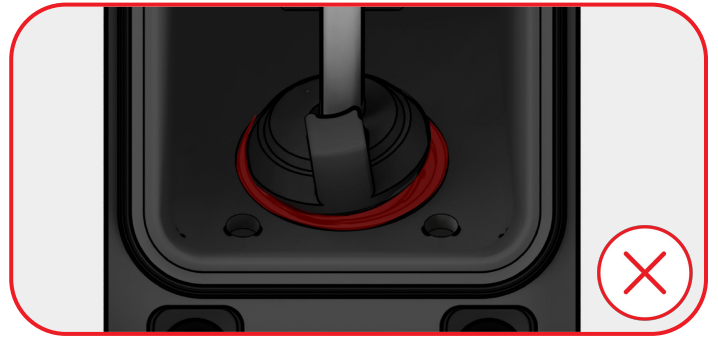
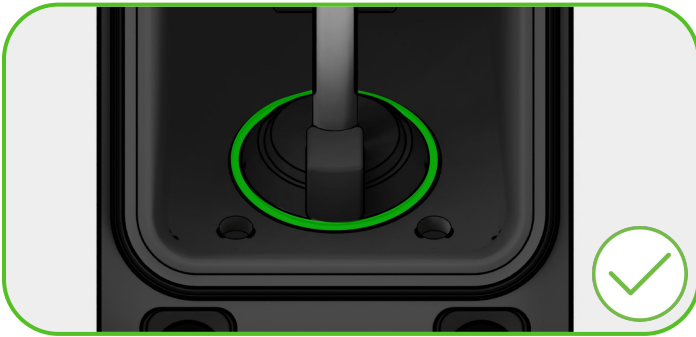
Mounting 4/7

With the Ethernet cable connected to the camera, press the Cable Gland into the Cable Gland hole.

In case of cable slack, pull the excess Ethernet cable from the rear of the camera through the Cable Gland.



Ensure that the Cable Gland is firmly in place with no gaps or unevenness.



Make sure the raised section of the Cable Gland is positioned between the latch screws. Incorrect installation may result in water ingress that could damage the device.



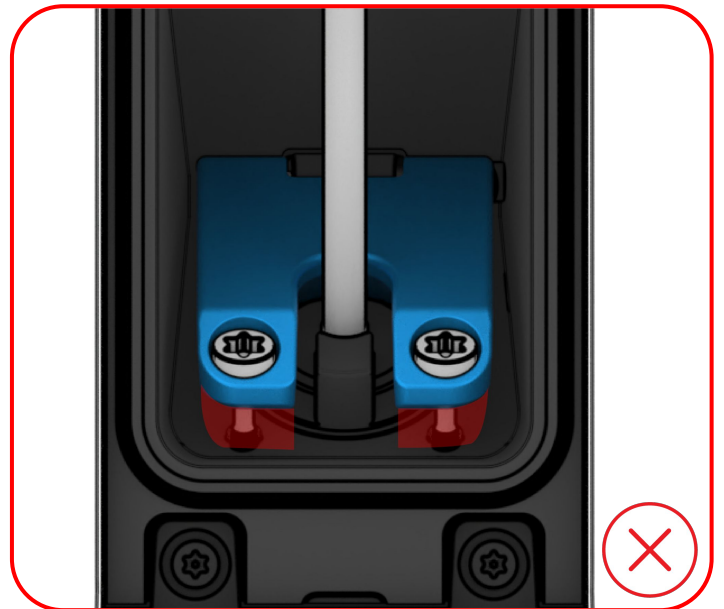
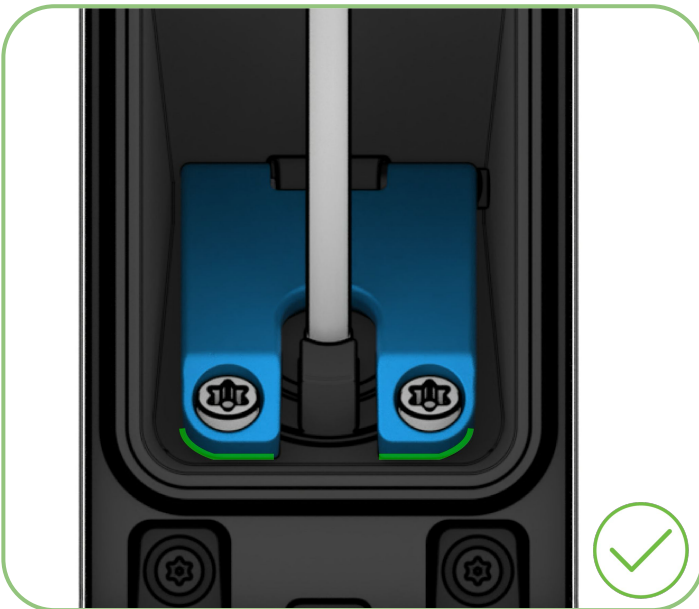
Installation

Mounting 5/7

Ensure that the cable and Cable Gland are snug, then close the latch.



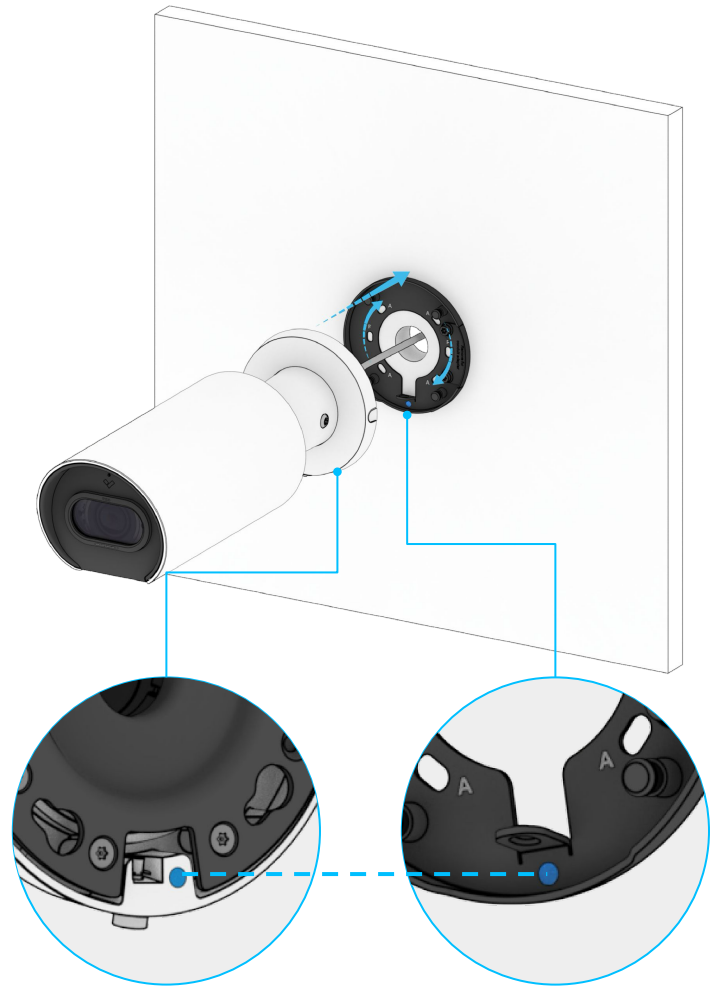
Once the latch is fully down and closed, tighten the security screw.



Installation

Mounting 6/7

To mount the Bullet Camera, align the blue dots on the Mount Plate and the base, then rotate the camera clockwise.



Tighten the Mount Plate locking screw using the T25 L-key to secure the camera to the Mount Plate.



Installation

Mounting 7/7

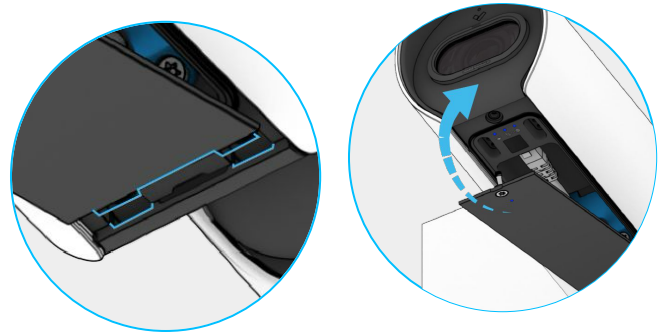
Remove all protective film from the front of the Camera.

If additional weather protection is needed, the visor can be extended using the notch on the underside of the hood.

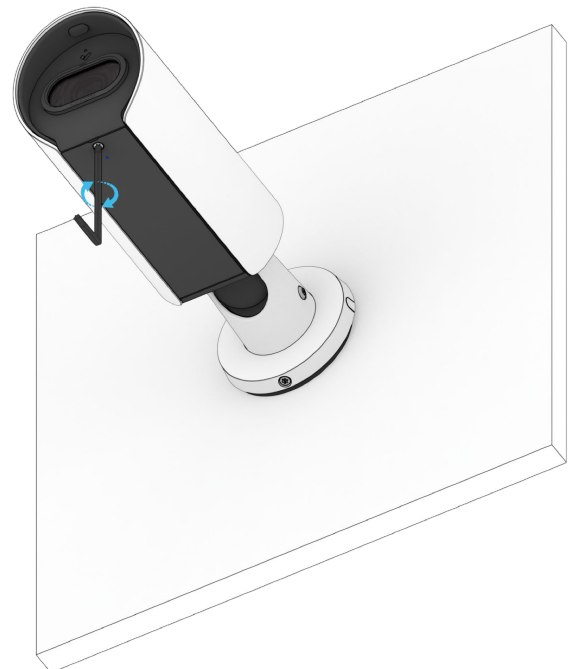
Zoom level may need to be adjusted on Command to prevent visor interference in the camera's field of view.



Replace the cable bay door by aligning the door tabs and swing the door close.



Tighten the captive door screw using the T25 L-key.

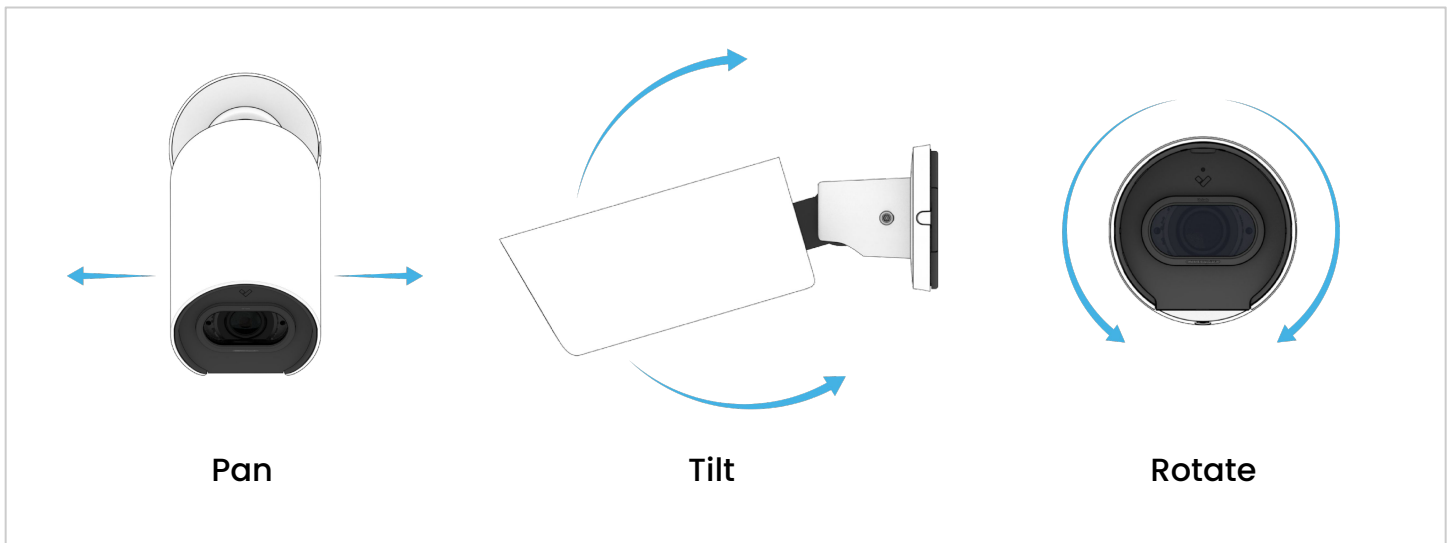
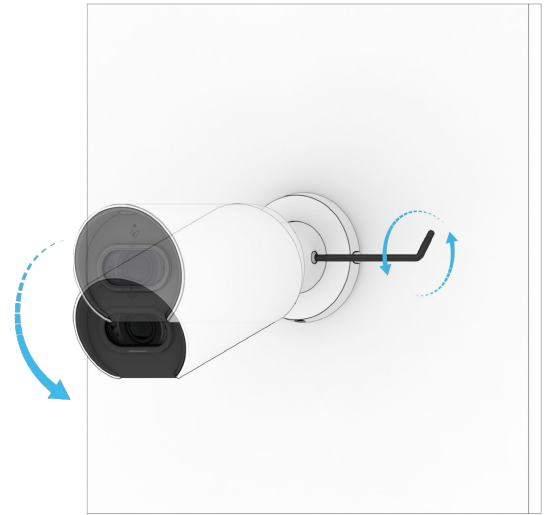


Installation

Adjusting

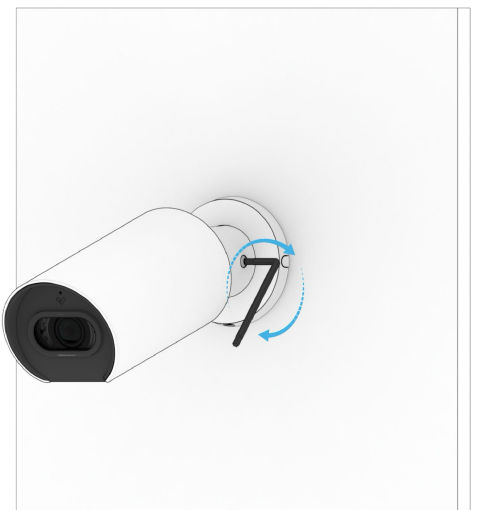
Loosen the ball joint lock screw to adjust the angle of the camera.

Adjust your camera to the desired viewing angle. Use the live stream on Command to confirm image orientation. If needed, the image can be flipped 180 degrees online on Command.



To tighten the ball joint, use the T25 L-key to turn the screw on the side of the ball joint.

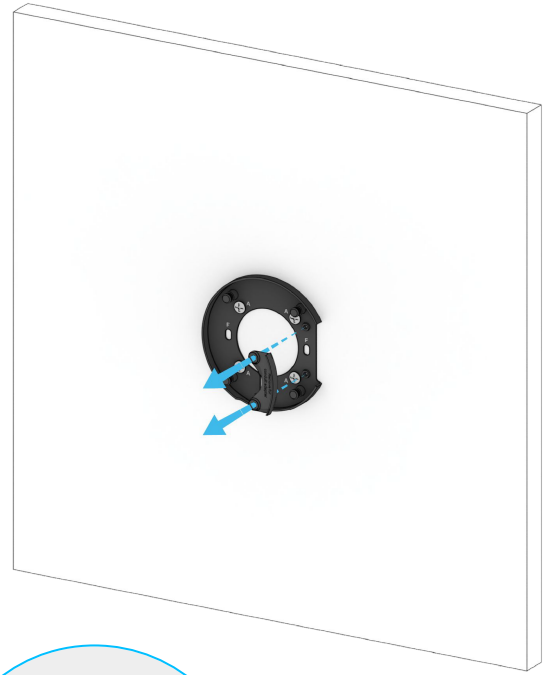
To fully lock the camera in place, use the longer arm of the L-key to tighten the screw further.



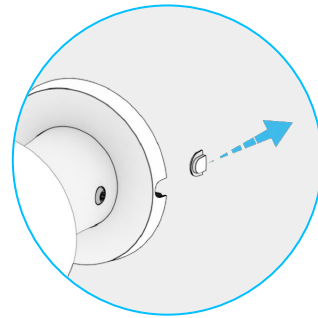
Installation

Assembling the Conduit Adapter (Optional)

Use a #2 Phillips screwdriver to remove the screws holding the plastic bracket in place. Set the screws aside.

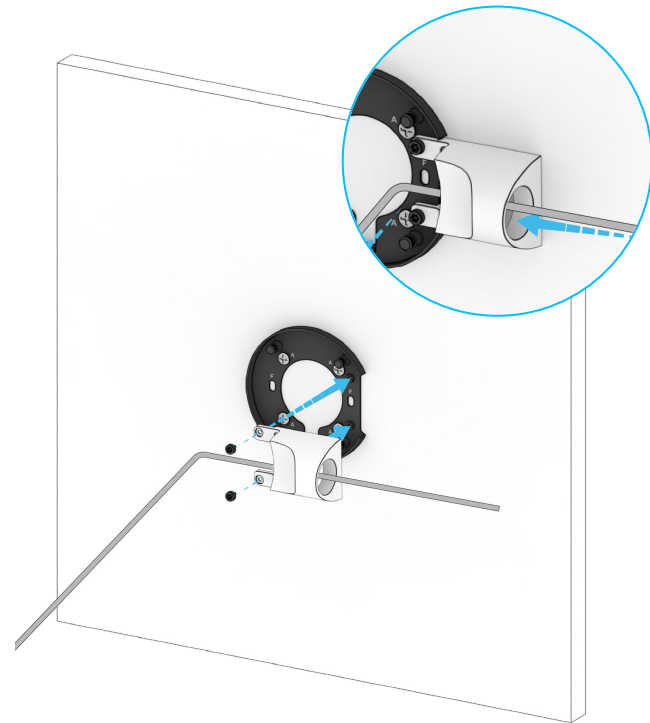


Use a #2 Phillips screwdriver to remove the mouse hole cover on the base of the Camera.



Thread the Ethernet cable through the Conduit Adapter. Use the #2 Phillips screws to fasten the Conduit Adapter onto the Mount Plate.

Proceed with the rest of the installation.



Installation

Mounting on Verkada ACC-MNT-SJBOX-1 (Optional)

For wood or metal, drill 1/8 inch pilot holes. Drive mounting screws directly into the pilot holes using hole pattern A of the Junction Box.

Feed Ethernet cable through the center of the Junction Box before fully securing it to the mounting surface.

Leave enough slack to safely handle the camera during cable gland installation.

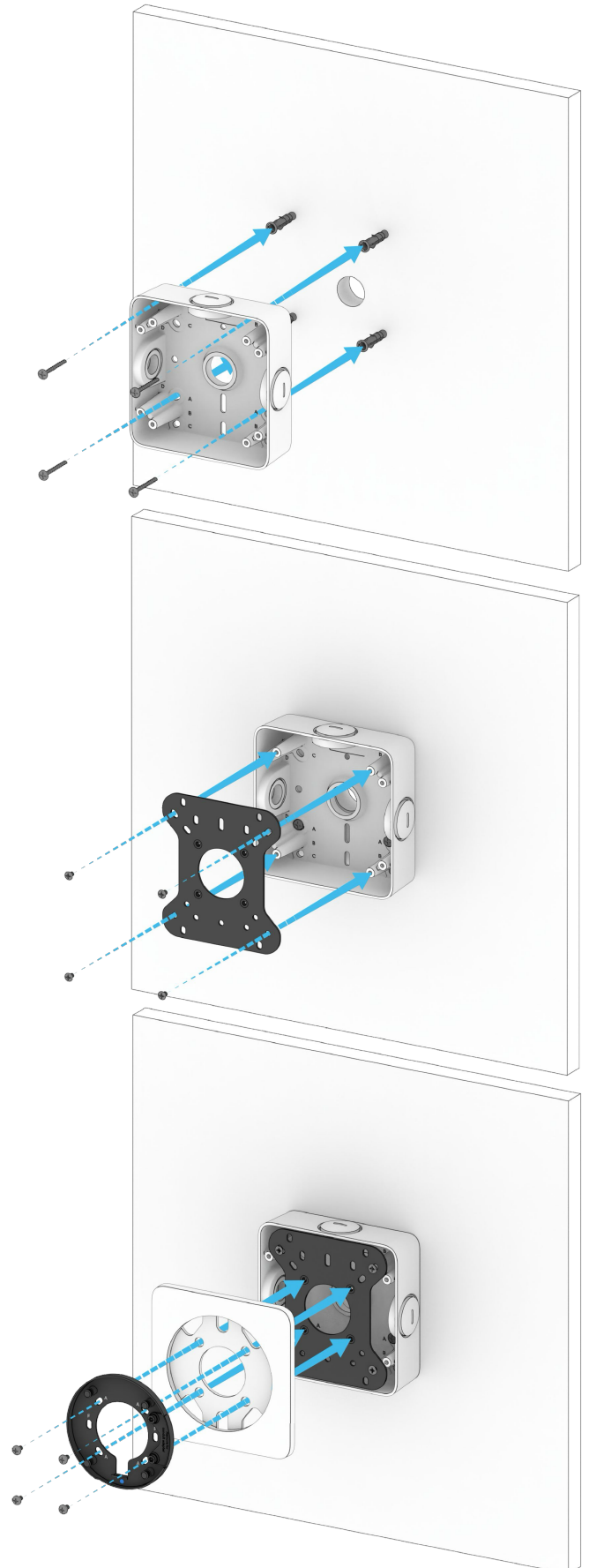
For drywall or masonry, separate wall anchors may be required.

For additional information, see the [ACC-MNT-SJBOX-1 Install Guide](#).

Align mounting features on the Junction Box Adapter Plate with the mounting pegs on the inside of the Junction Box utilizing hole pattern B.

Use the machine screws provided with ACC-MNT-SJBOX-1 to fasten the adapter plate to the Junction Box.

Attach the Junction Box Adapter Cover and Camera Mount Plate to the Adapter Plate with the included Junction Box Adapter Screws.

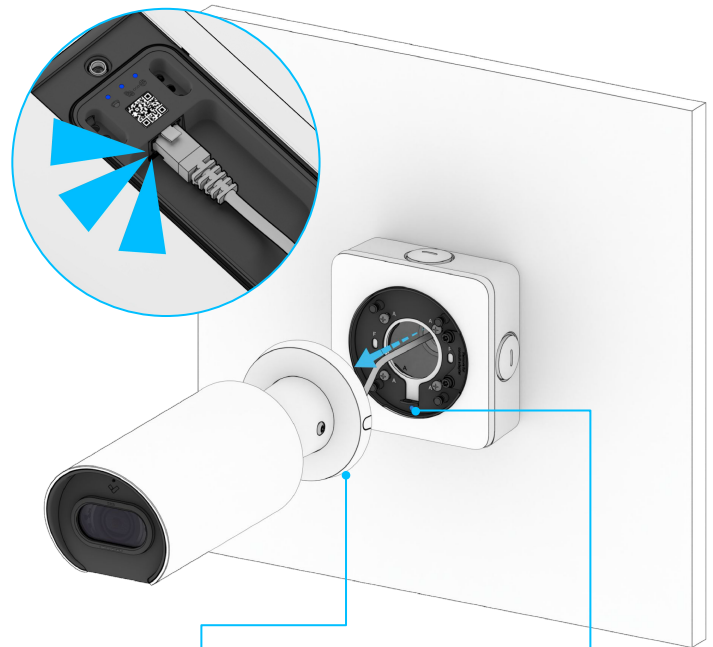


Installation

Mounting on Verkada ACC-MNT-SJBOX-1 (Optional) 2/2

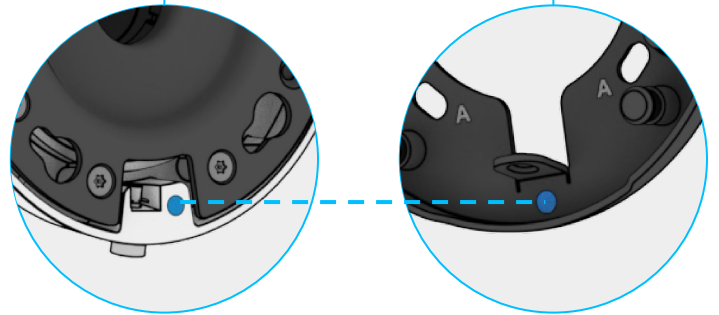
Connect the Ethernet cable to the camera.

Please note: Follow instructions earlier in install guide to ensure cable is assembled correctly.

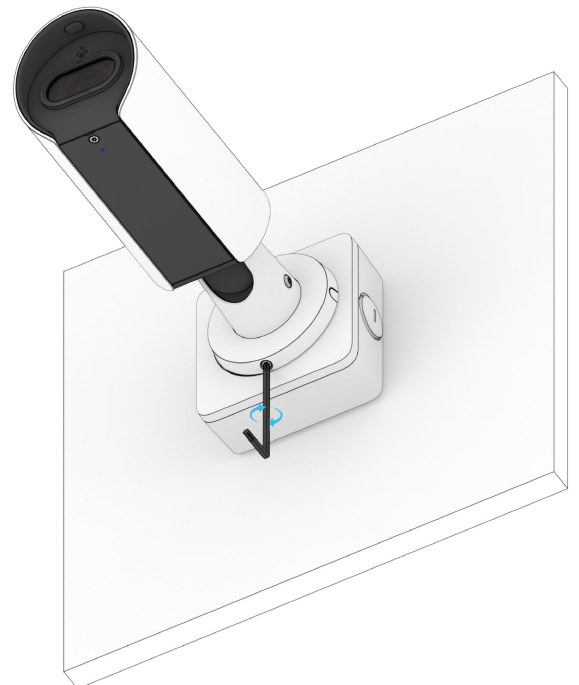


Feed excess cable slack through Junction Box.

Align the blue dots on the Mount Plate and camera base, engage the mounting pegs, and twist clockwise.




To secure, tighten the mount plate screw using the T25 L-key.



Appendix

Compliance

<p>Caution</p>	<ol style="list-style-type: none"> 1. Maintenance and repair work must always be carried out by qualified technical personnel. Disconnect power from the unit when performing a maintenance task. 2. Wiring methods used for the connection of the equipment to earth shall be in accordance with the National Electrical Code, ANSI/NFPA 70, and the Canadian Electrical Code, Part 1, CSA C22.1. 3. The product must be installed and protected in a location that is not easily accessible and is away from impacts or heavy vibration. 4. The device is only to be connected to PoE networks without routing to outside plants. 5. If powered by a power adapter, the adapter should be properly grounded. 6. Please contact certified dealers for power adapters.
<p>FCC Compliance</p>	<p>This device complies with Part 15 of the FCC Rules. Operation is subject to the following two conditions: (1) This device may not cause harmful interference, and (2) this device must accept any interference received, including interference that may cause undesired operation.</p> <p>This equipment has been tested and found to comply with the limits for a Class B digital device, pursuant to Part 15 of the FCC Rules. These limits are designed to provide reasonable protection against harmful interference in a residential installation. This equipment generates, uses and can radiate radio frequency energy and, if not installed and used in accordance with the instructions, may cause harmful interference to radio communications. However, there is no guarantee that interference will not occur in a particular installation. If this equipment does cause harmful interference to radio or television reception, which can be determined by turning the equipment off and on, the user is encouraged to try to correct the interference by one of the following measures:</p> <ul style="list-style-type: none"> -Reorient or relocate the receiving antenna. -Increase the separation between the equipment and receiver. -Connect the equipment into an outlet on a circuit different from that to which the receiver is connected. -Consult the dealer or an experienced radio/TV technician for help.
<p>ISED Compliance</p>	<p>This device complies with ISED's licence-exempt RSSs. Operation is subject to the following two conditions: (1) This device may not cause harmful interference, and (2) this device must accept any interference received, including interference that may cause undesired operation.</p> <p>Le présent appareil est conforme aux CNR d'ISED applicables aux appareils radio exempts de licence. L'exploitation est autorisée aux deux conditions suivantes : (1) le dispositif ne doit pas produire de brouillage préjudiciable, et (2) ce dispositif doit accepter tout brouillage reçu, y compris un brouillage susceptible de provoquer un fonctionnement indésirable.</p>
<p>IEC 62368-1</p>	<p>Use appropriate shielding or eye protection.</p> <div style="display: flex; align-items: center;">  <p>NOTICE IR emitted from this product.</p> </div>



Appendix
Support

Thank you for purchasing this Verkada product. If for any reason you're experiencing issues or need assistance, please contact our 24/7 Technical Support Team immediately.

Sincerely,
The Verkada Team
verkada.com/support

