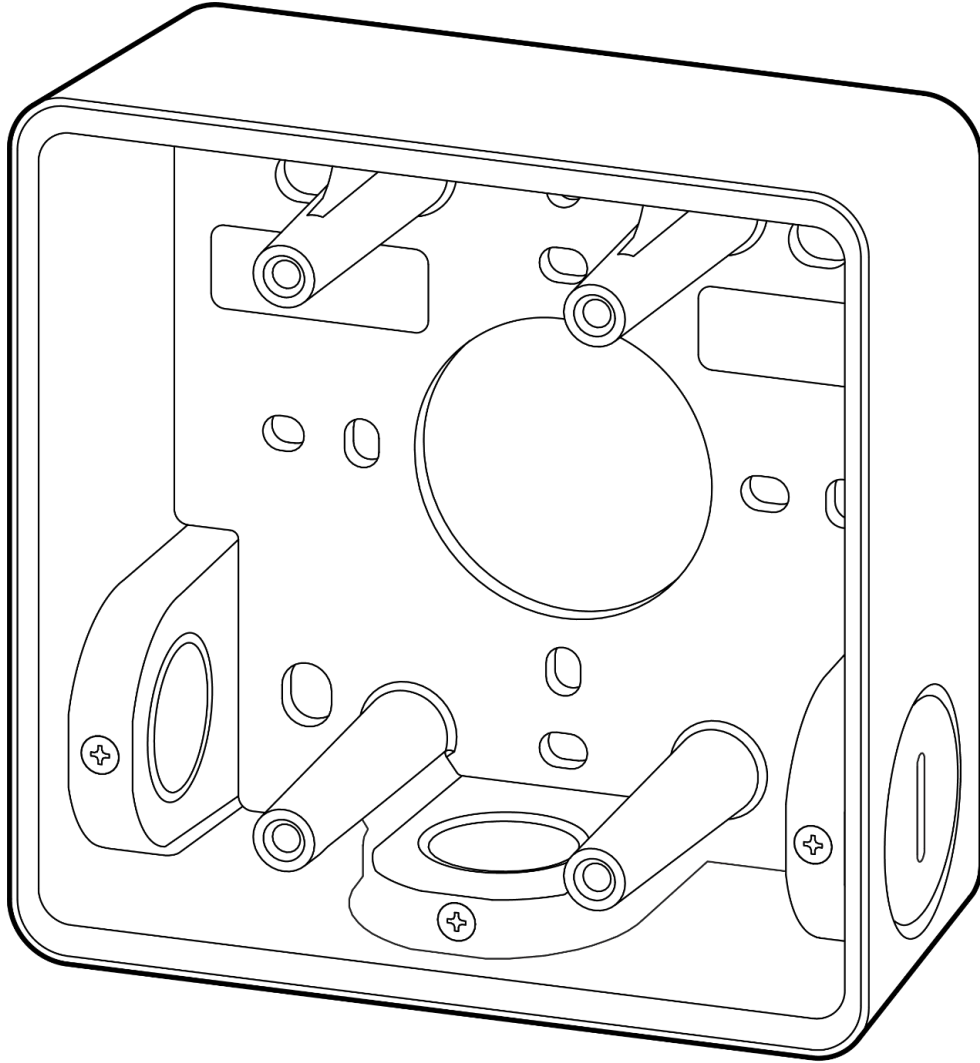


ACC-INT-TS-COND

Square Intercom Conduit Surface Mount



Document Details

Version

V1.0 20260108

(V1.0 published 20260108)

Firmware

Firmware version can be verified on Verkada Command
command.verkada.com.

Product Models

This install guide pertains to model ACC-INT-TS-COND.

© Copyright 2025 Verkada Inc. All rights reserved.

Verkada and the Verkada logo are registered trademarks or service marks of Verkada Inc. ("Verkada"). All other trademarks are the property of their respective owners.

Verkada may make changes to this document at any time without notice. The information presented herein may be inaccurate or outdated, and Verkada is under no obligation to maintain it. ALL INFORMATION IS PROVIDED "AS-IS" AND WITHOUT ANY WARRANTIES, IMPLIED, EXPRESS, OR OTHERWISE. VERKADA DISCLAIMS LIABILITY FOR ALL DAMAGES, INCLUDING WITHOUT LIMITATION ANY DIRECT, INDIRECT, SPECIAL, INCIDENTAL, PUNITIVE, OR CONSEQUENTIAL DAMAGES, ARISING OUT OF USE OF THIS DOCUMENT.

Any intellectual property rights relating to Verkada products are and shall remain Verkada's exclusive property. Use of any Verkada product is subject to Verkada's end user agreement or other executed agreement with Verkada. No license, either expressed or implied, to use or distribute any Verkada product is granted under this document.

This document may not be sold, resold, licensed or sublicensed and may not be transferred without Verkada's prior written consent. No part of this document may be reproduced in whole or in part without the express written consent of Verkada.



Introduction

What's in the Box



Conduit Surface Mount
(Foam Seal attached, do not remove)

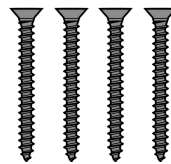


Steel Square-Neck Bolt (4 pcs)
Length: 0.5"

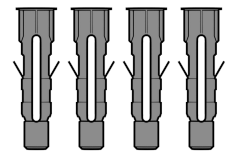


Hex Nut (4 pcs)
Size: 0.25"

Mounting Hardware #1

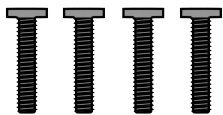


Wall Screws (4 pcs)
Length: 1" Drive: #2 Phillips



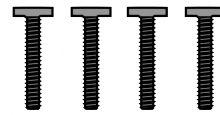
Wall Anchors (4 pcs)
Length: 1"

Mounting Hardware #2



Junction Box Screws #8-32 (4 pcs)
Length: 0.5" Drive: #2 Phillips

Mounting Hardware #4



Junction Box Screws #6-32 (4 pcs)
Length: 0.5" Drive: #2 Phillips

Mounting Hardware #3

What you'll need

- A TS12-N Intercom
- A #2 Phillips screwdriver or power drill with a #2 Phillips driver bit
- 1/4 inch (6.5mm) drill bit for wall anchors (if applicable)
- 1/8 inch (3mm) drill bit for pilot holes (if applicable)
- A Cat5 or Cat6 Ethernet cable with a 0.2-0.25 inch diameter (5-6.5mm)

Compatible Products

- TS12-N
- TS12-N-RB
- TS12-N-R2B



Overview



Hole Patterns

- C U.S. Single Gang Junction Box
- D Gooseneck Mount
- E EU Junction Box

Installation

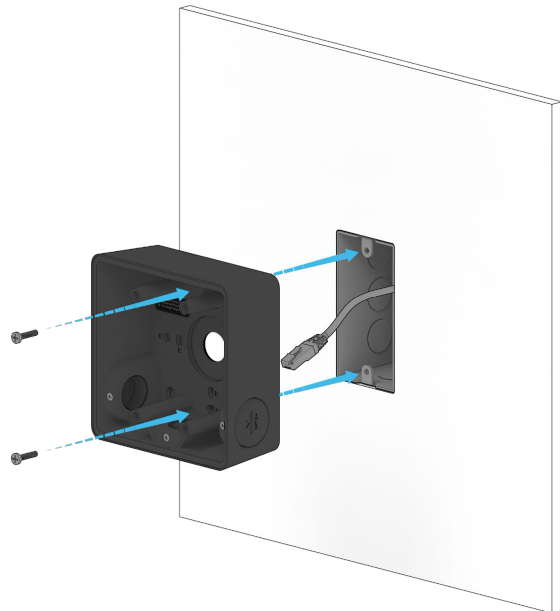
Mounting to Junction Box 1/3

Note: The sealing foam needs to stay on during the installation process.

Before install, pierce the sealing foam with screws or a screwdriver to create the needed thru-hole.



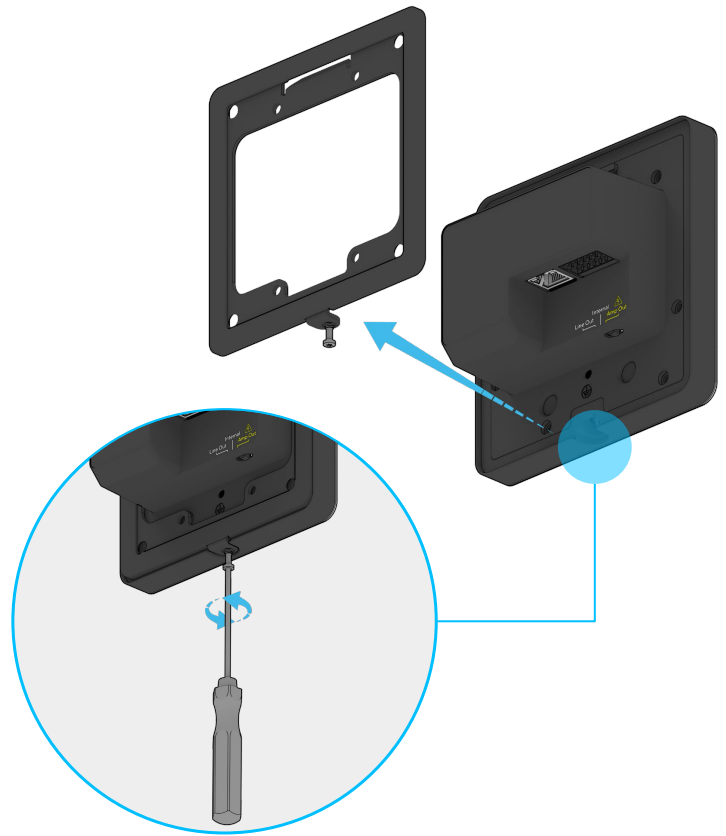
Follow the label instruction by using #6 or #8 screws to fix the Surface Mount Box on U.S Single Gang J-Box or U.K Single Gang J-Box.



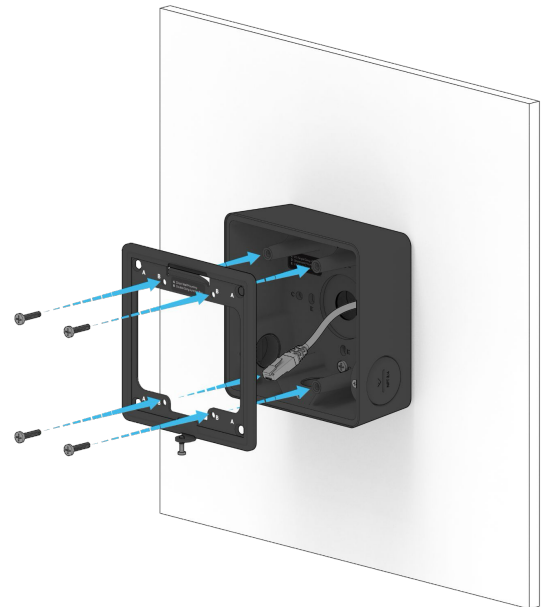
Installation

Mounting to Junction Box 2/3

Loosen the security screw and remove the mount plate from device.



Use the #8 screws to secure the wall mount plate onto the Surface Mount Box.



Installation

Mounting to Junction Box 3/3

Route the ethernet cable through the mount plate and plug it into the device.

Connect the TS12 to your network using the Ethernet port located behind the cable door on the device.

For easy registration and setup, scan the QR code on the product.

If you prefer to manually register your product, please proceed to:
verkada.com/start

Enter the serial number printed on the back of the device, the packaging, or the order number.

Hook the device onto the mount plate.

Tighten the security screw with the T10 Torx Security Screwdriver.

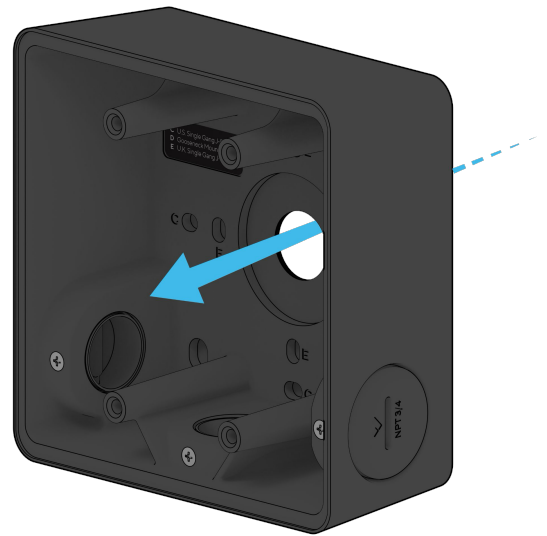


Installation

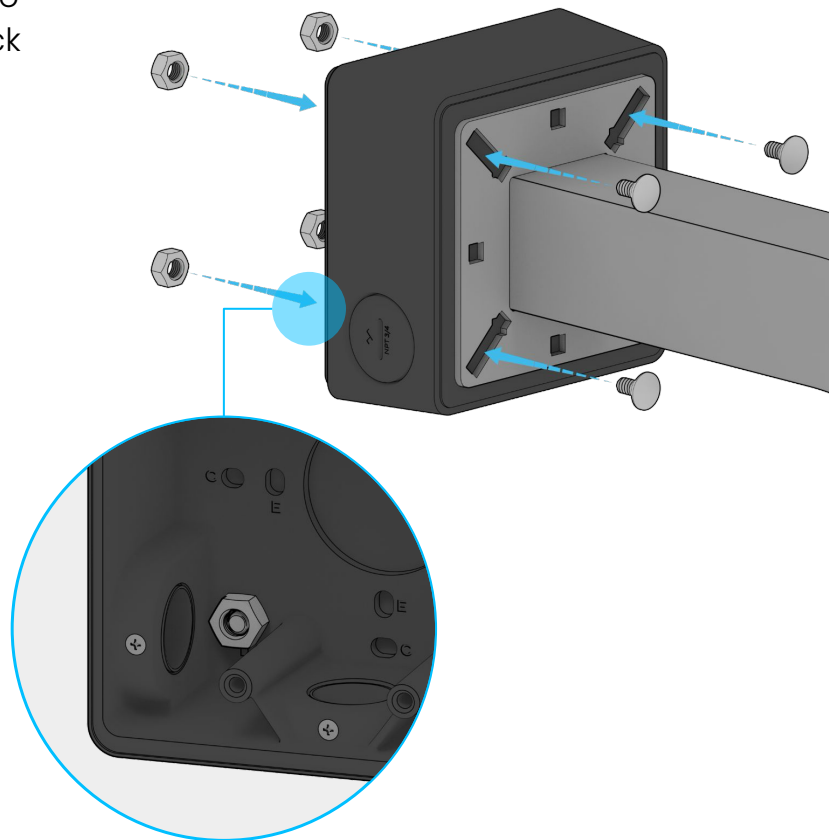
Mounting to Gooseneck Mount Stand 1/4

Note: The sealing foam needs to stay on during the installation process.

Before install, pierce the sealing foam with screws or a screwdriver to create the needed thru-hole.



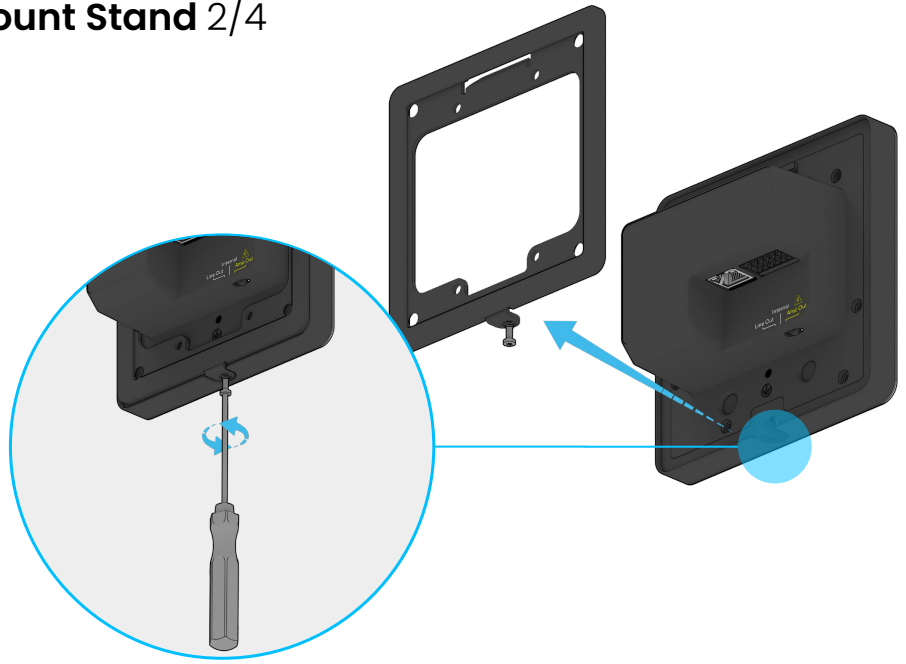
Follow the label instruction to use square-neck bolt screws and hex nut to fix the Surface Mount Box on Gooseneck Mount Stand, using the D hole pattern.



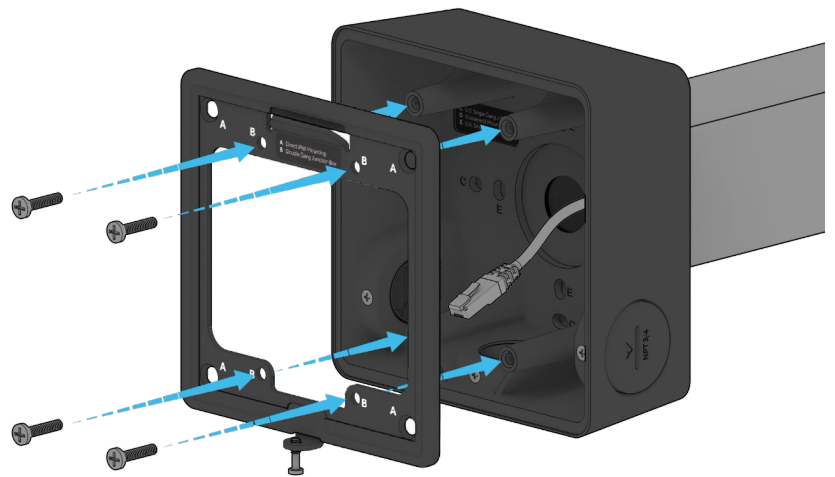
Installation

Mounting to Gooseneck Mount Stand 2/4

Loosen the security screw and remove the mount plate from device.



Use the #8 screws to secure the wall mount plate onto the Surface Mount Box.

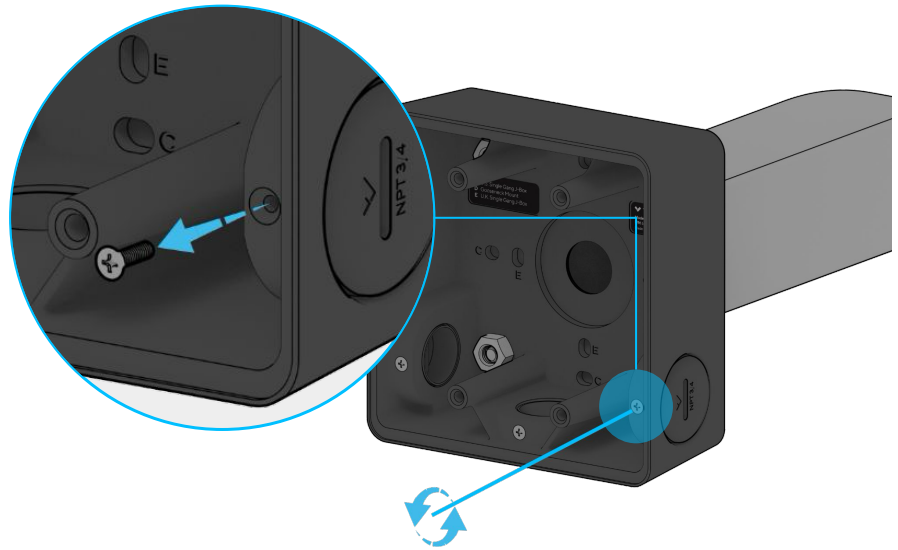


Installation

Mounting to Gooseneck Mount Stand 3/4

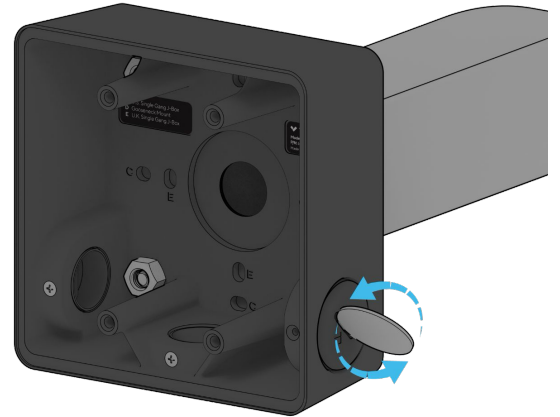
Select one of the three conduit holes that provides the best wire routing.

Loosen the top-side flat-head screw to release the plug rotation constraint.

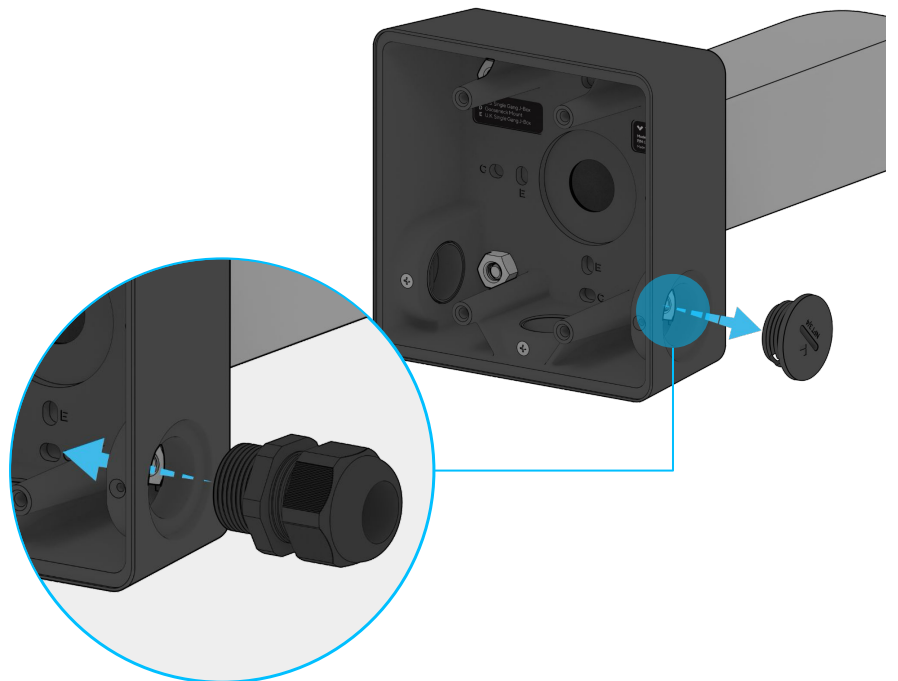


Using a flat tool or coin, rotate the NPT plug counterclockwise and remove it from the enclosure.

Route the wires or cables through the opening, then connect them to the TS12 terminal.



To ensure proper ingress protection, it is recommended to install a 3/4-inch NPT waterproof cable gland to prevent water or dust from entering the enclosure.



Installation

Mounting to Gooseneck Mount Stand 4/4

Route the Ethernet cable through the mount plate and plug it into the device.

Connect the TS12 to your network using the Ethernet port located behind the cable door on the device.

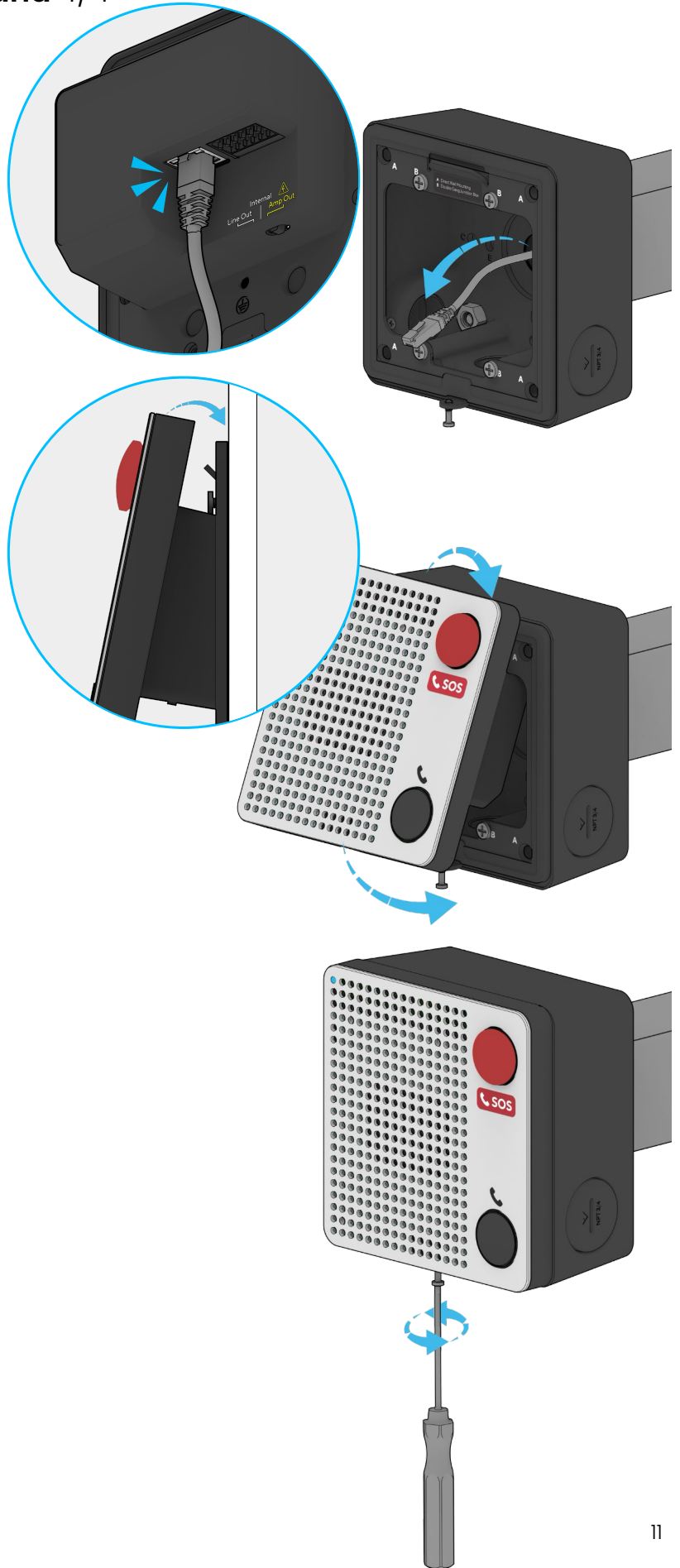
For easy registration and setup, scan the QR code on the product.

If you prefer to manually register your product, please proceed to:
verkada.com/start

Enter the serial number printed on the back of the device, the packaging, or the order number.

Hook the device onto the mount plate.

Tighten the security screw with the T10 Torx Security Screwdriver.



Appendix

Support

Thank you for purchasing this Verkada product. If for any reason you're experiencing issues or need assistance, please contact our 24/7 Technical Support Team immediately.

Sincerely,
The Verkada Team
verkada.com/support

