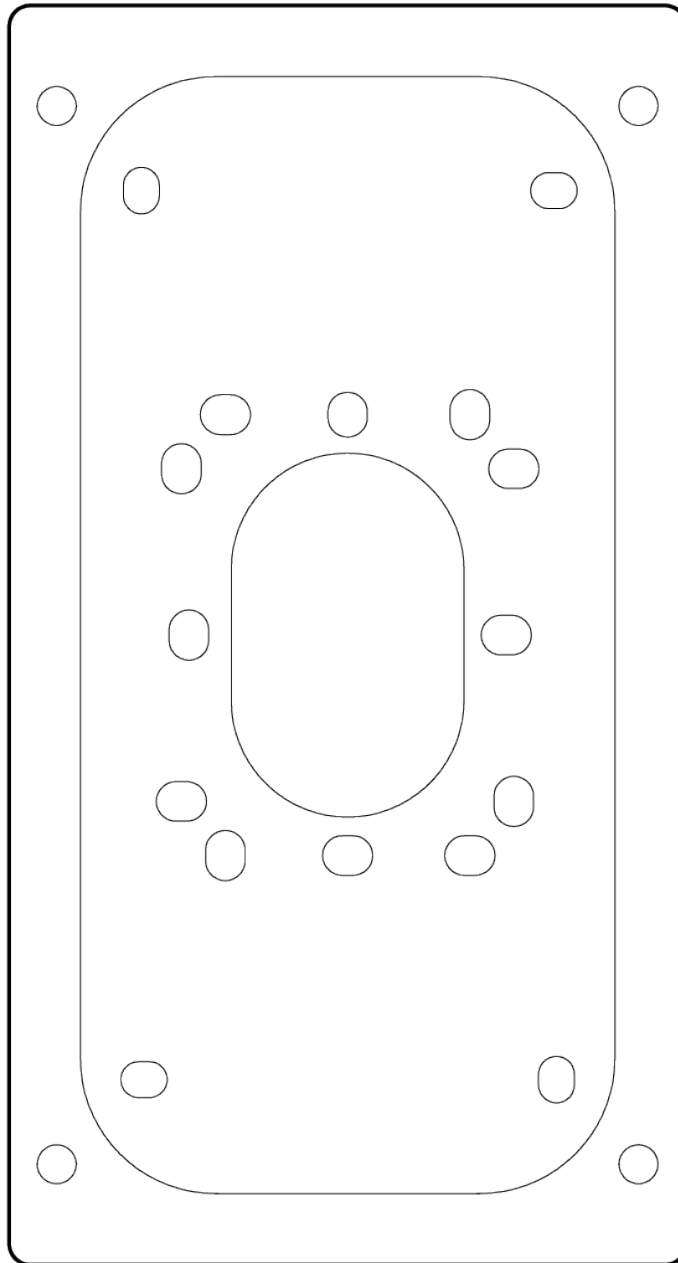


ACC-INT-SURF

Video Intercom Surface Mount Box



Document

Document Details

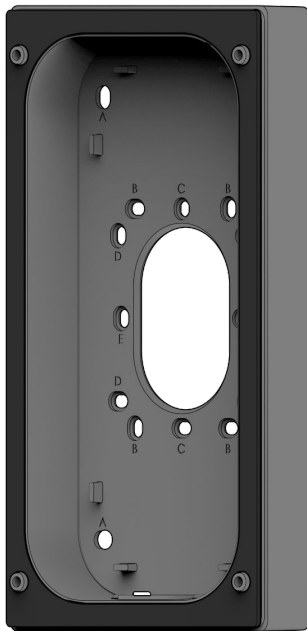
v1.0 (20230214)

(v1.0 first published 20230214)



Introduction

What's in the box



- 4x 6-32 x 3/4" button head screws
- 4x 8-32 x 3/4" button head screws
- 4x #10x1.5" wood screws
- 4x wall anchors
- Conduit adapter
- Drain hole plug

ACC-INT-SURF Video Intercom Surface Mount Box

Hole Patterns

- A Direct wall mounting
- B Double gang junction box
- C U.S. Single gang junction box
- D Octagonal Junction Box
- E U.K. Single gang junction box

What you'll need

- TD52 Video Intercom
- A #2 Phillips screwdriver or power drill with a #2 Phillips driver bit
- 1/2 inch (12.7mm) drill bit, or larger, for routing cable through wall
- 1/8 inch (3mm) drill bit for pilot holes

Compatible Products

- TD52 Video Intercom
- ACC-INT-HOOD
- ACC-POE-2WIRE



Installation

Mounting

For a solid material like wood or metal, drill 1/8 inch pilot holes. Drive mounting screws directly into the pilot holes using hole pattern A of the Surface Mount Box.

Feed Ethernet cable through the center of the Surface Mount Box before fully securing it to the mounting surface.

Leave enough slack to safely handle the TD52 Video Intercom during installation.

For drywall, plaster or masonry, separate wall anchors may be required.

For installation onto a junction box, use the corresponding mounting holes and provided machine screws.



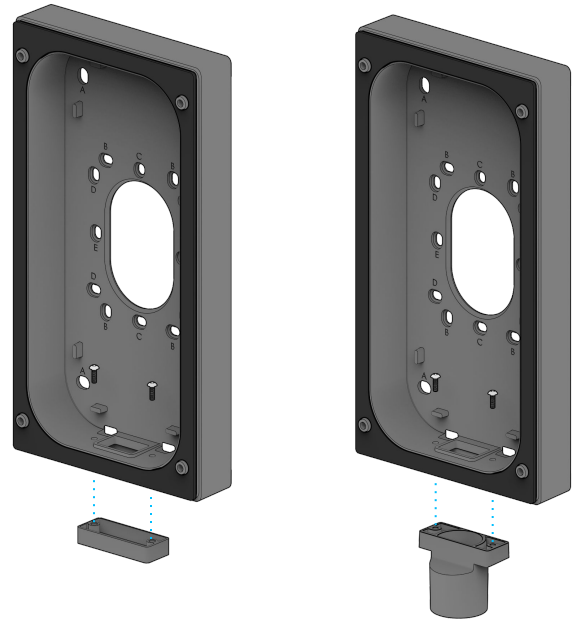
Attach the TD52 Video Intercom to the Surface Mount Box using the screws provided in the with the TD52.

For detailed mounting instructions related to Verkada TD52 Video Intercom, see its install guide



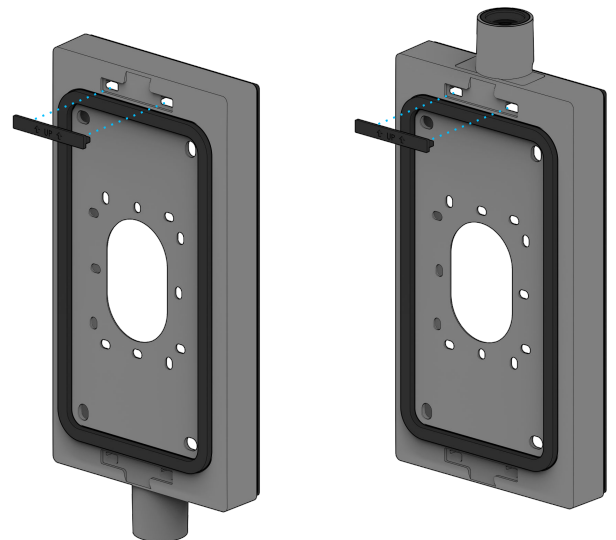
Mounting

To use the conduit adapter, loosen the screws and remove the conduit adapter cover from the bottom of the Surface Mount Box. Use the same screws to attach the conduit adapter in its place.



The Surface Mount Box is reversible and can be mounted with the conduit adapter facing upwards or downwards.

For installations with the conduit adapter facing upwards, remove the drain hole plug from the upper drain holes and place it into the drain holes on the opposite side of the Surface Mount Box. When installed, the drain hole plug should always be on the top side of the device.



Appendix

Support

Thank you for purchasing this Verkada product. If for any reason you're experiencing issues or need assistance, please contact our 24/7 Technical Support Team immediately.

Sincerely,
The Verkada Team
verkada.com/support

