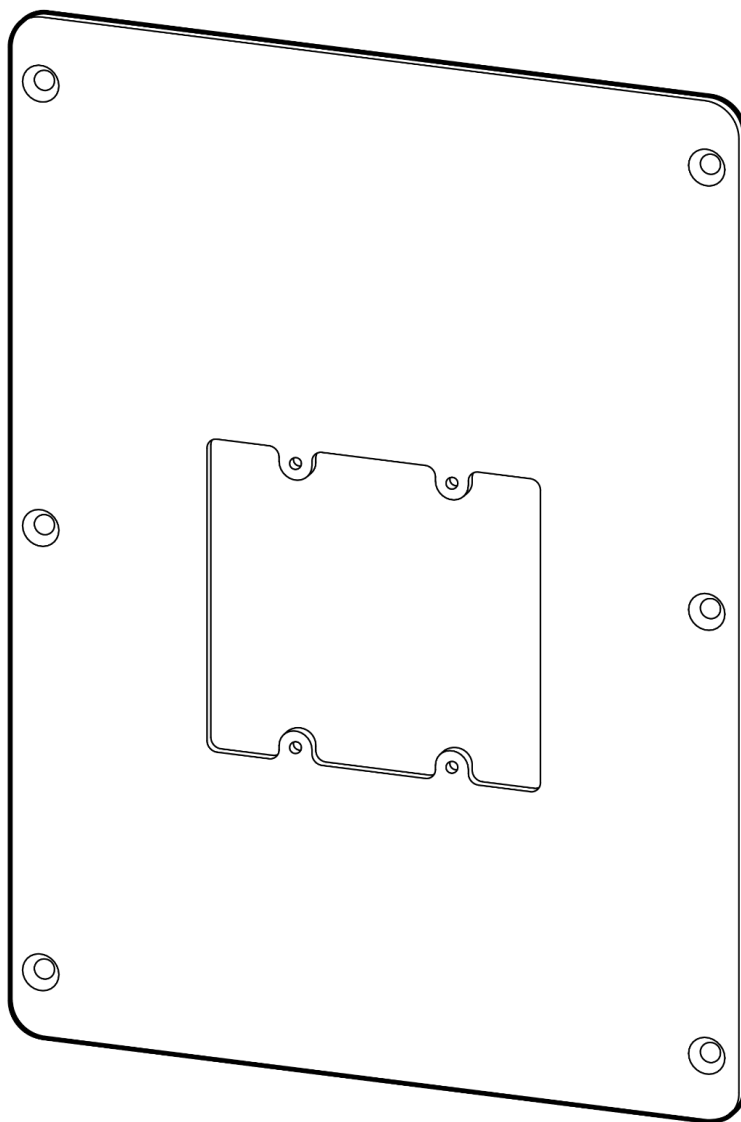


ACC-INT-PLATE-1

Intercom Emergency Adapter Plate



Document Details

Version

V1.0 20260108

(V1.0 published 20260108)

Firmware

Firmware version can be verified on Verkada Command
command.verkada.com.

Product Models

This install guide pertains to model ACC-INT-PLATE-1.

© Copyright 2025 Verkada Inc. All rights reserved.

Verkada and the Verkada logo are registered trademarks or service marks of Verkada Inc. ("Verkada"). All other trademarks are the property of their respective owners.

Verkada may make changes to this document at any time without notice. The information presented herein may be inaccurate or outdated, and Verkada is under no obligation to maintain it. ALL INFORMATION IS PROVIDED "AS-IS" AND WITHOUT ANY WARRANTIES, IMPLIED, EXPRESS, OR OTHERWISE. VERKADA DISCLAIMS LIABILITY FOR ALL DAMAGES, INCLUDING WITHOUT LIMITATION ANY DIRECT, INDIRECT, SPECIAL, INCIDENTAL, PUNITIVE, OR CONSEQUENTIAL DAMAGES, ARISING OUT OF USE OF THIS DOCUMENT.

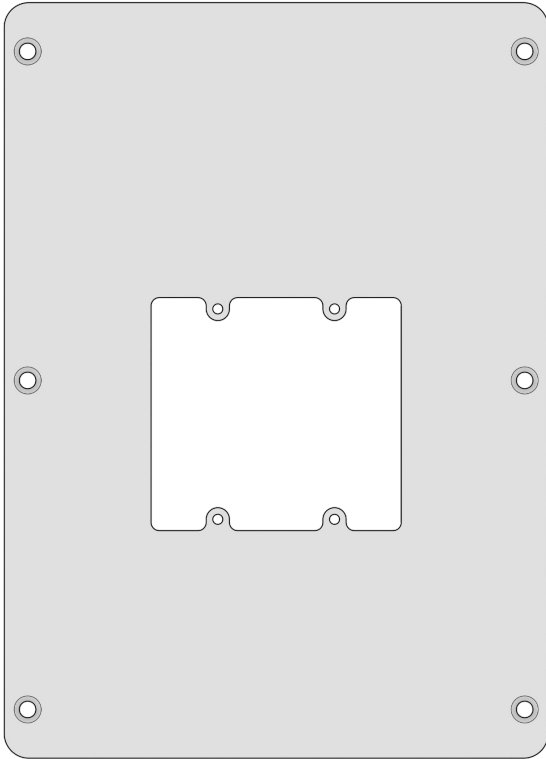
Any intellectual property rights relating to Verkada products are and shall remain Verkada's exclusive property. Use of any Verkada product is subject to Verkada's end user agreement or other executed agreement with Verkada. No license, either expressed or implied, to use or distribute any Verkada product is granted under this document.

This document may not be sold, resold, licensed or sublicensed and may not be transferred without Verkada's prior written consent. No part of this document may be reproduced in whole or in part without the express written consent of Verkada.

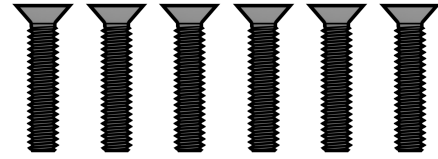


Introduction

What's in the Box

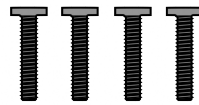


Intercom Emergency Adapter Plate



Tamper-Resistant Torx Flat Head Screw (6 pcs)
Length: 0.5" Drive: #2 Phillips

Mounting Hardware #1



Junction Box Screws
#8-32 (4 pcs)
Length: 0.5" Drive: #2 Phillips



Washers (4 pcs)

Mounting Hardware #2

What you'll need

- A compatible Verkada Intercom
- A #2 Phillips screwdriver or power drill with a #2 Phillips driver bit
- A Cat5 or Cat6 Ethernet cable with a 0.2-0.25 inch diameter (5-6.5mm)

Compatible Products

- TD53
- TS12-N
- TS12-N-RB
- TS12-N-R2B

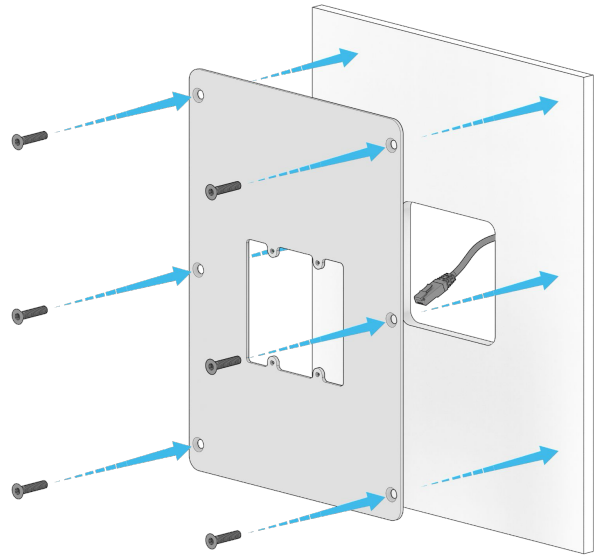
Placement

Use as adapter plate with blue light emergency poles.

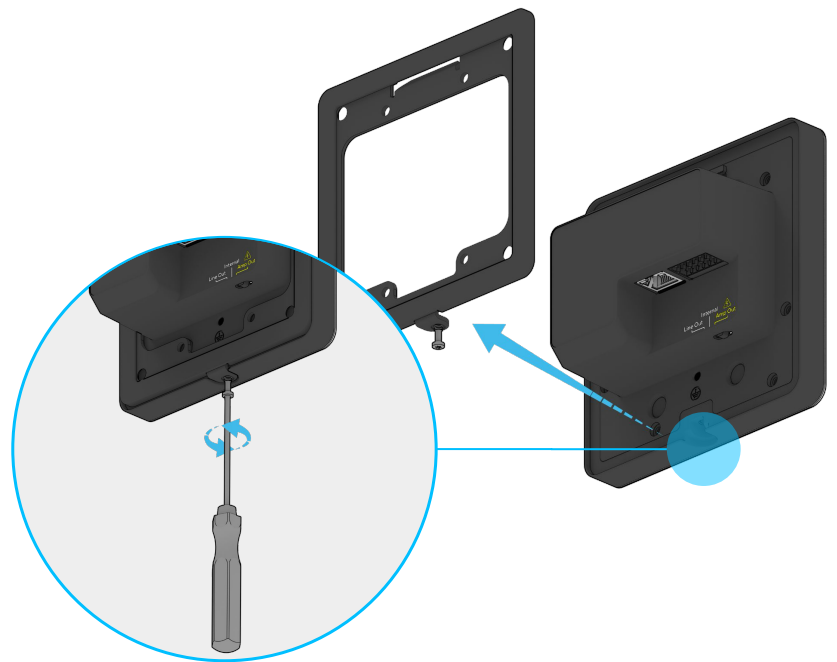
Installation

Mounting 1/3

Use T20 tamper-resistant flat head screws to fix the Adapter Plate on the surface.



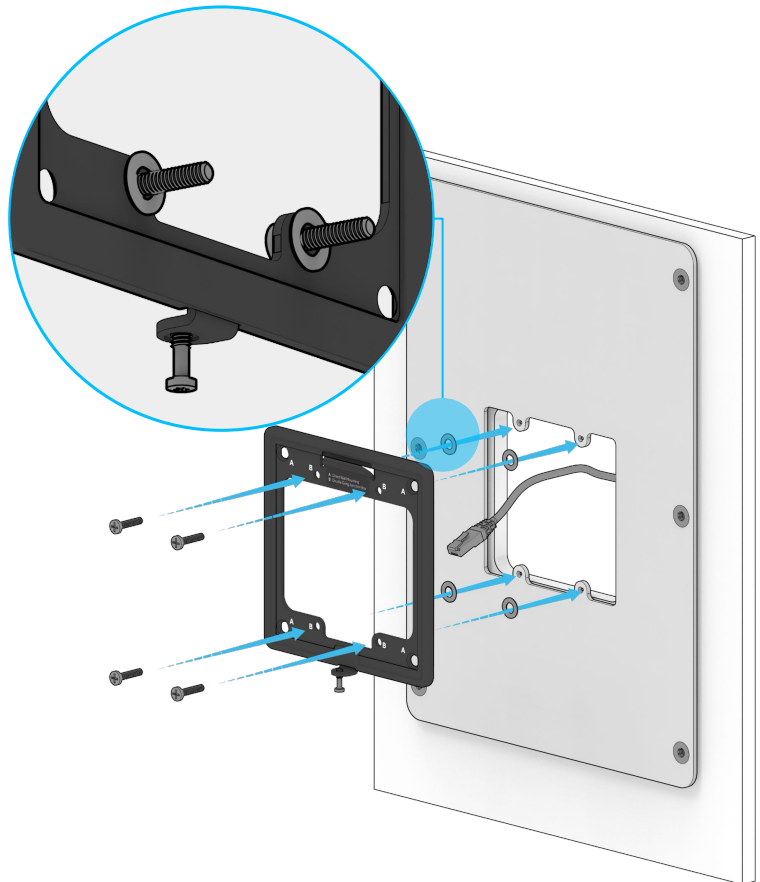
Loosen the security screw and remove the mount plate from device.



Mounting 2/3

Use the #8 screws and washer to secure the wall mount plate onto the Adapter Plate using the B hole pattern.

Note: The washer should be between Wall Mount Plate the Adapter Plate to create a waterproof surface seal.



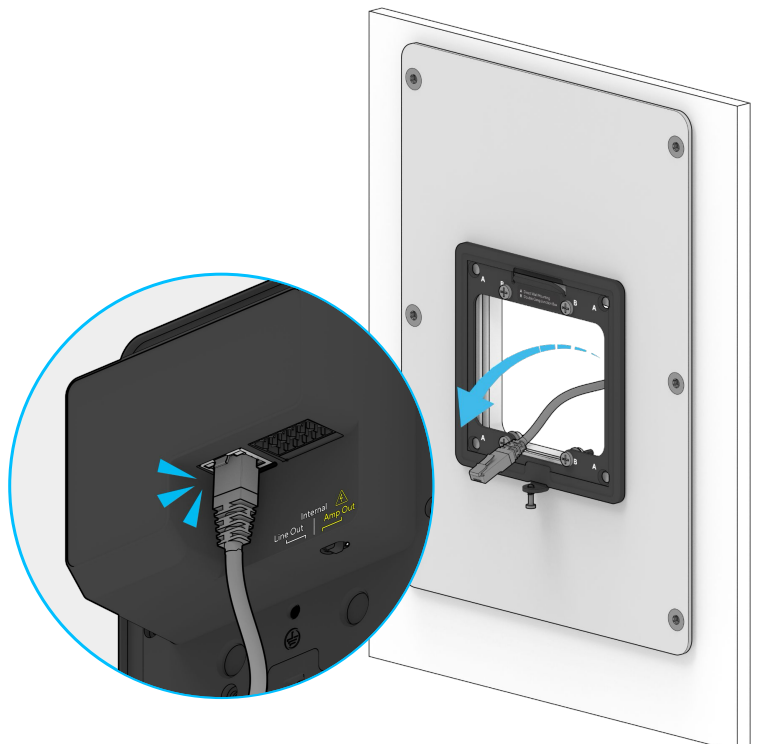
Route the ethernet cable through the mount plate and plug it into the device.

Connect the TS12 to your network using the Ethernet port located behind the cable door on the device.

For easy registration and setup, scan the QR code on the product.

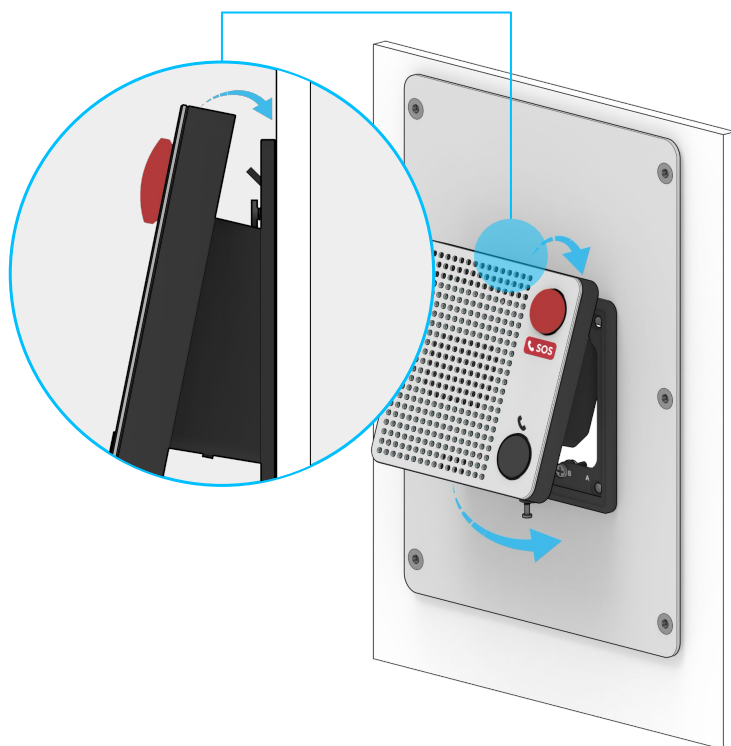
If you prefer to manually register your product, please proceed to:
verkada.com/start

Enter the serial number printed on the back of the device, the packaging, or the order number.



Mounting 3/3

Hook the device onto the mount plate.



Tighten the security screw with the T10 Torx Security Screwdriver.



Appendix

Support

Thank you for purchasing this Verkada product. If for any reason you're experiencing issues or need assistance, please contact our 24/7 Technical Support Team immediately.

Sincerely,
The Verkada Team
verkada.com/support

