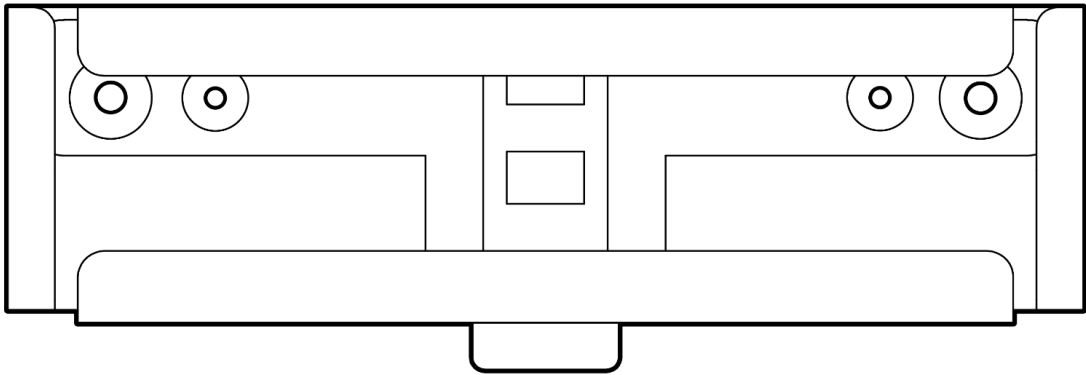


ACC-MNT-CLIP-1

Tile Clips



Document Details

v1.0 (20240223)

(v1.0 first published 20240223)

© Copyright 2024 Verkada Inc. All rights reserved.

Verkada and the Verkada logo are registered trademarks or service marks of Verkada Inc. (“Verkada”). All other trademarks are the property of their respective owners.

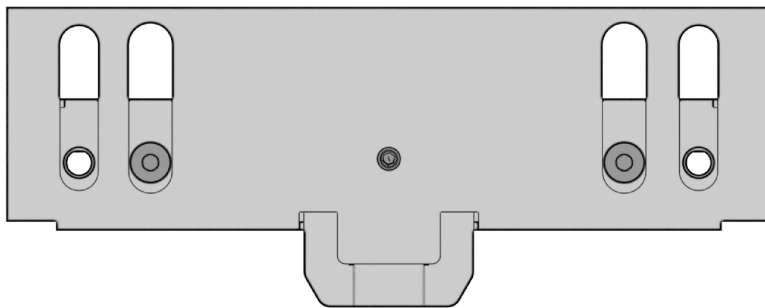
Verkada may make changes to this document at any time without notice. The information presented herein may be inaccurate or outdated, and Verkada is under no obligation to maintain it. ALL INFORMATION IS PROVIDED “AS-IS” AND WITHOUT ANY WARRANTIES, IMPLIED, EXPRESS, OR OTHERWISE. VERKADA DISCLAIMS LIABILITY FOR ALL DAMAGES, INCLUDING WITHOUT LIMITATION ANY DIRECT, INDIRECT, SPECIAL, INCIDENTAL, PUNITIVE, OR CONSEQUENTIAL DAMAGES, ARISING OUT OF USE OF THIS DOCUMENT.

Any intellectual property rights relating to Verkada products are and shall remain Verkada’s exclusive property. Use of any Verkada product is subject to Verkada’s end user agreement or other executed agreement with Verkada. No license, either expressed or implied, to use or distribute any Verkada product is granted under this document.

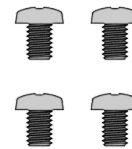
This document may not be sold, resold, licensed or sublicensed and may not be transferred without Verkada’s prior written consent. No part of this document may be reproduced in whole or in part without the express written consent of Verkada.



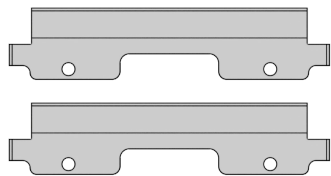
What's in the box



ACC-MNT-CLIP-1



M3X0.5 Machine Screw
(4 pcs)
Length: 4mm **Drive:** #2 Phillips



Square Tile
Add-ons (2 pcs)



Hex key (1 pcs)
1.5mm



M4X0.7 Machine Screw
(2 pcs)
Length: 8mm **Drive:** #2 Phillips

What you'll need

- A Compatible Verkada product
- A #2 Phillips screwdriver or a power drill with a #2 Phillips driver bit
- A 1/4" (6.35mm) drill bit for routing cable through ceiling
- Utility Knife

Compatible products

For a list of compatible products, please visit:
<https://docs.verkada.com/docs/accessories-overview.pdf>

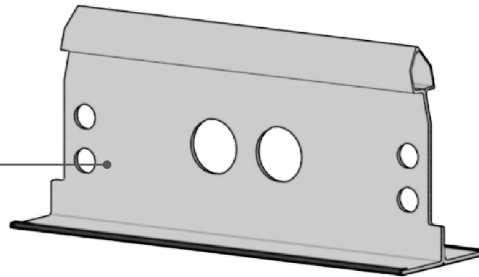


Overview

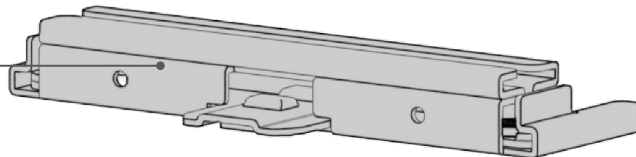
Order of assembly:

Ceiling tile frame

Designed for
9/16" or 15/16"
wide

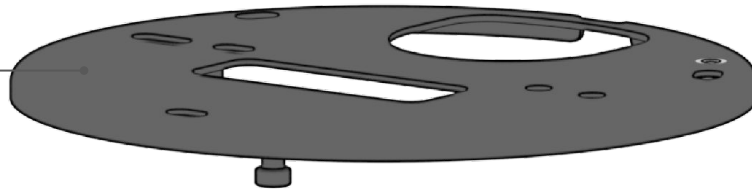


Tile Clip



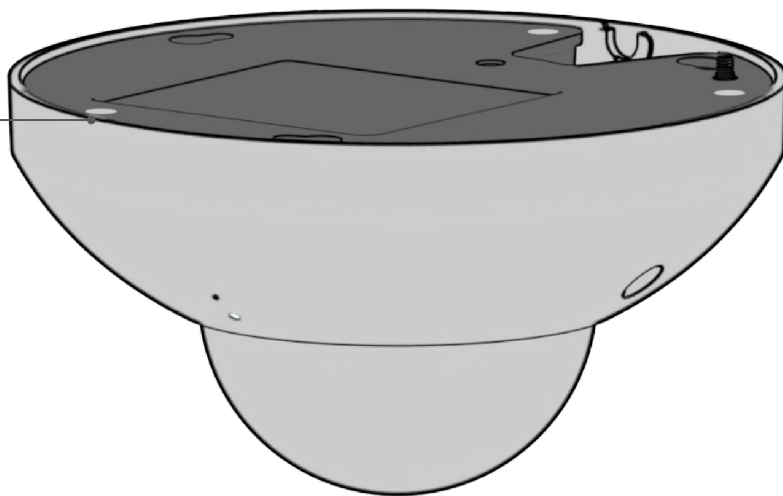
Mount plate

(Sold separately,
with camera)



Verkada Camera

(Sold separately)

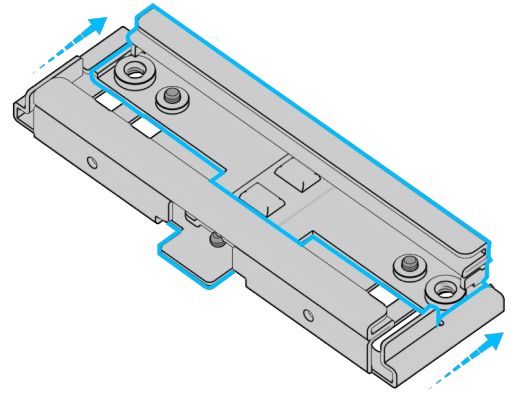


Installation

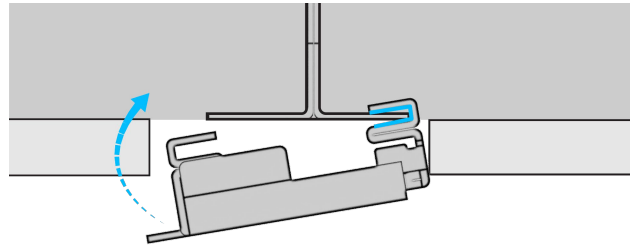
Mounting Tile Clip on T-shape Ceiling Frame

Note: ACC-MNT-CLIP-1 is compatible with 9/16" and 15/16" wide T-shape Ceiling Frames.

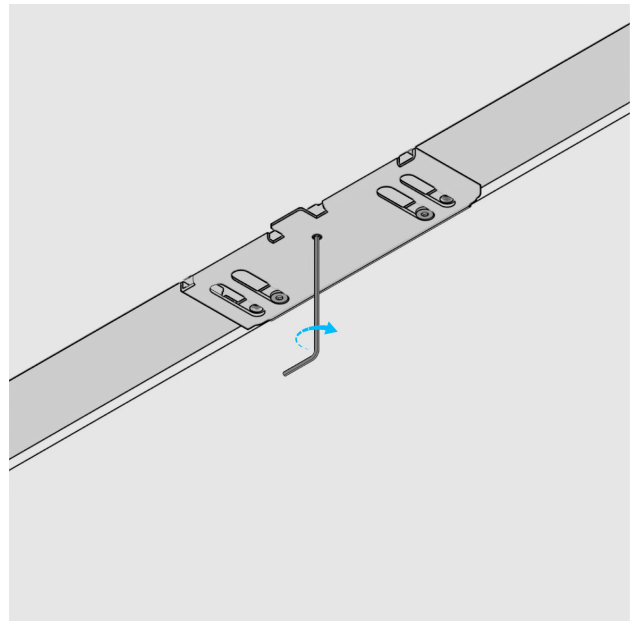
Extend the Tile Clip brackets to its maximum width.



Hook the Tile Clip onto both sides of the ceiling frame.



Secure the Tile Clip in place by tightening the set screw.

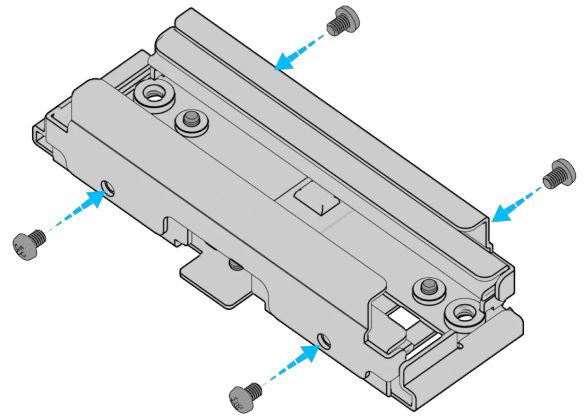


Installation

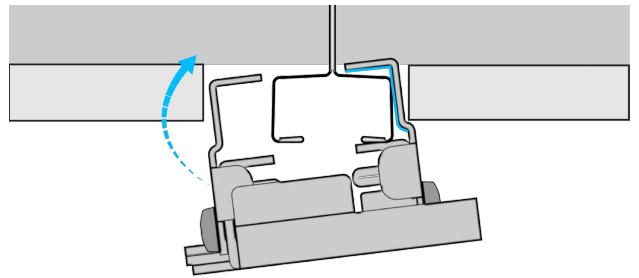
Mounting Tile Clip on Square Ceiling Frame

Note: The standard size square tile is 9/16" wide.

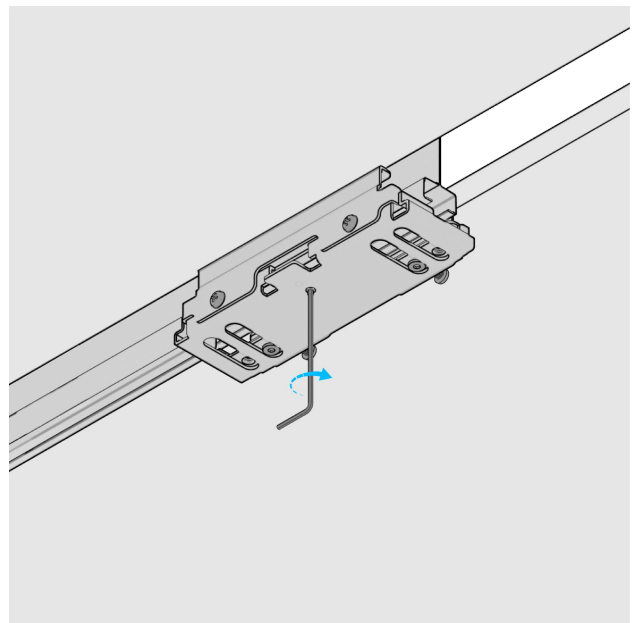
Attach the Square Tile add-ons onto the Tile Clip using the four M3x0.5 machine screws provided.



Hook the Tile Clip onto both sides of the ceiling frame.



Secure the Tile Clip in place by tightening the set screw in the center.



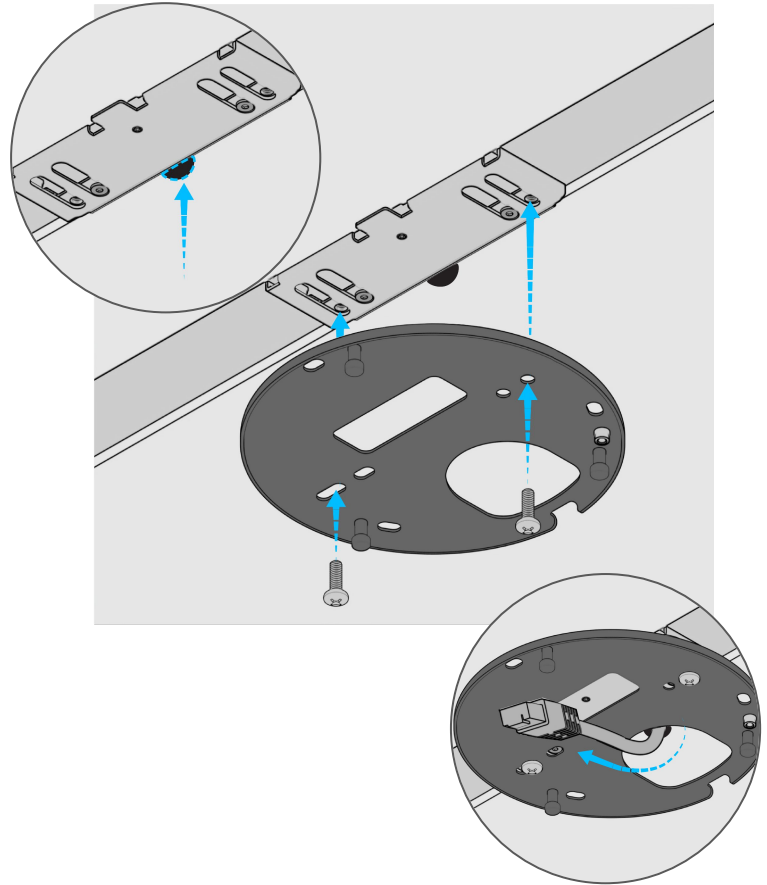
Installation

Mounting Camera on the Tile Clip

Retrieve the camera mount plate.

Cut or drill a hole at the edge of the ceiling tile for the Ethernet cable to pass through.

Attach the camera mount plate to the Tile Clip with the provided M4x0.7 machine screws by following the single gang junction box pattern.

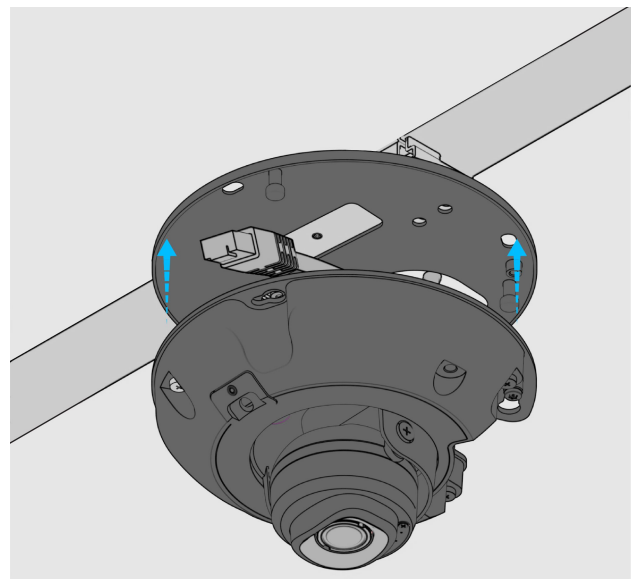


Connect the Ethernet cable to the camera.

Attach the camera to the mount plate.

After attaching the Verkada device to the mount, tighten the thumbscrews on the camera body and attach the outer shell.

Please see additional installation steps for the device you are mounting in its respective Install Guide



Appendix

Support

Thank you for purchasing this Verkada product. If for any reason you're experiencing issues or need assistance, please contact our 24/7 Technical Support Team immediately.

Sincerely,
The Verkada Team
verkada.com/support

