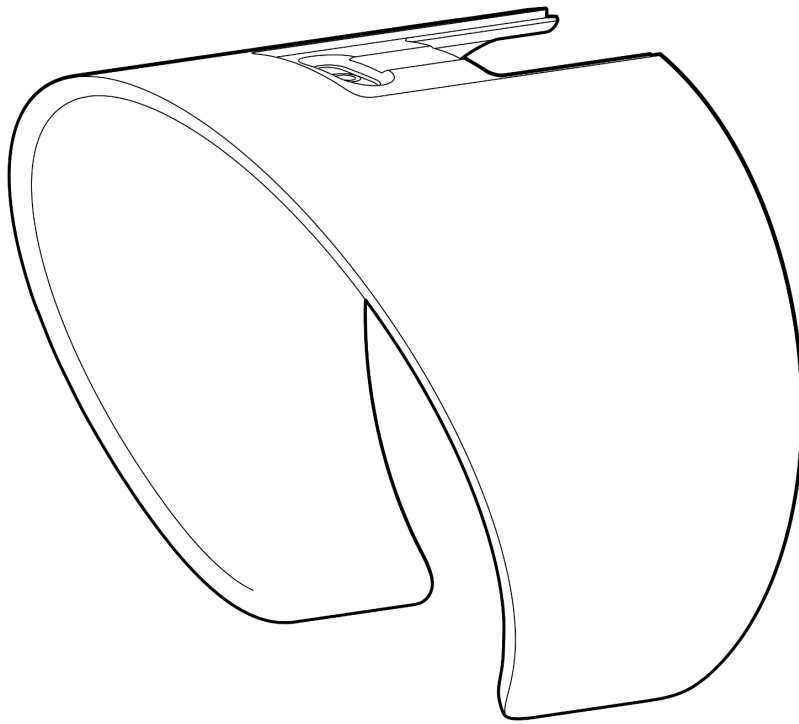


ACC-CAM-CB-VSR-1

Visor Extension for Bullet Camera



Document

Document Details

Version

V1.0 20260526

(V1.0 published 20260526)

Firmware

Firmware version can be verified on Verkada

Command command.verkada.com.

Product Models

This install guide pertains to models:

- ACC-CAM-CB-VSR-1

© Copyright 2026 Verkada Inc. All rights reserved.

Verkada and the Verkada logo are registered trademarks or service marks of Verkada Inc. ("Verkada"). All other trademarks are the property of their respective owners.

Verkada may make changes to this document at any time without notice. The information presented herein may be inaccurate or outdated, and Verkada is under no obligation to maintain it. ALL INFORMATION IS PROVIDED "AS-IS" AND WITHOUT ANY WARRANTIES, IMPLIED, EXPRESS, OR OTHERWISE. VERKADA DISCLAIMS LIABILITY FOR ALL DAMAGES, INCLUDING WITHOUT LIMITATION ANY DIRECT, INDIRECT, SPECIAL, INCIDENTAL, PUNITIVE, OR CONSEQUENTIAL DAMAGES, ARISING OUT OF USE OF THIS DOCUMENT.

Any intellectual property rights relating to Verkada products are and shall remain Verkada's exclusive property. Use of any Verkada product is subject to Verkada's end user agreement or other executed agreement with Verkada. No license, either expressed or implied, to use or distribute any Verkada product is granted under this document.

This document may not be sold, resold, licensed or sublicensed and may not be transferred without Verkada's prior written consent. No part of this document may be reproduced in whole or in part without the express written consent of Verkada.



What's in the Box



Visor Extension for Bullet Camera



TS10 Torx Security Screwdriver



M3 Machine Screw (Spare Part)
Length: 4.4mm Drive: TS10 Torx

What you'll need

- A compatible Verkada product
 - CB53-TE
 - CB63-TE

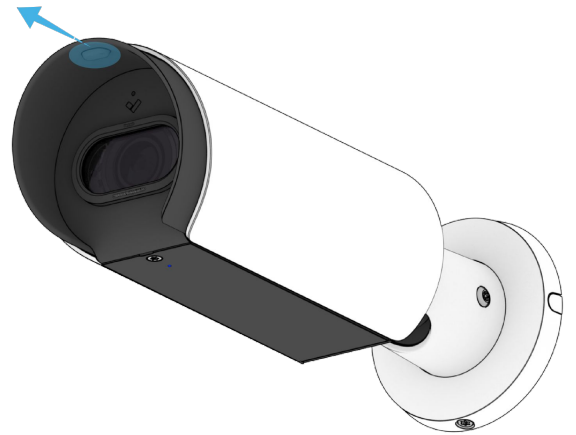
Compatible products

For a list of compatible products, please visit:
<https://docs.verkada.com/docs/accessories-overview.pdf>

Installation

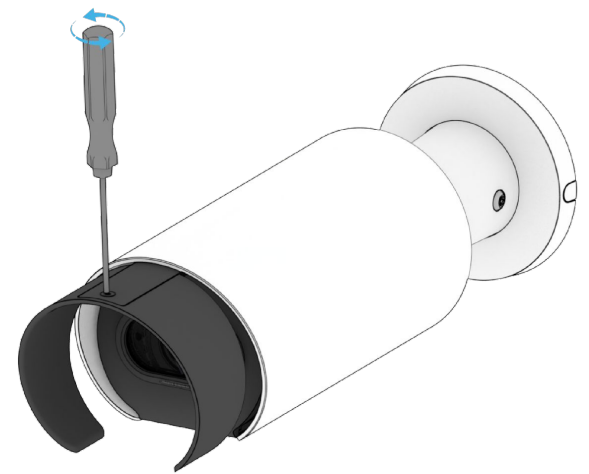
Mounting 1/2

Use the notch to pull out the visor all the way.



Use the included TS10 Torx Security Screwdriver to undo the screw holding the visor in place.

Set the screw aside.



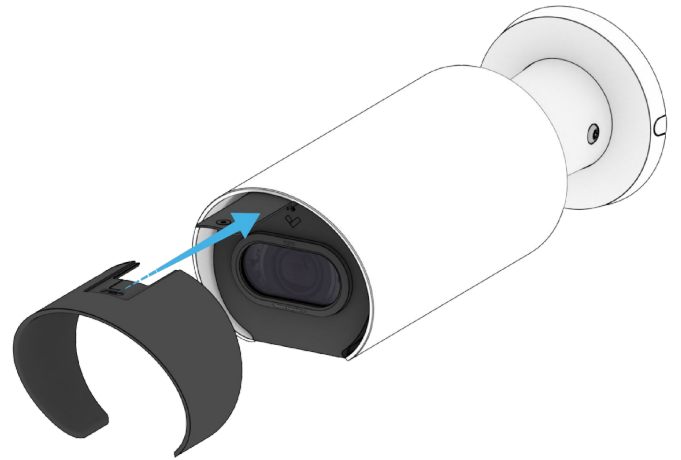
Remove the pre-installed visor.



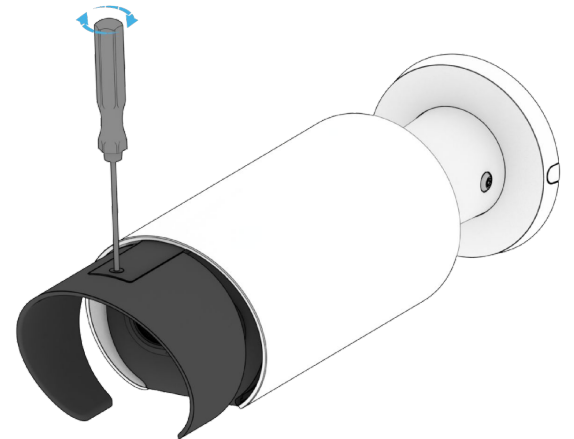
Installation

Mounting 2/2

Line the Visor Extension up with the Bullet Camera so the screw hole aligns with the visor bracket.

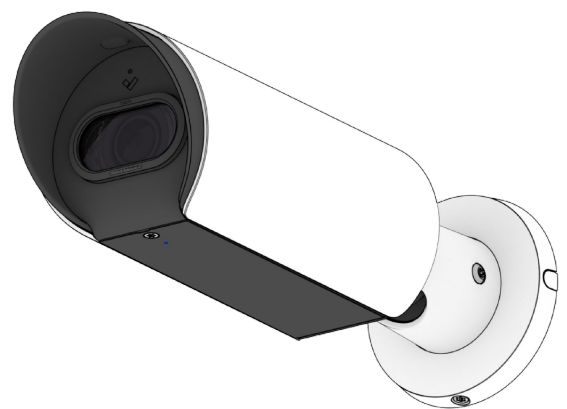


Use the included TS10 Torx Security Screwdriver and the screw to fasten the Visor Extension in place.



Installation is complete.

A spare screw is included in the Visor Extension packaging if needed.



Appendix

Support

Thank you for purchasing this Verkada product. If for any reason you're experiencing issues or need assistance, please contact our 24/7 Technical Support Team immediately.

Sincerely,
The Verkada Team
verkada.com/support

