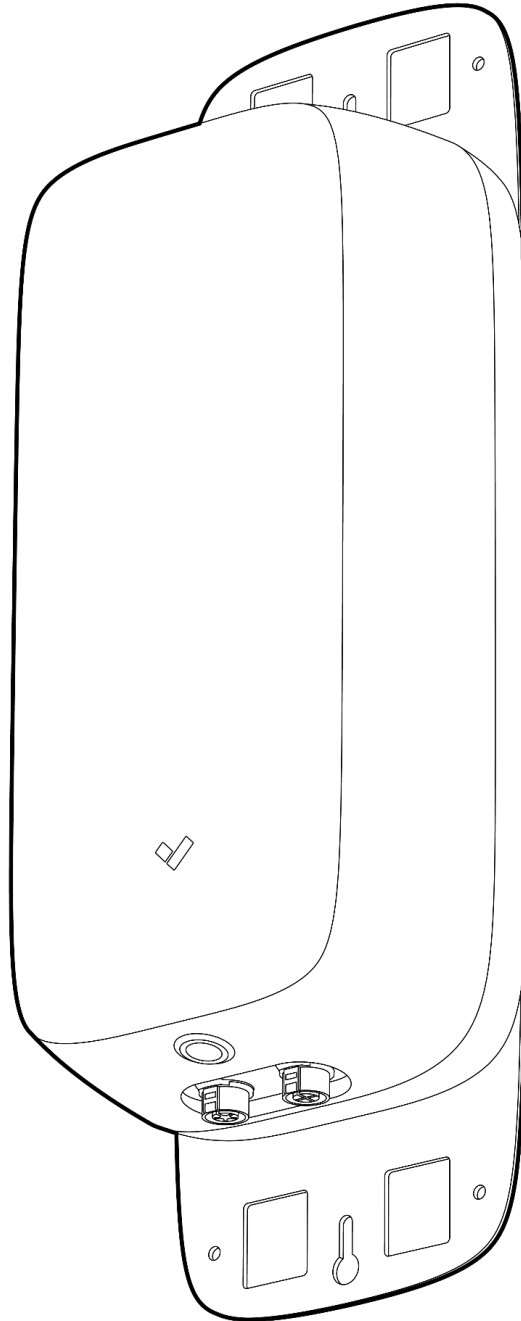


ACC-BAT-430WH-E-1

430Wh External Battery for CR Camera



Document Details

Version

V1.0 20251222

(V1.0 published 20251222)

Firmware

Firmware version can be verified on Verkada Command
command.verkada.com.

Product Models

This install guide pertains to model ACC-BAT-430WH-E-1.

© Copyright 2025 Verkada Inc. All rights reserved.

Verkada and the Verkada logo are registered trademarks or service marks of Verkada Inc. ("Verkada"). All other trademarks are the property of their respective owners.

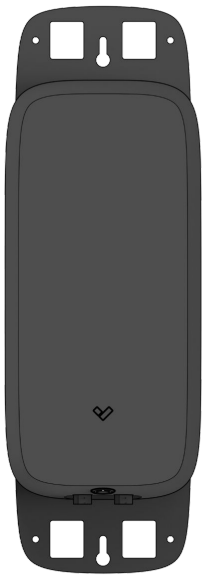
Verkada may make changes to this document at any time without notice. The information presented herein may be inaccurate or outdated, and Verkada is under no obligation to maintain it. ALL INFORMATION IS PROVIDED "AS-IS" AND WITHOUT ANY WARRANTIES, IMPLIED, EXPRESS, OR OTHERWISE. VERKADA DISCLAIMS LIABILITY FOR ALL DAMAGES, INCLUDING WITHOUT LIMITATION ANY DIRECT, INDIRECT, SPECIAL, INCIDENTAL, PUNITIVE, OR CONSEQUENTIAL DAMAGES, ARISING OUT OF USE OF THIS DOCUMENT.

Any intellectual property rights relating to Verkada products are and shall remain Verkada's exclusive property. Use of any Verkada product is subject to Verkada's end user agreement or other executed agreement with Verkada. No license, either expressed or implied, to use or distribute any Verkada product is granted under this document.

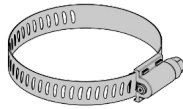
This document may not be sold, resold, licensed or sublicensed and may not be transferred without Verkada's prior written consent. No part of this document may be reproduced in whole or in part without the express written consent of Verkada.



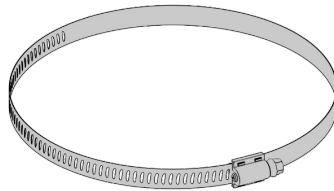
What's in the Box



External Battery



Small Pole Straps (2 pcs)
For Pole Diameter: 48-107mm (1.89-4.21")
Drive: #2 Phillips



Large Pole Straps (2 pcs)
For Pole Diameter: 83-178mm (3.27-7")
Drive: #2 Phillips



M6 Machine Screws (4 pcs)
Length: 16mm Drive: 5mm Hex



M6 Flat Washers (4 pcs)



M6 Spring Washers (4 pcs)



Hex Key
Size: 5mm



M12-4P to M12-6P Cable
Length: 2m

What you'll need

- A Verkada CR63-E device and accessories
- A smartphone or laptop
- A #2 Phillips screwdriver or power drill with a #2 Phillips driver bit for direct pole mounting.

Connect

For easy registration and setup, scan the QR code on the product.

If you prefer to manually register your product, please proceed to:

verkada.com/start

Overview



- **Solid Orange**
Battery is on and booting up.
- ☀ **Slow Flashing Orange**
Battery is updating firmware.
- **Solid White**
Battery is charging and not connected to a device.
- ⚙ **Fast Flashing White (Blink x2 followed by a pause)**
Battery is discharging and not connected to a device.
- **Solid Blue**
Battery is charging and connect to a device.
- ☀ **Fast Flashing Blue (Blink x2 followed by a pause)**
Camera is discharging and recording, but is not connected.
- **Solid Red**
Battery fault, needs to be power cycled.

Introduction

Connecting Device

Note: This step can be done after mounting, although registering and charging the product first will ensure it is in working order prior to mounting.

For easy registration and setup, scan the QR code on the product. The QR code and serial number are printed on the label on the back of the product.

Press the power button to turn the device battery on.



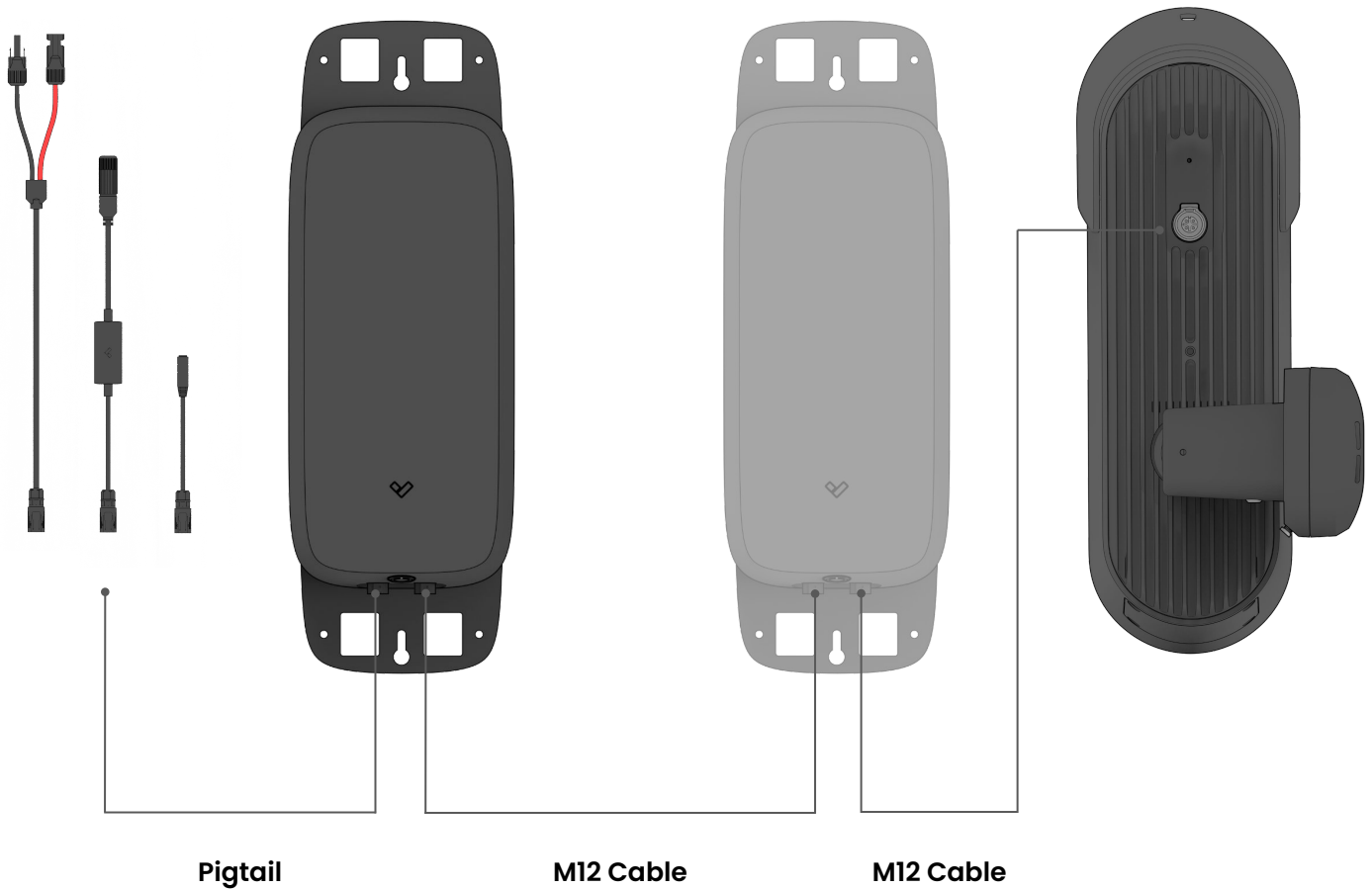
If the device battery is low or depleted during setup, connect a CR63-E PoE or DC power cable to the input connector to charge the device.

It is recommended to charge the device to 100% battery before deploying for the best experience.



Overview

For Daisy-chain setup
Optional



Wiring with a single External Battery

Use the cable provided with the External Battery to connect its M12 output to the CR63-E M12 input.

The External Battery should receive power from either a solar panel, a passive PoE input, or a barrel jack connector using one of the M12 pigtails provided with CR63-E.

Wiring for Daisy-chain Setup

Multiple External Batteries can be daisy-chained to increase battery life of CR63-E.

Use the provided cable to connect the first battery's M12 output into the M12 input of the next battery.

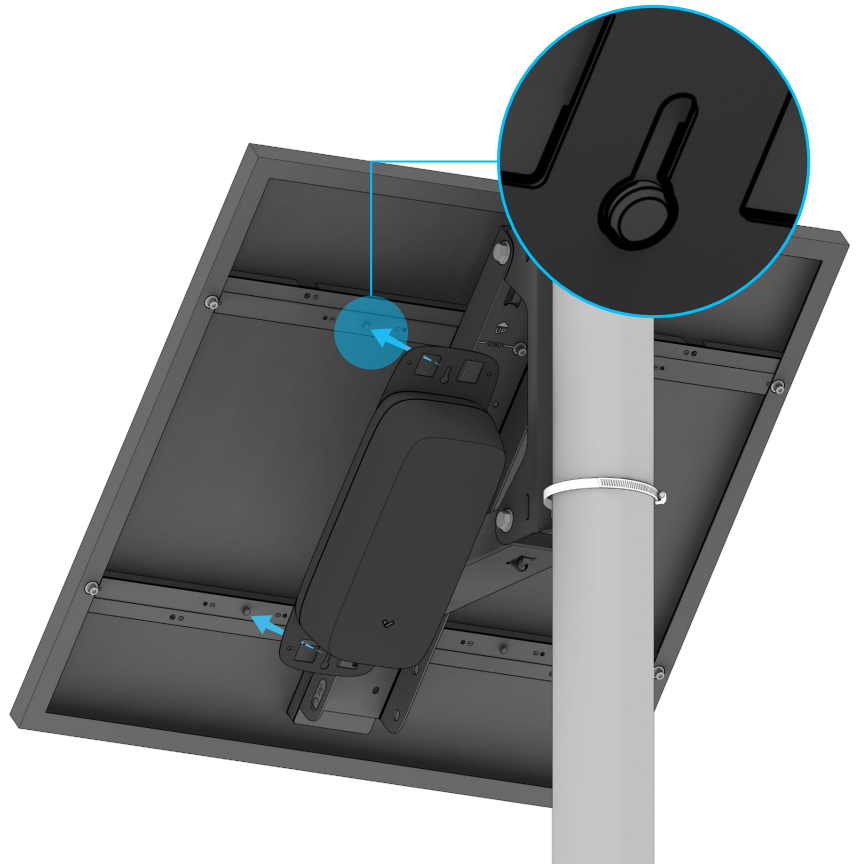
The M12 output connector of the last External Battery will connect to the M12 input of the CR63-E.

Installation

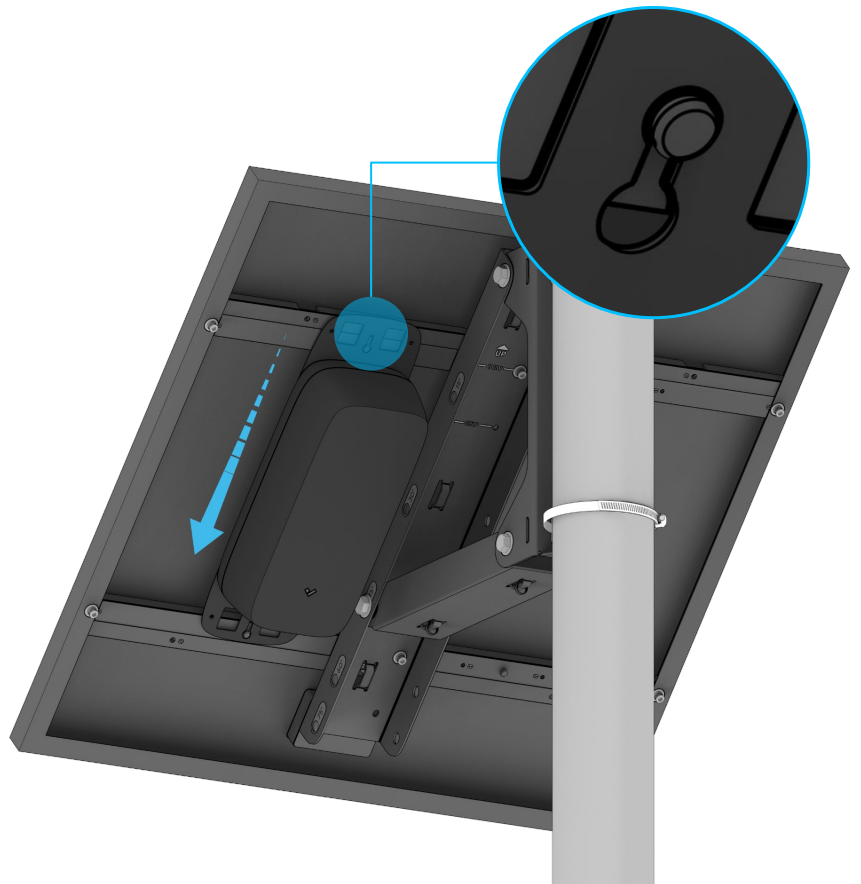
Solar Panel Mounting

Fully assemble the ACC-MNT-SOLP-1 Solar Panel Mount according to the installation instructions.

Use the two keyhole features to hang the battery extender from the solar panel mount.



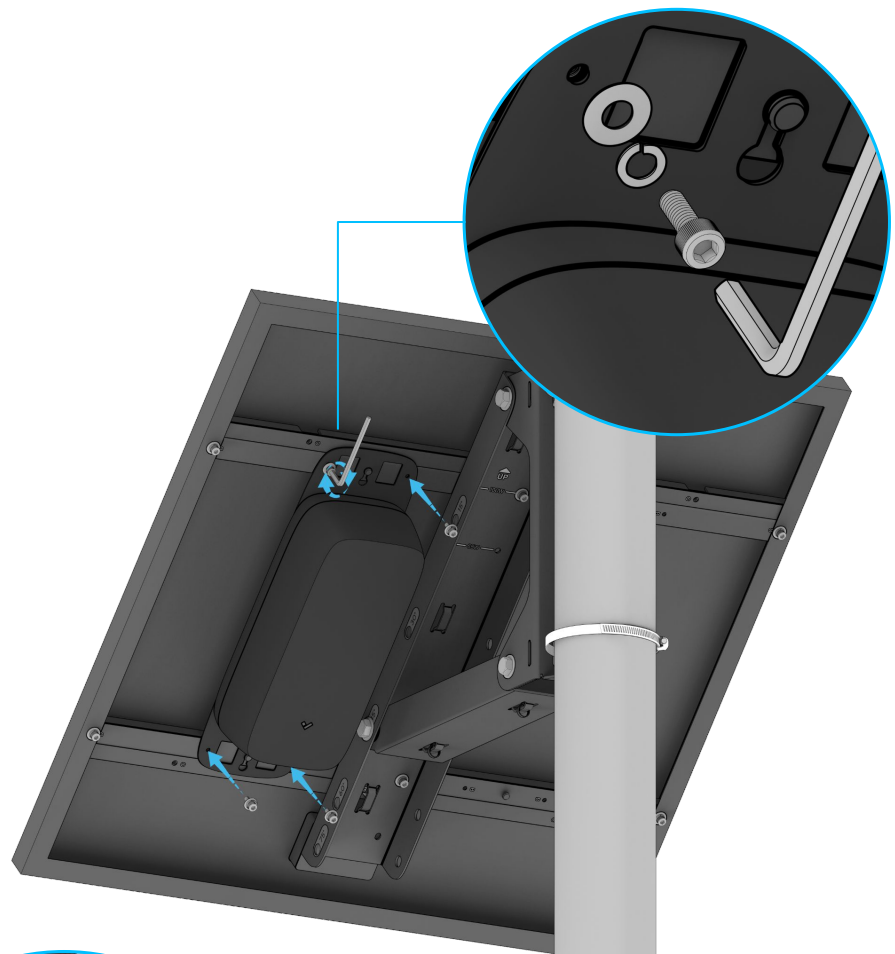
Slide down the battery module to lock it in place.



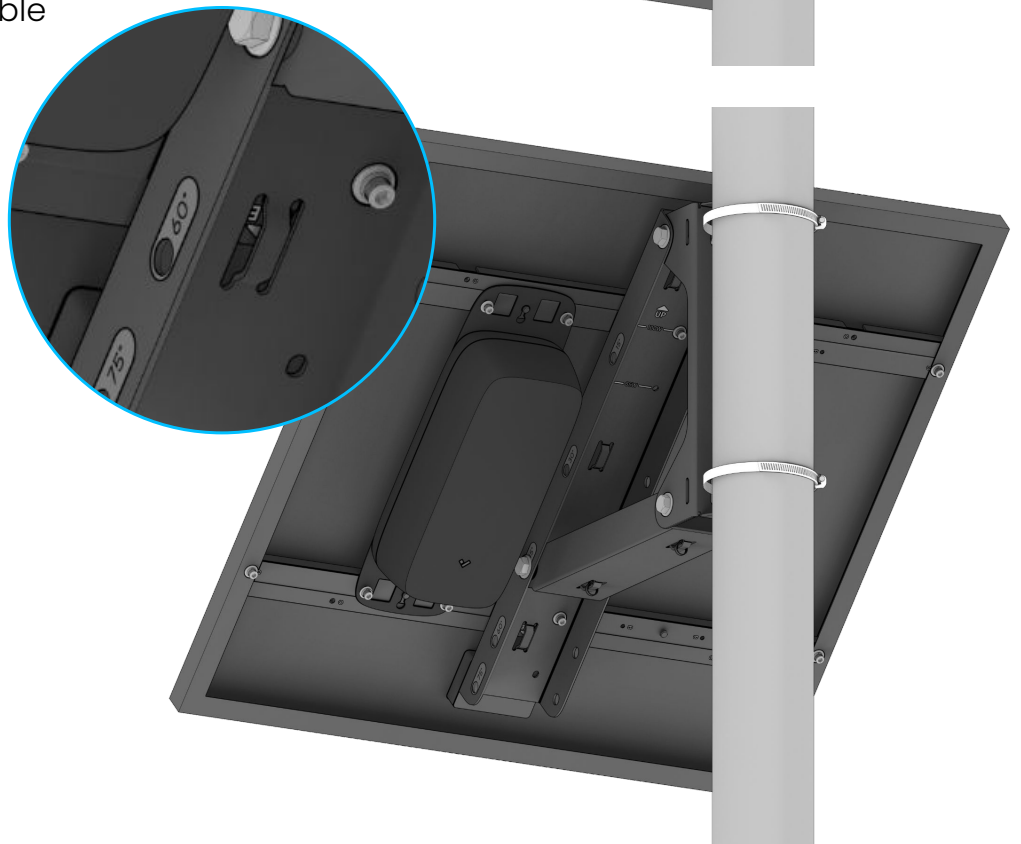
Installation

Solar Panel Mounting

Secure the battery extender to the solar panel mount using the four provided M6 fasteners, spring washers, and flat washers.



Use the cable tie slots for cable organization.



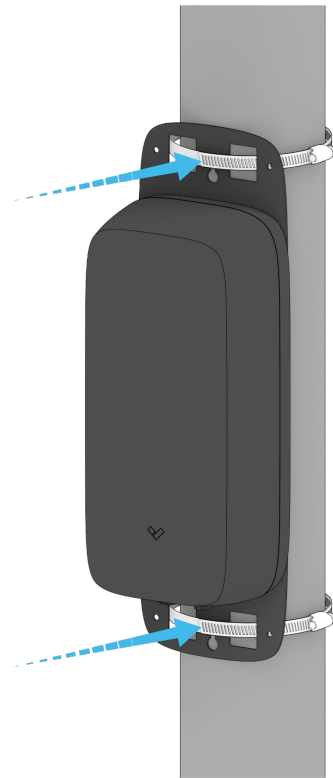
Installation

Direct Pole Mounting

Hold the device in the desired position on the pole.

For optimal performance, mount the device in a location that minimizes direct exposure to sunlight.

Route the pole straps through the pole strap openings and around the pole.



Tighten with a #2 Phillips head screwdriver or drill bit to secure to the pole.



Appendix

Support

Thank you for purchasing this Verkada product. If for any reason you're experiencing issues or need assistance, please contact our 24/7 Technical Support Team immediately.

Sincerely,
The Verkada Team
verkada.com/support

