

# The AF64 Early Access Program



## Meet the AF64 Access Station Pro

The AF64 is an all-in-one device that combines a single-door controller, multi-technology reader, 5.5" touchscreen, and 5MP wide-angle camera in a sleek form factor. The built-in camera provides rich visual context and analytics while powering our latest access method: **Face Unlock**. With Face Unlock, users can be securely authenticated in under a second – no badge, phone, or PIN required. The AF64 also supports the full range of Verkada credentials, including keycards, fobs, mobile (NFC and Bluetooth Intent Unlock), PIN codes, and configurable multi-factor options like face plus badge or PIN. The AF64 offers flexible, scalable enrollment options, installs easily via a PoE cable, and includes multiple mounting options and accessories.

## About the early access program

As of February 2026, the AF64 is available in early access. Through this offer, customers and partners can trial the AF64 for an extended trial period of up to 60 days, with the opportunity to extend the trial period further until the product is generally available for purchase.

After the trial period, organizations can opt to return their trial units or convert their trial to a purchase, with standard hardware and software pricing applying (see [the datasheet](#) for more details). [Trial terms apply](#).

This program is available for customers and partners located in the US, Canada, UK, Australia, and New Zealand. Units are limited, so contact your sales representative for more information if interested.

## What's included in early access

The early access program includes:

- Brand new AF64 unit(s)
- Includes a surface mount, with optional up angle, side angle, and mullion mounts
- Full access to Verkada Command, our cloud-based management platform
- Free setup support, US, UK and Australia-based technical support
- Free shipping both ways

## FAQ

### Where can I go to learn more about the AF64?

Please see [our website](#) and [datasheet](#) for more information on the AF64 and technical specifications.

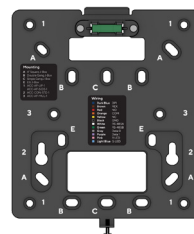
### How many AF64 devices can I trial at once?

Organizations can trial multiple AF64s at once, subject to availability.

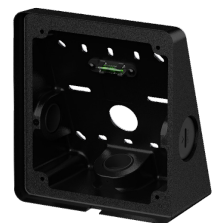
### What mounting accessories should I include, if any?

The optimal mounting height for Face Unlock is 60" (1.5m) off the ground. If you plan to install the AF64 at 60" flat on the wall or on a junction box, use the surface mount plate included in the box.

- For lower height installations (44-48"), use the 20 degree up angle mount.
- For installations where the device needs to be angled to be aligned to the pathway of people approaching the door, use the 35 degree side angle mount.
- The mullion mount is designed for mounting on either side of a mullion door frame and can be combined with the up angle or side angle mounts.



**Surface mount**  
(Included with AF64)



**Up angle mount**  
ACC-AF-UP-1



**Side angle mount**  
ACC-AF-SIDE-1



**Mullion mount**  
ACC-AF-MUL-1