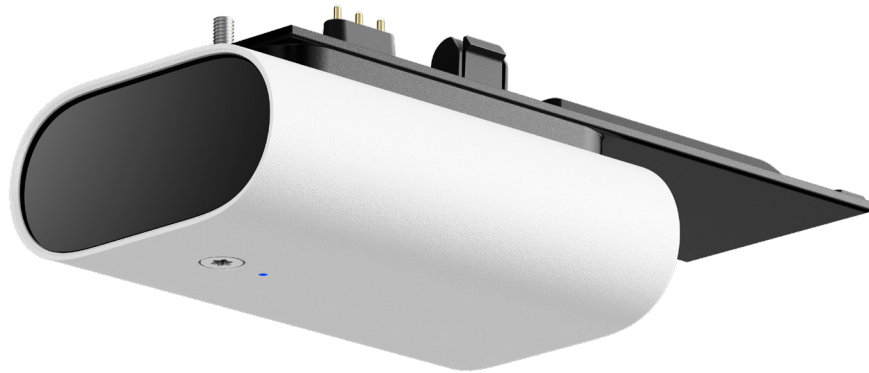


ACC-CAM-CB-IR-1

IR illuminator for 4K bullet camera



Overview

The ACC-CAM-CB-IR-1 is an external infrared (IR) illuminator that can be attached to the CB63-E and CB63-TE bullet cameras and managed within Command. At maximum intensity, this device extends the IR range of the CB63-E bullet camera from 50m / 164ft to 75m / 246ft, and the IR range of the CB63-TE telephoto bullet camera from 100m / 328ft to 150m / 492ft. This additional range allows the bullet camera to capture detail at longer distances in low-light conditions, optimizing nighttime performance when the camera is optically zoomed in.

The ACC-CAM-CB-IR-1 connects to the underside of the CB63-E and CB63-TE models using the built-in attachment interface. The illuminator is powered by the camera itself, which must receive PoE++ (IEEE 802.3bt Type 3) for the attachment to function.



ACC-CAM-CB-IR-1

Tech specs

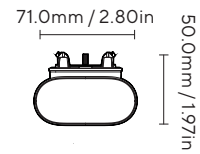
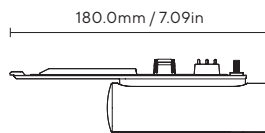
General

IR range	75m / 246ft with CB63-E 150m / 492ft with CB63-TE	Warranty	10 years
Box dimensions	L: 220.0mm / 8.66in W: 114.0mm / 4.49in H: 61.0mm / 2.40in	Box weight	600g / 21.16oz
Included accessories	T25 security Torx L-key		

Mechanical

Weight	440g / 15.52oz	Material	Aluminum
Dimensions	L: 180.0mm / 7.09in W: 71.0mm / 2.80in H: 50.0mm / 1.97in		

Dimensions



Power

Power input	IEEE 802.3bt Type 3 PoE++ (powered by CB63-E or CB63-TE)	Power consumption	Attachment: 43-57V, 0.81-0.61A, 34.8W Attachment (including camera): 43-57V, 0.81-0.61A, 34.8W Extended temperature range (including camera): 43-57V, 1.14-0.86A, 49.0W
--------------------	---	--------------------------	---



Ordering information

ACC-CAM-CB-IR-1 pricing

Model number	Description	Cost (MSRP) USD
ACC-CAM-CB-IR-1	IR illuminator for bullet camera ¹	\$349

1. The ACC-CAM-CB-IR-1 is only compatible with the CB63-E and CB63-TE.